

MODEL 119

**Application**

- Full Mortise
- Handed

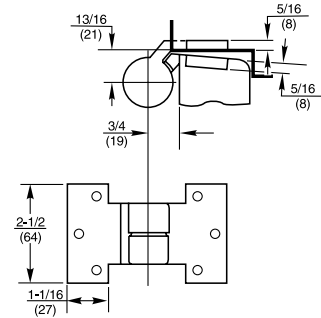


ANSI/C07382

**Product Description & Features**

- Not load-bearing
- Maintains door alignment
- Available 3/4" (19mm) offset only
- Non-ferrous base material
- Doors 60" (1524mm) to 90" (2286mm) in height should use one intermediate pivot. Each additional 30" (762mm) of door height warrants another intermediate pivot
- Door edges must be beveled in 1/8" in 2"
- Used with 117, 117-1/4, 195 pivot sets and 127 and 427 floor closers
- Furnished with wood and machine screws

**Technical Information**



MODEL M19

**Application**

- Full Mortise
- Handed

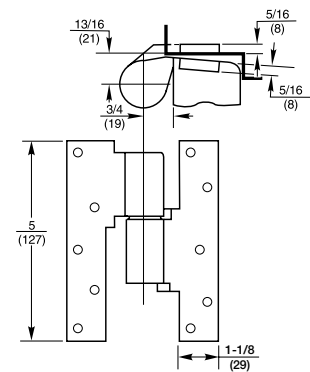


ANSI/C07321/C07371

**Product Description & Features**

- Not load-bearing
- Maintains door alignment
- Aids in installing floor closers and bottom pivots
- For 20-minute label suffix "-20" to the part number
- Non-ferrous base metal
- 3/4" (19mm) offset
- Available for 1-1/2" (38mm) offset
- Available for fire door assemblies (ferrous material) – specify FM19
- Doors 60" (1524mm) to 90" (2286mm) in height should use one intermediate pivot. Each additional 30" (762mm) warrants another intermediate pivot
- Door edges must be beveled in 1/8" in 2"
- Furnished with wood and machine screws

**Technical Information**



MODEL M190

**Application**

- Heavy-Duty Full Mortise
- Handed



ANSI/C07321/C07371

**Product Description & Features**

Used when frame condition does not allow standard top pivot

- Lateral load-bearing
- Maintains door alignment
- Aids in installing floor closers and bottom pivots
- Heavy-duty needle bearing
- Non-ferrous base metal
- 3/4" (19mm) offset standard
- Available for 1-1/2" (38mm) offset
- Available for fire door assemblies (ferrous material) – specify FM190
- For 20-minute label suffix "-20" to part number
- Doors 60" (1524mm) to 90" (2286mm) in height should use one intermediate pivot. Each additional 30" (762mm) warrants another intermediate pivot
- Door edges must be beveled in 1/8" in 2"
- Furnished with wood and machine screws

**Technical Information**

