

# ELECTROMAGNETIC DOOR HOLDER/RELEASES FLOOR MOUNTED

## MODEL 980

### Application

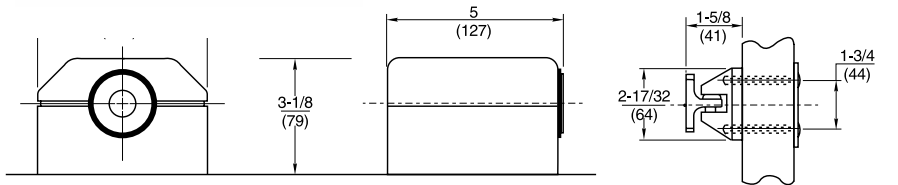
- Floor Mount
- Single Door
- ANSI/C00021

### Product Description & Features

- Concealed Wiring
- Total Floor Space Required: 6-5/8" (168mm)
- Mounting Requirements: Conduit connects directly to floor plate

### Technical Information

- Voltage and Current:
  - 120VAC, 60 Hz., .020 amp
  - 24VAC/DC, 60 Hz., .020 amp
  - 12VDC, .040 amp
- For 50-55 lbs. of holding force, specify voltage
  - 120VAC, 60Hz .017 amp
  - 24VAC, 60Hz .080 amp
  - 24VDC, .068amp
  - 12VDC, .180amp
  - 240VAC, 50/60Hz. .009 amp
- Shipping Weight: 4 lbs. (1.8 kg)



## MODEL 981

### Application

- Floor Mount
- 2 Back-to-Back Doors
- ANSI/C00031

### Product Description & Features

- Concealed Wiring
- Floor Space Required: 8-1/4" (210mm)
- Mounting Requirements: Conduit connects directly to floor plate

### Technical Information

- Voltage and Current:
  - 120VAC, 60Hz., .040 amp
  - 24VAC/DC, .040 amp
  - 12VDC, .080 amp
- For 50-55 lbs. of holding force, specify voltage
  - 120VAC, 60Hz .034 amp
  - 24VAC, 60Hz .016 amp
  - 24VDC, .036 amp
  - 12VDC, .360 amp
  - 240VAC, 50/60Hz. .018 amp
- Shipping Weight: 4-3/4 lbs. (2.2 kg)

