

ELECTROMAGNETIC DOOR HOLDER/RELEASES FLOOR MOUNTED

MODEL 980

Application

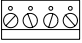
- Floor Mount
- Single Door
- ANSI/C00021

Product Description & Features

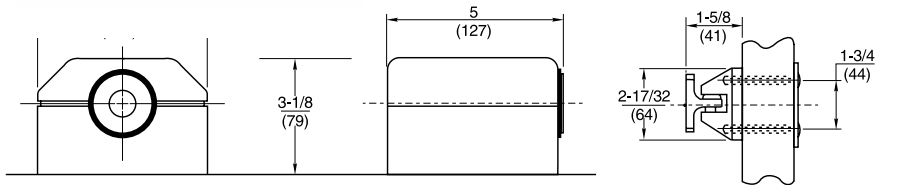
- Concealed Wiring
- Total Floor Space Required: 6-5/8" (168mm)
- Mounting Requirements: Conduit connects directly to floor plate

Technical Information

- Voltage and Current:

120VAC, 60 Hz., .020 amp	} 
24VAC/DC, 60 Hz., .020 amp	
12VDC, .040 amp	
- For 50-55 lbs. of holding force, specify voltage

120VAC, 60Hz .017 amp
24VAC, 60Hz .080 amp
24VDC, .068amp
12VDC, .180amp
240VAC, 50/60Hz. .009 amp
- Shipping Weight: 4 lbs. (1.8 kg)



MODEL 981

Application

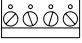
- Floor Mount
- 2 Back-to-Back Doors
- ANSI/C00031

Product Description & Features

- Concealed Wiring
- Floor Space Required: 8-1/4" (210mm)
- Mounting Requirements: Conduit connects directly to floor plate

Technical Information

- Voltage and Current:

120VAC, 60Hz., .040 amp	} 
24VAC/DC, .040 amp	
12VDC, .080 amp	
- For 50-55 lbs. of holding force, specify voltage

120VAC, 60Hz .034 amp
24VAC, 60Hz .016 amp
24VDC, .036 amp
12VDC, .360 amp
240VAC, 50/60Hz. .018 amp
- Shipping Weight: 4-3/4 lbs. (2.2 kg)

