

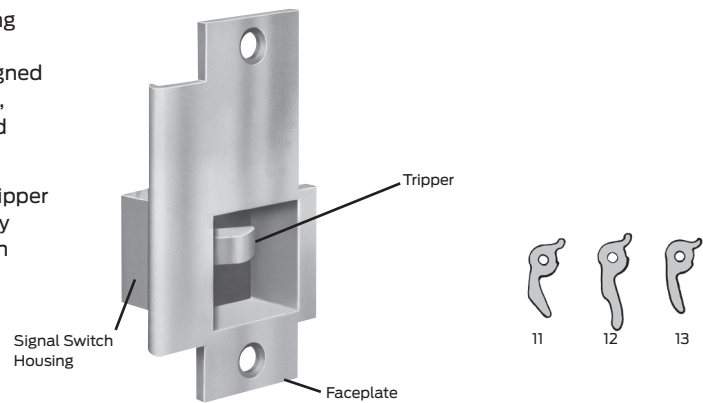
Monitor strikes

Monitor strikes are designed to offer remote door monitoring through the use of a signal switch mounted in the strike to monitor the latch bolt. This series of monitor strikes is designed for use with Von Duprin and most other manufacturers' rim, mortise, surface and concealed vertical rod exit devices and cylindrical, mortise and unit type locks.

The monitor strike replaces the standard door strike. The tripper in the monitor strike is depressed when the latch bolt is fully inserted in the strike. The stainless steel tripper activates an electric switch.

Features and benefits

UL listed as "miscellaneous door accessory"



Monitor strike electrical rating

SPDT Switch (single pole double throw): 24VDC @ 2 Amps (resistive)

Note: Tripper selection is based on the throw and shape of the latch bolt.

Series 4263, 4268-T1, 4582



Model specifications			
Model #	4263	4268-T1	4582
Lockset	Rim or surface vertical rod exit devices	Rim fire exit devices	Mortise or cylindrical locks
# Doors	Single or pair	Single or pair	Single or pair
Compatibility (with tripper type)	Von Duprin 22, T3 2227, T1 33A/35A, T3 3327A/3527A, T3 44, T1 55, T1 88, T1 8827, T1 98/99, T3 9827/9927, T1 Monarch Rim, T3 (³ / ₄ " [19mm] throw) Yale® 1500, T1 (⁵ / ₈ " [16mm] throw)	Von Duprin 22/22-F 33A/35A 88/88-F 98/99 98-F/99-F	Schlage ³ / ₄ " (19mm) Cyl., T2 L90, T2 Falcon ⁵ / ₈ " (16mm) ML (LR), T2 Arrow™ ⁵ / ₈ " (16mm) ML (LR), T1 Corbin Ruswin® ⁵ / ₈ " (16mm) ML (LR) 5999 ML (LR), T2 Yale® ⁵ / ₈ " (16mm) ML (LR), T2
Certifications		UL list (GXHX R4504) fire exit hardware	UL List (GXHX R4504) fire exit hardware
Application notes	1	2	3

Application notes:

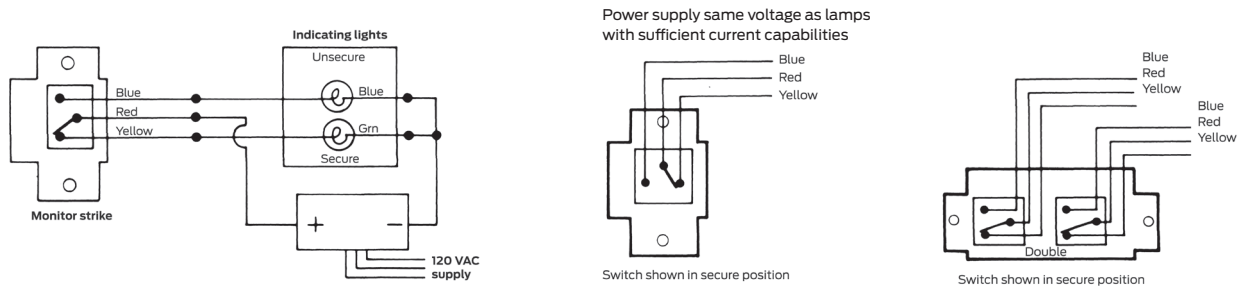
The 4263 is non-handed and features horizontal adjustment to compensate for misalignment of door and frame. 4263 may be used with a mullion. Tripper selection (-T1 or -T3) is based upon the lock to be used with.

The 4268 features horizontal adjustment to compensate for misalignment of door and frame. 4268-T1 is not for use with mullions.

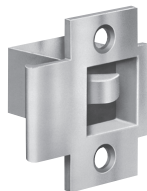
For use on single or pair of doors with ANSI 115.3 frame cutout (frame modification required.) Tripper selection (-T1 or -T2) is based upon the lock to be used.

Monitor strikes

Basic monitor strike circuit



Series 4570T1, 4670-T1, 4690-T2, 4690-1-T2



Model specifications						
Model #	4570-T1		4670-T1		4690-T2	4690-1-T2
Lockset	Cylindrical locks		Cylindrical locks		Concealed vertical rod exit devices	Concealed vertical rod exit devices
# Doors	Single or pair		Single or pair		Wide stile pair of doors	Narrow stile pair of doors
Compatibility (with tripper type)	Schlage	1/29" (13mm) Cyl.	Schlage	1/29" (13mm) Cyl.	Von Duprin 3347A-F 3347A 9947 9947F	Von Duprin 3347A
		5/89" (14mm) Cyl.		5/89" (14mm) Cyl.		
	Falcon	1/29" (13mm) Cyl.	Falcon	1/29" (13mm) Cyl.		
		9/169" (14mm) Cyl.		9/169" (14mm) Cyl.		
	Adams Rite®	4510	Adams Rite®	4510		
		8400		8400		
	Arrow™	1/29" (13mm) Cyl.	Arrow™	1/29" (13mm) Cyl.		
	Best®	9/169" (14mm) Cyl.	Best®	9/169" (14mm) Cyl.		
	Corbin Russwin®	5/89" (16mm) Cyl.	Corbin Russwin®	5/89" (16mm) Cyl.		
	Dexter®	7/169" (11mm) Cyl.	Dexter®	7/169" (11mm) Cyl.		
Kwikset®	1/29" (13mm) Cyl.	Kwikset®	1/29" (13mm) Cyl.			
Precision™	1040 Automatic Flush Bolt¹	Precision™	1040 Automatic Flush Bolt¹			
Sargent®	1/29" (13mm) Cyl.	Sargent®	1/29" (13mm) Cyl.			
Yale®	1/29" (13mm) Cyl.	Yale®	1/29" (13mm) Cyl.			
Certifications					UL list (GXHX R4504) fire exit hardware	
Application notes	1	2		3	4	

¹ Special template required

Application notes:

For use on single or pair of doors with ANSI 115.2 frame cutout (frame modification required.) 4570-T1 is only used with T1.

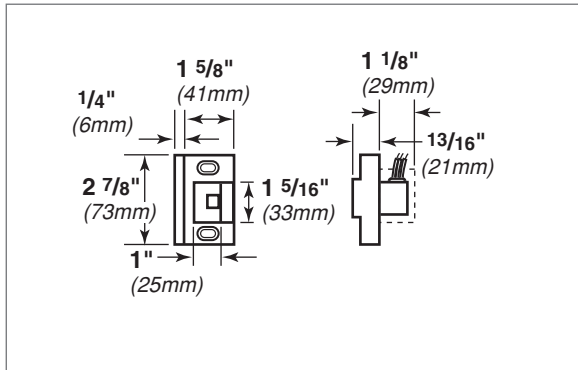
For use on single or double doors with ANSI 115.3 frame cutout (frame modification required.) 4670-T1 is only used with T1.

For use with pair of doors where one leaf has concealed vertical rods. 4690-T2 is only used with T2.

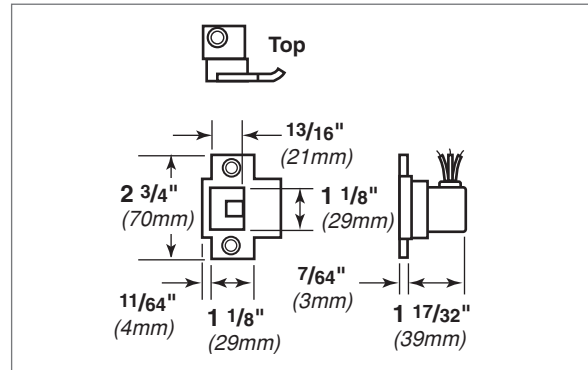
For use with pair of doors where both leaves have concealed vertical rods. 4690-1-T2 is only used with T2.

Monitor strikes dimensions

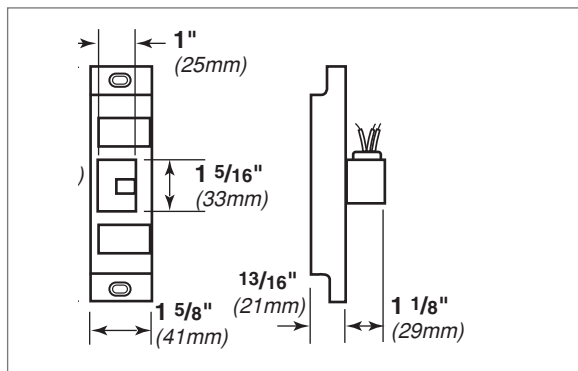
4263



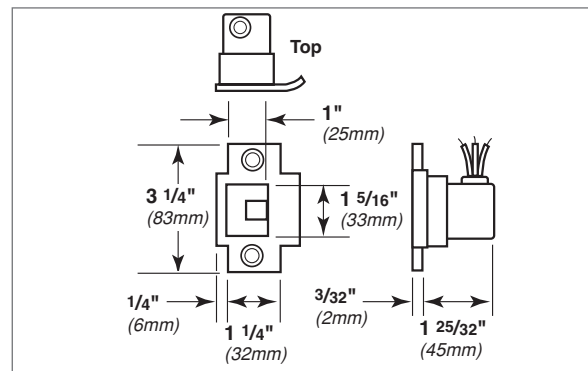
4670-T1



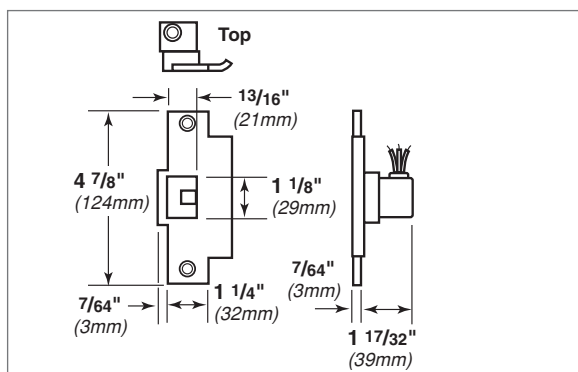
4268-T1



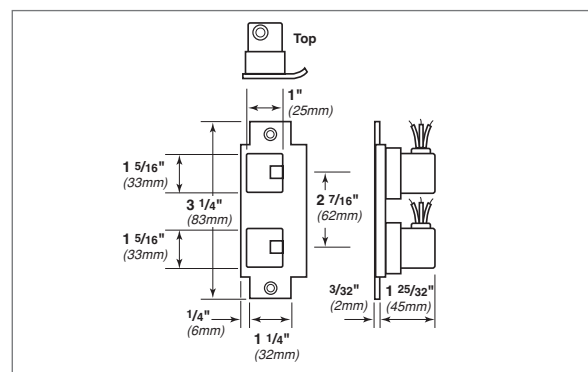
4690-T2



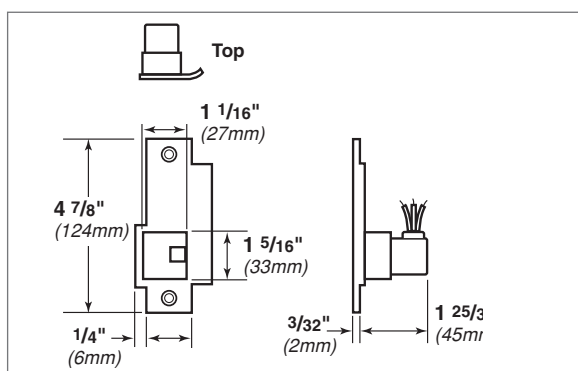
4570-T1



4690-1-T2



4582



To order, specify

1. Model
2. Tripper T1, T2 or T3
3. Handing required on model 4582
4. Specify LHR or RHR
5. Finish: US3, US4, US10, US10B, US26, US26D

Allegion, the Allegion logo, Von Duprin and the Von Duprin logo are trademarks of Allegion plc, its subsidiaries and/or affiliates in the United States and other countries. All other trademarks are the property of their respective owners.