



911179-00

# 8875 & 8875-F

VON DUPRIN®

Mortise Lock Devices

Installation Instructions

1. Install threshold(s), if used, and fit and hang door(s).
2. Check that device handing matches door handing.
3. Tape full size RHR or LHR lock stile case and hinge stile case templates to inside face of door (Figure 1). Be sure center line of device is 39-13/16" from finished floor. Prepare inside face of door for device per templates.
4. Prepare lock stile of door for mortise lock (see mortise lock instructions 941019).
5. Prepare outside face of lock stile for trim (see trim instructions). Line X-X on trim instructions corresponds to line X-X on device template.
6. Prepare trim for installation (see trim instructions).
7. Install mortise lock (Figure 2).
8. For 1-3/4" thick doors, cut 3/8" off device lift finger.
9. Attach device cases to door (Figure 3).
10. Push down lock stile lever and check for full retraction of latch bolt. Release and check for full extension (3/4"). Adjust lift finger if necessary (Figure 4).
11. Measure dimension "X" (Figure 3) and cut crossbar tube to dimension "X." Cut end without hole.
12. Install crossbar tube and wedge assembly (see instructions 941009) and test crossbar for free action.
13. Prepare frame for strike (Figure 5).
14. Install strike to frame with two #12-12 x 12-24 x 1" combination screws.

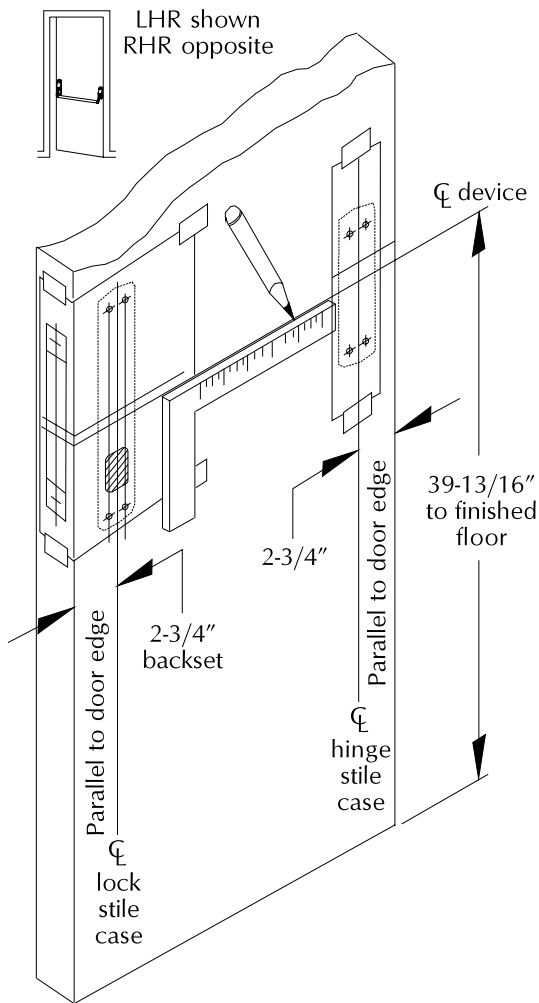


Figure 1. Prepare Door

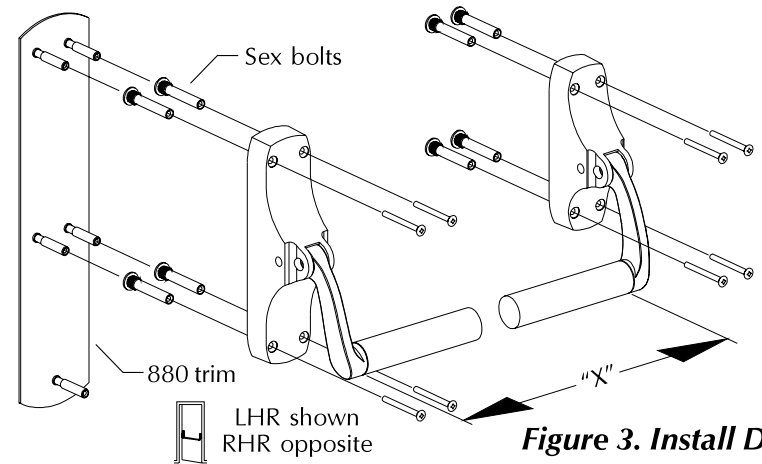


Figure 3. Install Device

Mounting	Fasteners
Surface	#10-12 x 10-24 x 2" combination screws (supplied with device)
880 trim	#10-24 machine screws
Sex bolts	#10-24 machine screws

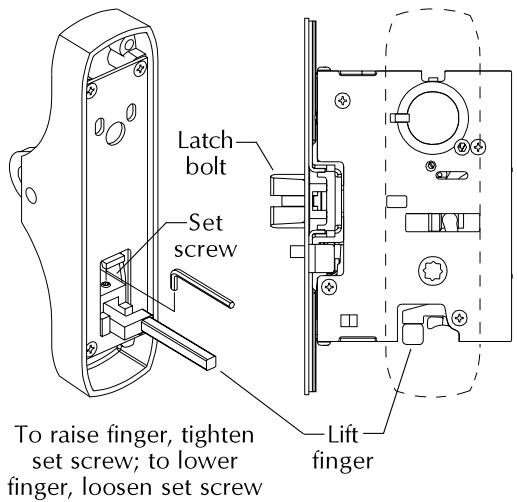


Figure 4. Adjust Lift Finger

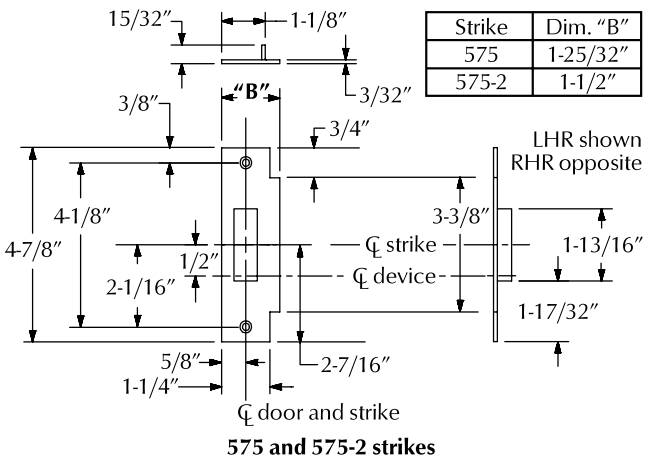
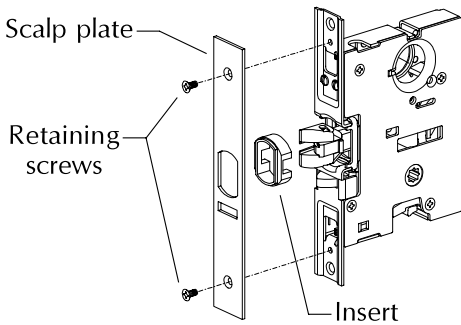


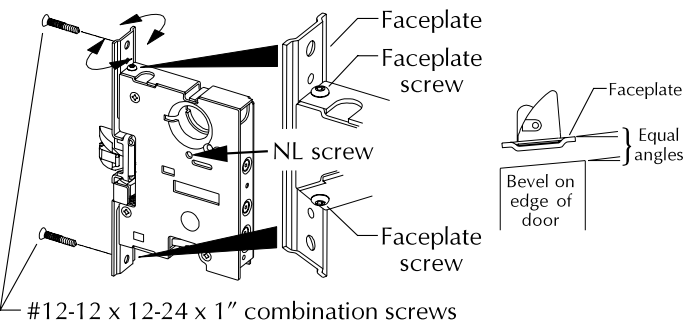
Figure 5. Prepare Frame for Strike

Figure 2. Install Mortise Lock

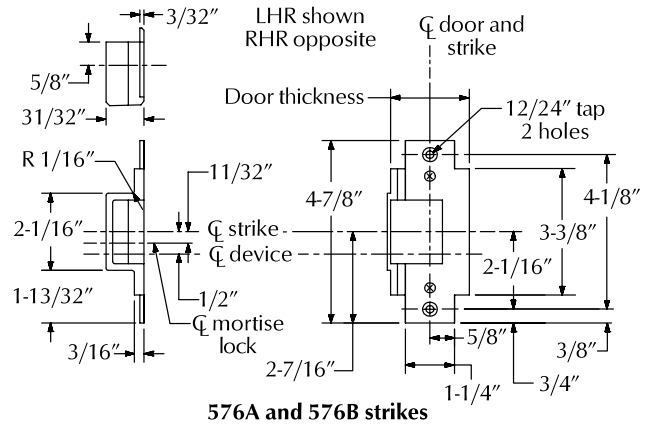
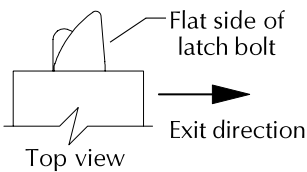
1. Remove retaining screws, scalp plate, and insert.



2. For TP and K trims turn NL screw clockwise all the way in.
3. Loosen top and bottom faceplate screws, pivot faceplate to match door bevel, tighten top and bottom faceplate screws.
4. Install mortise lock into door with two #12-12 x 12-24 combination screws.



5. Rotate latch bolt so flat side faces exit direction.
6. Replace insert, scalp plate, and scalp plate retaining screws.

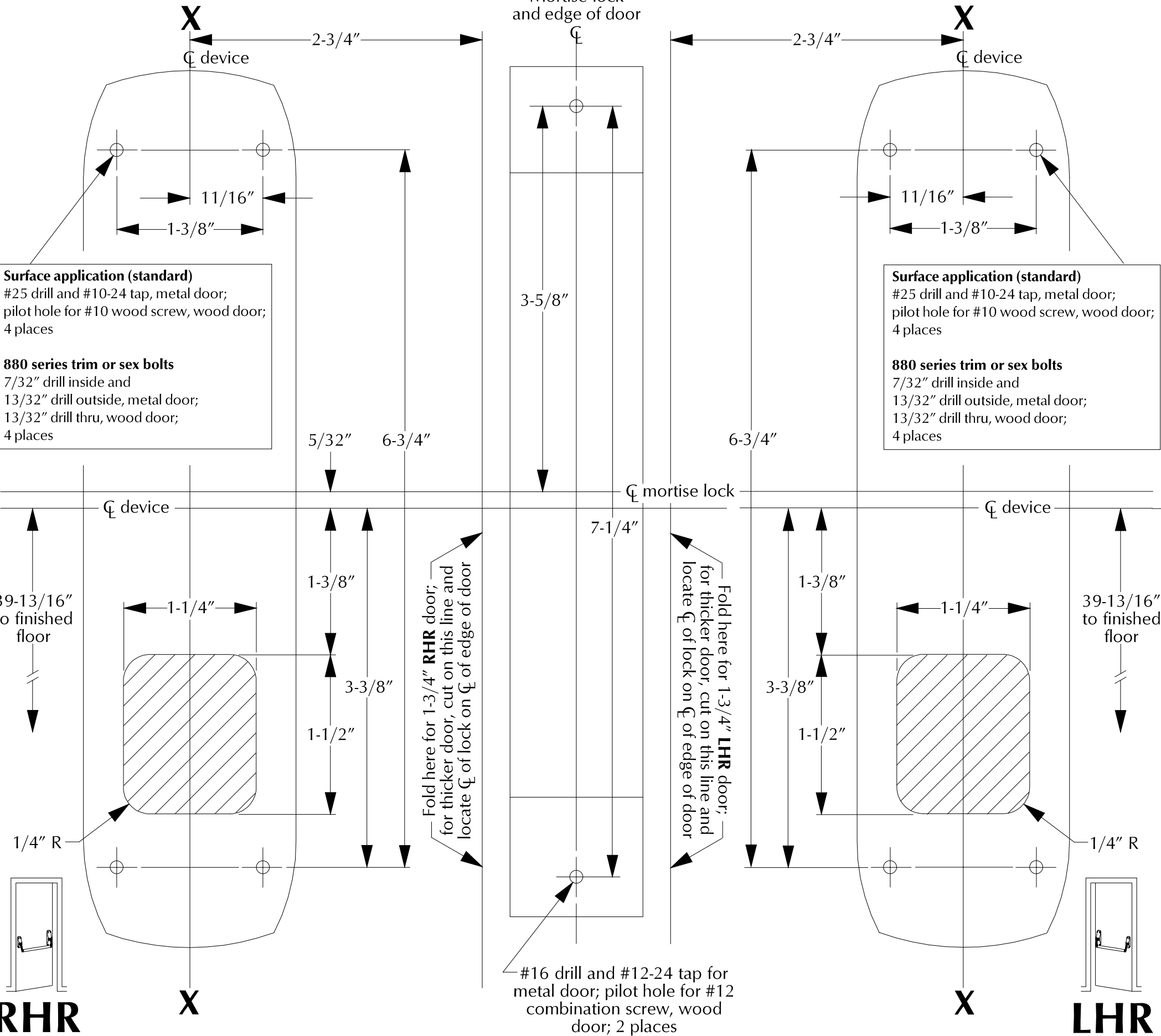


Customer Service

1-877-671-7011 www.allegion.com/us

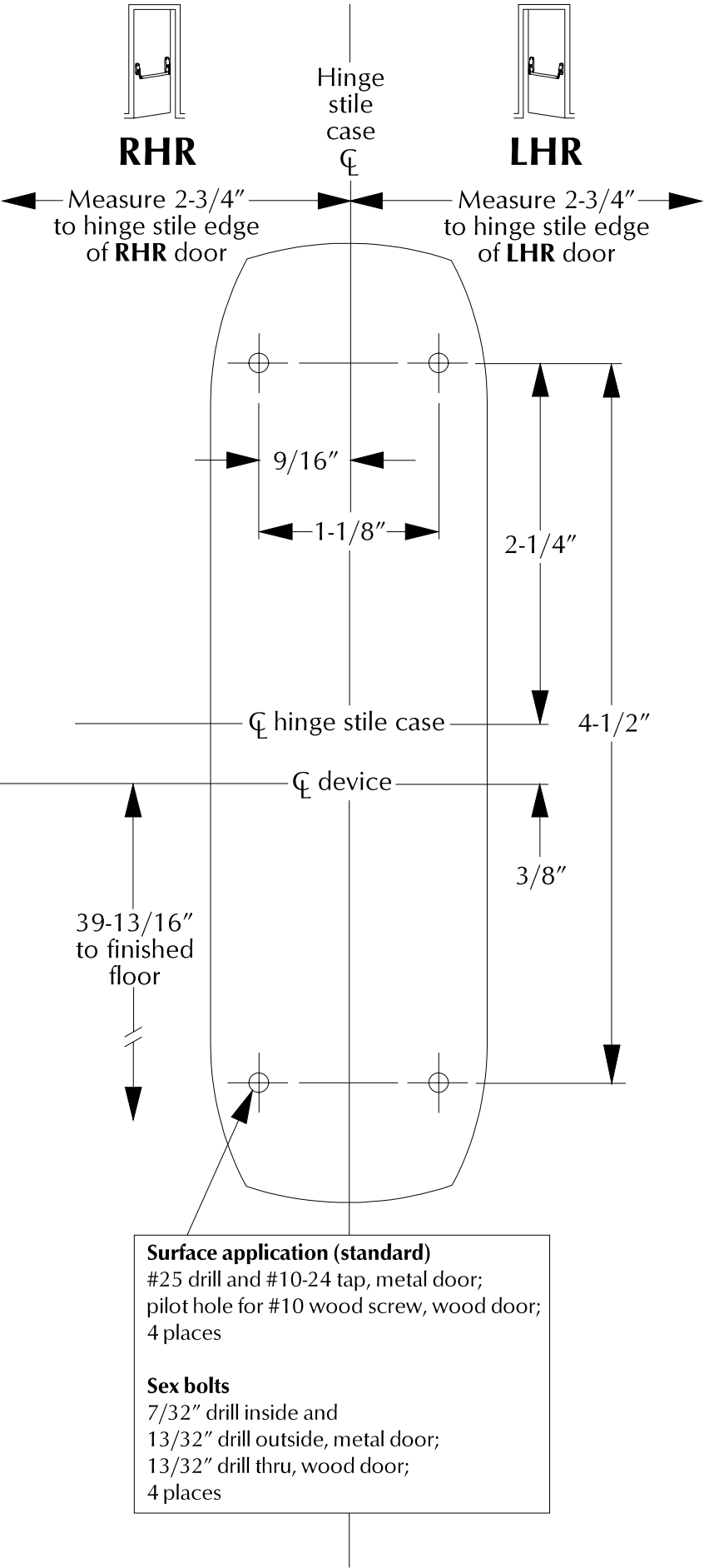


8875/8875-F Template



CUT HERE

CUT HERE





941108-00

# 373-L, 373-L-BE

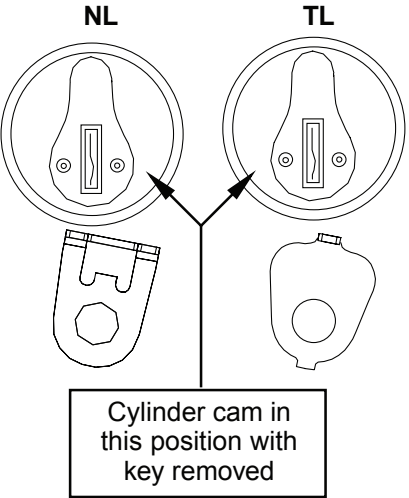
VON DUPRIN®

Control for 44/88 Mortise and 8827 Device on Metal or Wood Door

Installation Instructions

## INSTALLATION INSTRUCTIONS

1. Prepare door for exit device. See exit device instructions for locations of holes, backset (line X-X), and center lines.
2. Prepare door for control:
  - a. Transfer line X-X from inside (exit device side) of door to outside (control side) of door. Use extra care if edge of door is beveled. Be sure line X-X is parallel to edge of door.
- ① **Note: See back side of sheet for hole preparation for metal or wood.**
  - b. Locate and prepare holes as indicated.
3. Install cylinder into control if required (Figures 1 & 2). Insure cylinder cam is set for required function and replace if necessary.
4. Mortise lock or exit device must be in unlocked position before installation.
5. Install control and exit device to door.
6. Test key, control, and device action.



**TL Function** - Control remains unlocked when key is removed.

**NL Function** - Control relocks when key is removed. Requires use of key to operate.

For NL function replace TL cylinder plate (std. on all controls) with NL cylinder plate (included in polybag) replacing screw and washer.

Note: Control must be in locked position when installing cylinder plate.

Figure 1

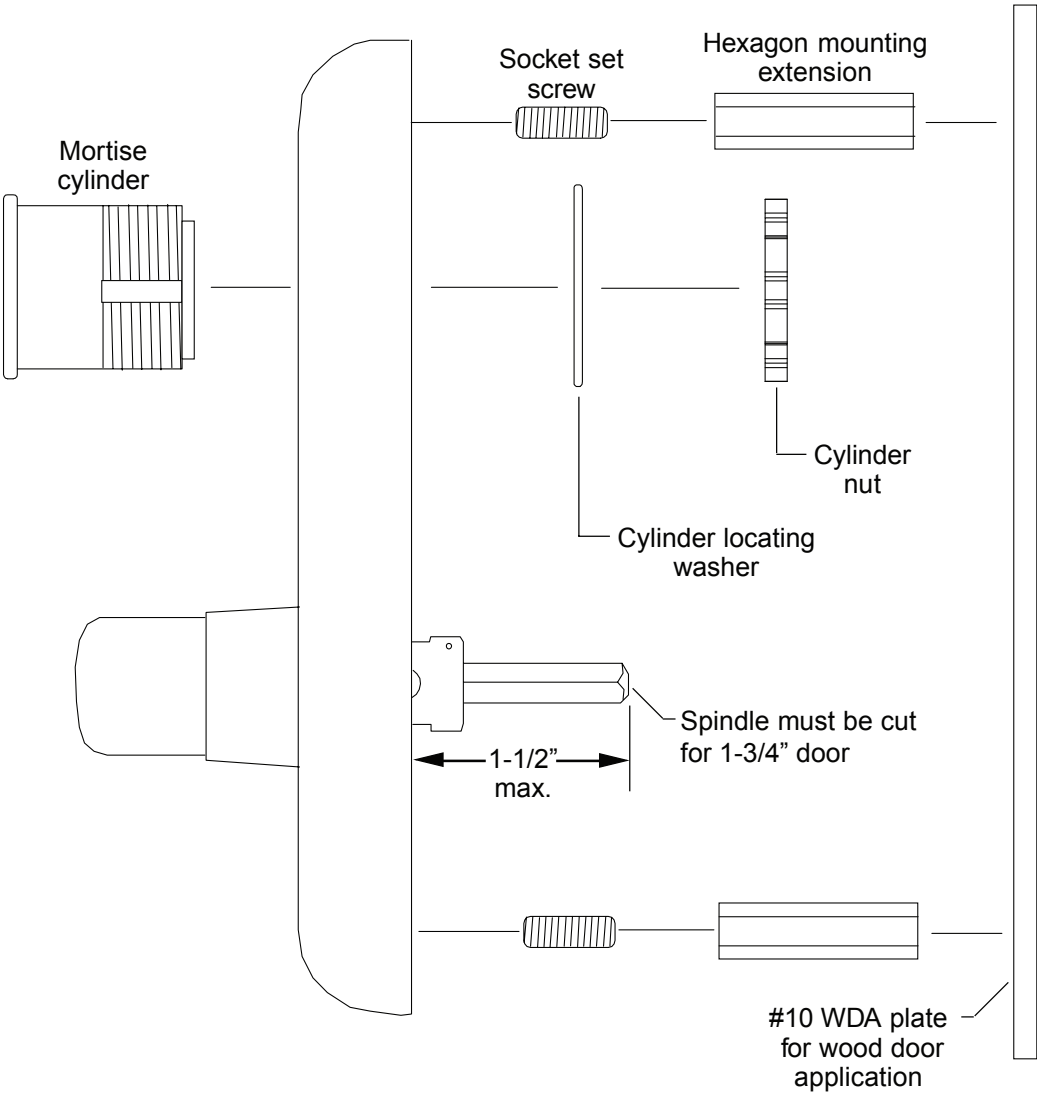
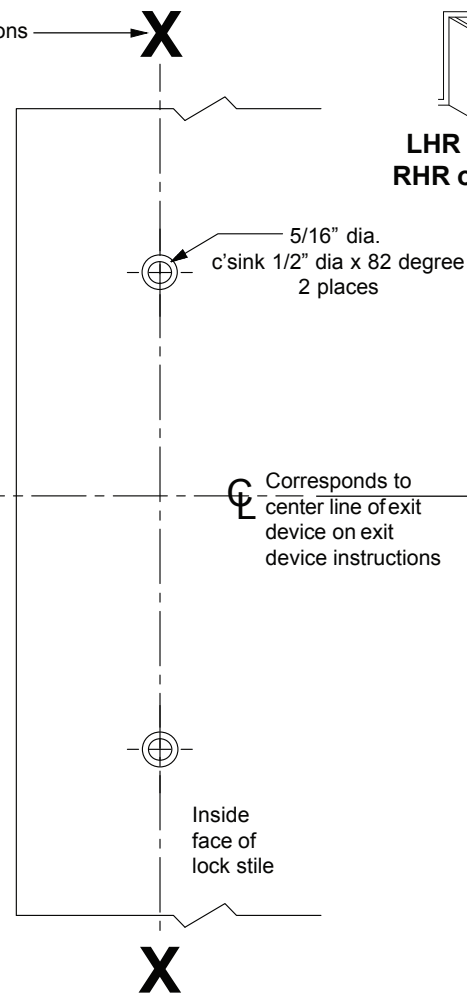
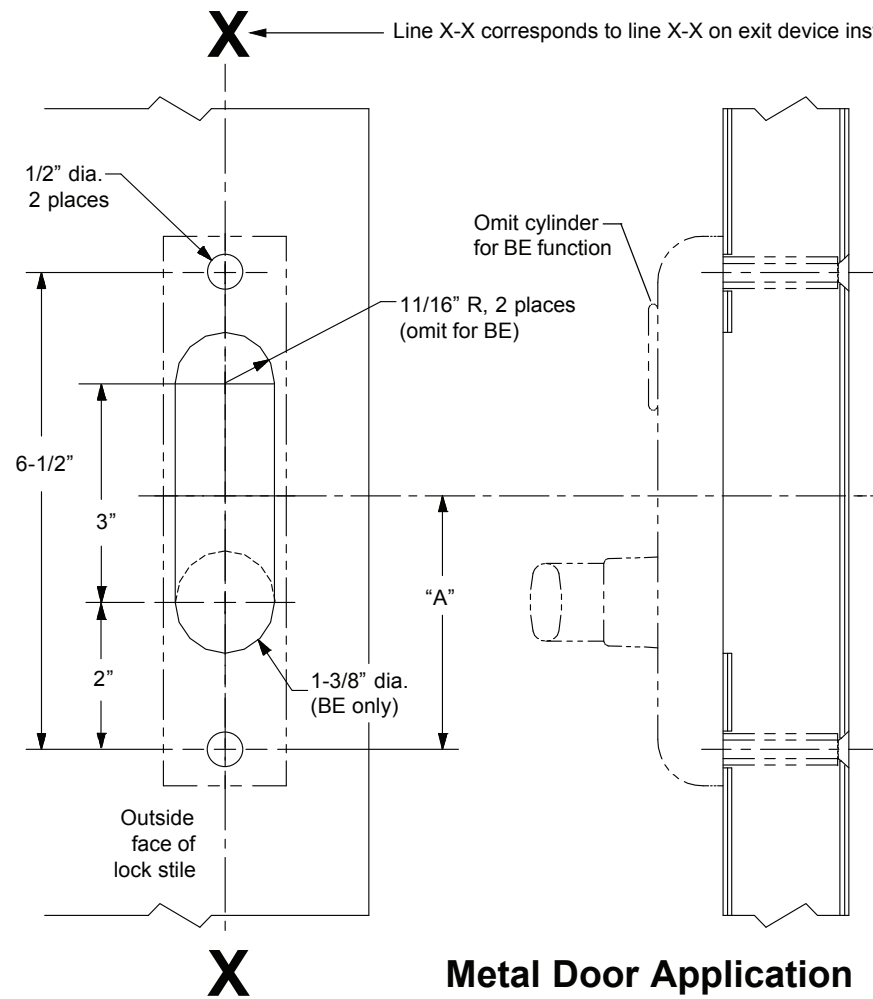
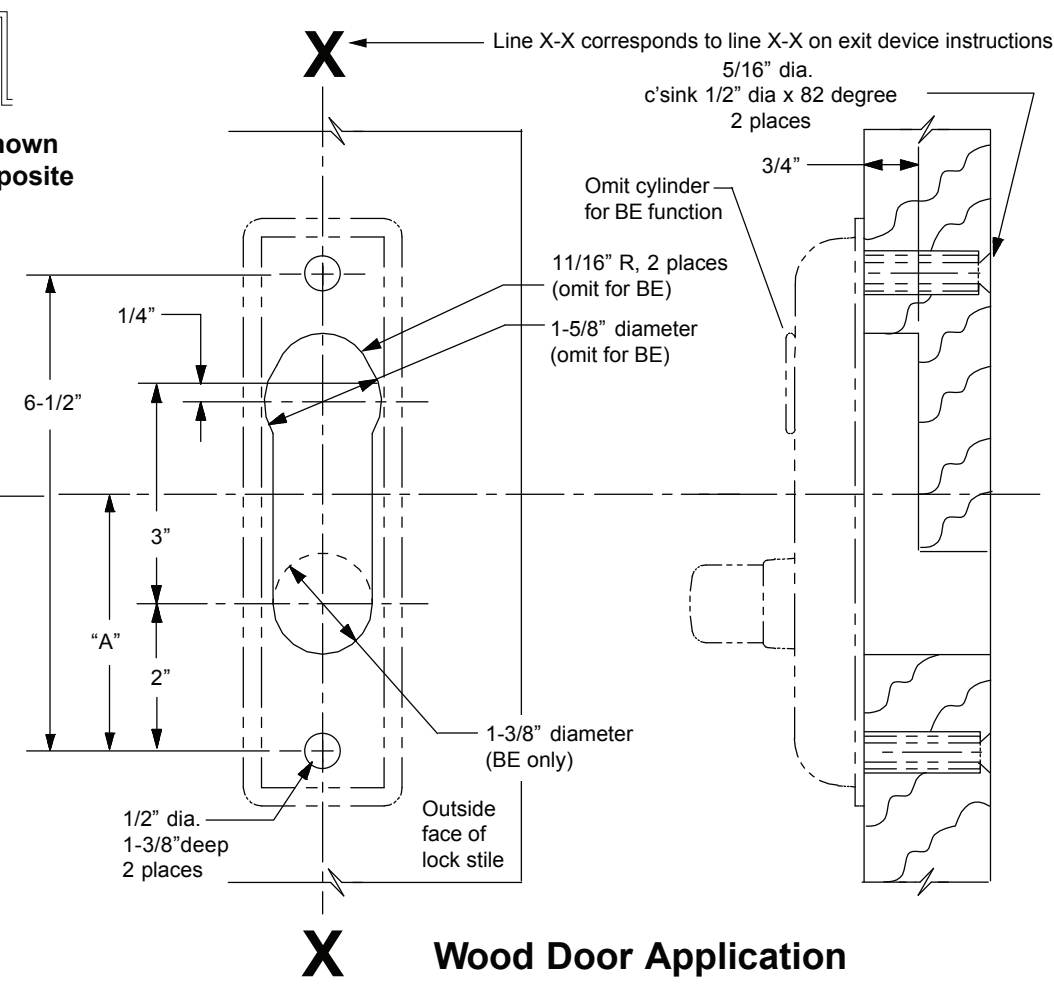


Figure 2



LHR shown  
RHR opposite



For cutouts on inside face of door see instructions in device carton.	Device Application Schedule	
	Device	Dimension "A"
	8827-K, 8827-K-F	3-1/2"
	88 Mortise	3-1/4"
	44 Mortise	3-3/16"

Customer Service

1-877-671-7011 [www.allegion.com/us](http://www.allegion.com/us)



© Allegion 2014  
Printed in U.S.A.  
941108-00 Rev. 01/14-c



941108-00

# 373-L, 373-L-BE

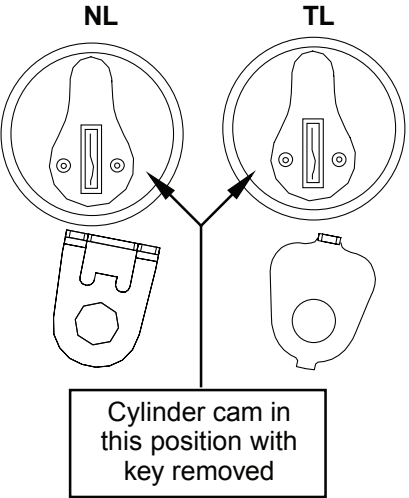
VON DUPRIN®

Control for 44/88 Mortise and 8827 Device on Metal or Wood Door

Installation Instructions

## INSTALLATION INSTRUCTIONS

1. Prepare door for exit device. See exit device instructions for locations of holes, backset (line X-X), and center lines.
2. Prepare door for control:
  - a. Transfer line X-X from inside (exit device side) of door to outside (control side) of door. Use extra care if edge of door is beveled. Be sure line X-X is parallel to edge of door.
- ① **Note: See back side of sheet for hole preparation for metal or wood.**
  - b. Locate and prepare holes as indicated.
3. Install cylinder into control if required (Figures 1 & 2). Insure cylinder cam is set for required function and replace if necessary.
4. Mortise lock or exit device must be in unlocked position before installation.
5. Install control and exit device to door.
6. Test key, control, and device action.



**TL Function** - Control remains unlocked when key is removed.

**NL Function** - Control relocks when key is removed. Requires use of key to operate.

For NL function replace TL cylinder plate (std. on all controls) with NL cylinder plate (included in polybag) replacing screw and washer.

Note: Control must be in locked position when installing cylinder plate.

Figure 1

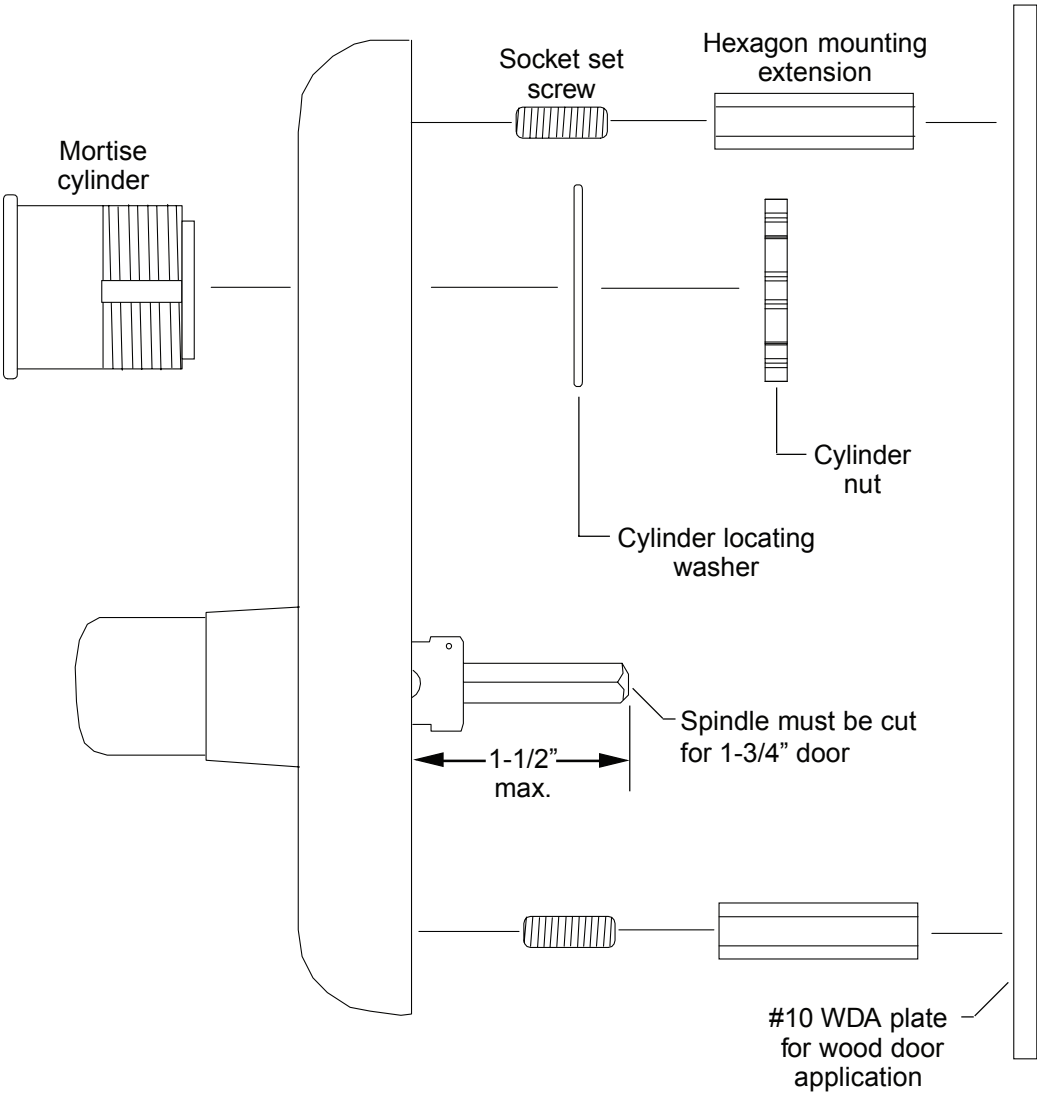
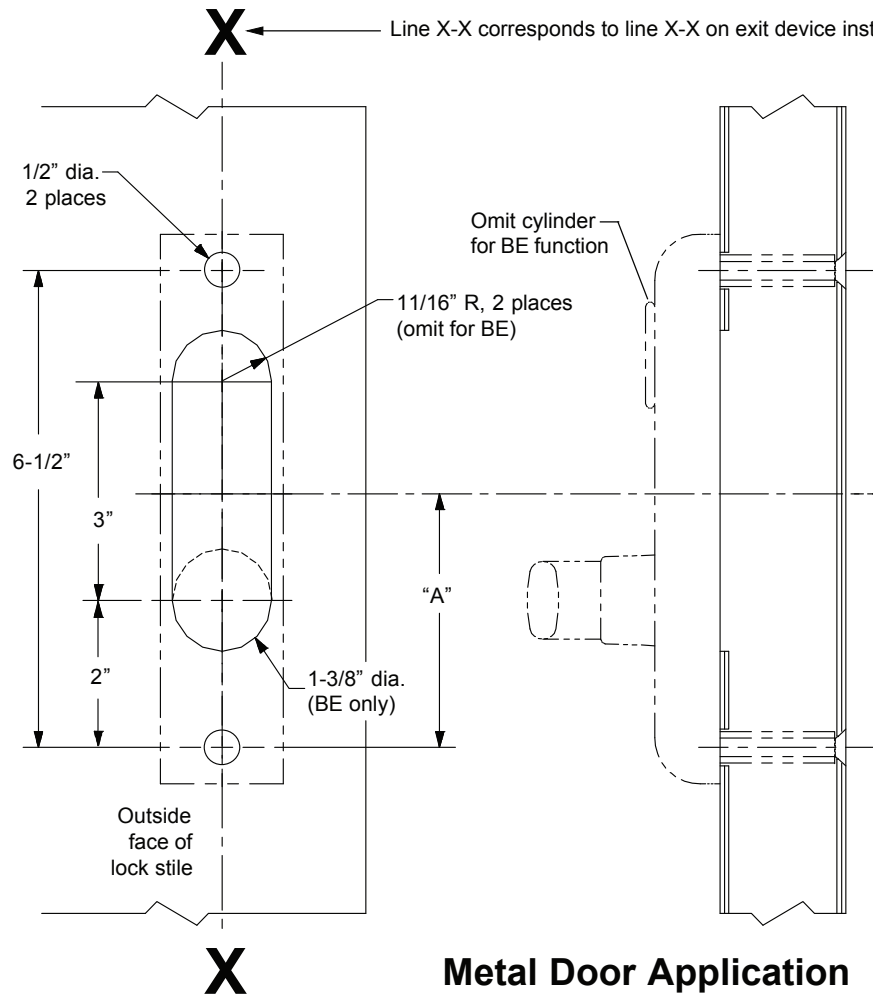
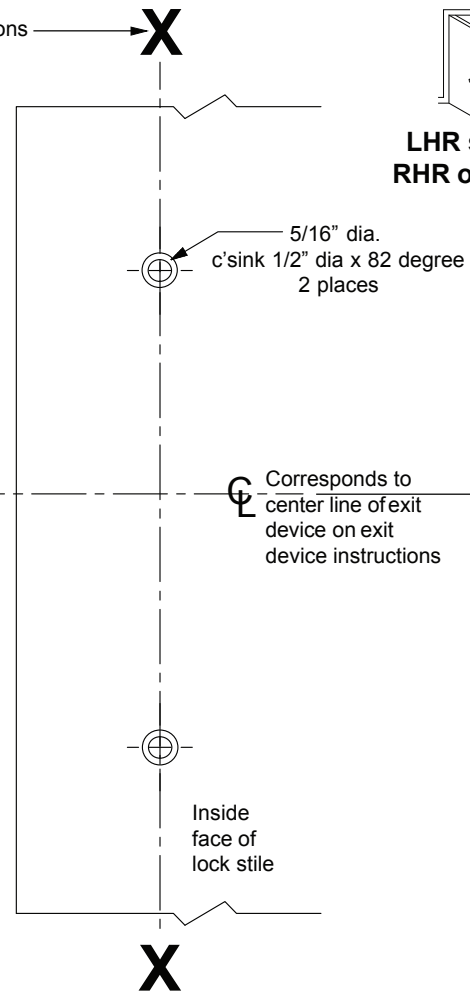


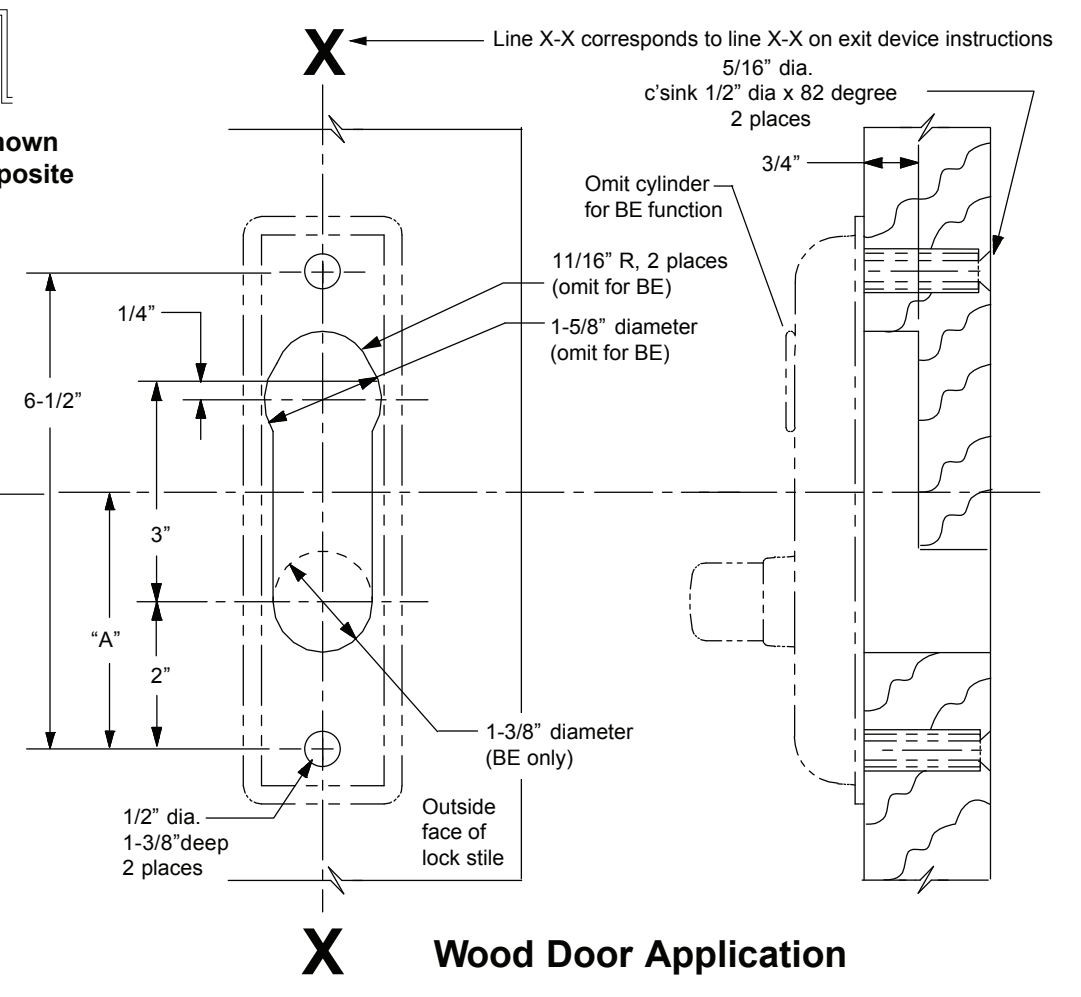
Figure 2



**Metal Door Application**



**LHR shown  
RHR opposite**



**Wood Door Application**

For cutouts on inside face of door see instructions in device carton.	Device Application Schedule	
	Device	Dimension "A"
	8827-K, 8827-K-F	3-1/2"
	88 Mortise	3-1/4"
	44 Mortise	3-3/16"

**Customer Service**

1-877-671-7011 [www.allegion.com/us](http://www.allegion.com/us)

