

# 6300 Series surface mounted strike for rim exit devices

## Overview

Von Duprin electric strikes are known for their reliability, durability and security. The 6300 Series is designed to withstand abuse. Its heavy-duty stainless steel construction is fully UL1034 and UL10C Listed.

6300 Series electric strikes are designed for use with a variety of rim devices. It interfaces with the latch mechanism of the exit device. The movable lip (keeper) allows a door to open even when the latch bolt is extended. This feature, called remote release, provides added benefits such as increased convenience and efficiency. The 6300 Series also provides added security and traffic control.

6300 Series electric strikes are ideal for aftermarket applications. It is easy to install without modifying or altering the door frame. To assure the proper selection of an electric strike on new applications, lockset compatibility charts are shown on the next page. When using a lockset not listed or when retrofitting a strike to an existing application, please contact Von Duprin technical support for application assistance.

The 6300 is fail-secure (FSE) only to achieve compliance with UL10C for fire-rated openings. In a fail-secure application, the door is normally locked. To unlock the door, power must be applied. The 6300 strike can be used with either 12VDC or 24VDC. There are 2 connectors that ship with it and the appropriate connector for either 12VDC or 24VDC will be used, based upon the available voltage at the opening.

## Features

- Non-handed design provides greater flexibility
- Requires no alteration or cutting to existing frame
- UL1034 burglary-resistant and
- UL10C electric strike for fire door
- Stainless steel (satin) finish
- Durable stainless steel construction
- Field selectable voltage 12VDC or 24VDC
- Meets BHMA A156.31, Grade 1 for endurance and strength
- Static strength 1300 lbs
- Dynamic strength 70 ft-lbs
- Endurance 1,000,000 cycles



## 6300 Surface mount specifications

| Model | Voltage | Current | Duty       | Amps | Ohms |
|-------|---------|---------|------------|------|------|
| 6300  | 12V     | DC      | Continuous | 0.50 | 22   |
| 6300  | 24V     | DC      | Continuous | 0.24 | 89   |

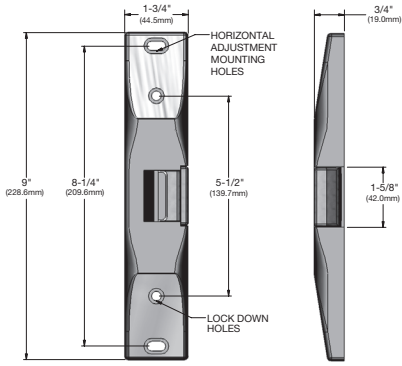
## Rim exit device compatibility 6300 strikes

| Manufacturer     | Model Number             |
|------------------|--------------------------|
| Von Duprin       | VD 22/22-F Rim           |
| Von Duprin       | VD 33A/35A Rim           |
| Von Duprin       | VD 55 Rim                |
| Von Duprin       | VD 88/88-F Rim device    |
| Von Duprin       | VD 98/99 and 98/99-F Rim |
| Falcon           | Falcon 24/24-F Rim       |
| Falcon           | Falcon 25/25-F Rim       |
| Falcon           | Falcon 19/19-F Rim       |
| Falcon Doromatic | Falcon Doromatic 1790    |
| Falcon Doromatic | Falcon Doromatic 2090    |

## Model specifications

|                          |   |
|--------------------------|---|
| <b>Model #</b>           | 6300  |
| <b>Retrofits model</b>   | N/A   |
| <b>Latchbolt throw</b>   | 3/4"  |
| <b>Face plate length</b> | 9"  |
| <b>Projection</b>        | 3/4"  |
| <b>Lockset</b>           | Rim exit device   |
| <b># Doors</b>           | Single or pair with mullion   |
| <b>Door/frame type</b>   | Hollow metal, aluminum and wood   |
| <b>EB (entry buzzer)</b> | Optional  |
| <b>Certifications</b>    | UL1034, UL10C   |
| <b>Application notes</b> | Surface mounted electric strike ideal for aftermarket applications. Strike designed for use with Von Duprin 98/99, however it can be used with most rim exit devices. |

# 6300 Series dimensions



DC = Direct current

Continuous duty = Energized 1 min. or more

**Note:** When using device not listed or when retrofitting a strike to an existing application, please contact Von Duprin Technical Support for application assistance.

## Ordering information

6300 - S024 - EB

| Model | Rectifier kit* | Buzzer* |
|-------|----------------|---------|
| 1     | 2              | 3       |

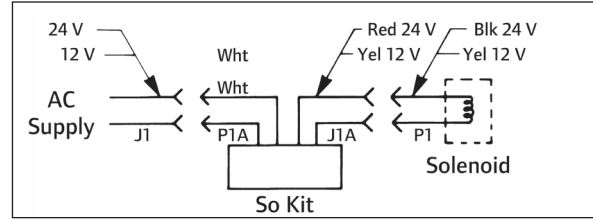
\* Optional

|      |   |
|------|---|
| 1    | Model   |
| 6300 | Surface mounted strike for rim exit devices               |
| 2    | Rectifier kit (optional)                                  |
| S012 | Converts 12 VAC voltage to 12 VDC to operate the solenoid |
| S024 | Converts 24 VAC voltage to 24 VDC to operate the solenoid |
| 3    | Buzzer (optional)   |
| EB   | Entry buzzer  |

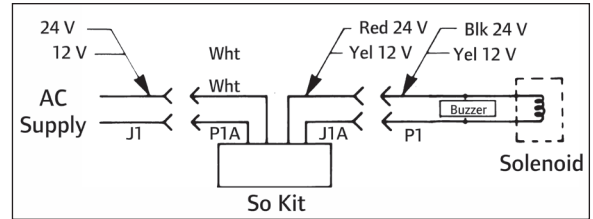
## Standard features

- Power failure mode: Fail-Secure (FSE)
- Voltage: field selectable 24 VDC or 12 VDC
- Finish: stainless steel, satin (US32D/32)

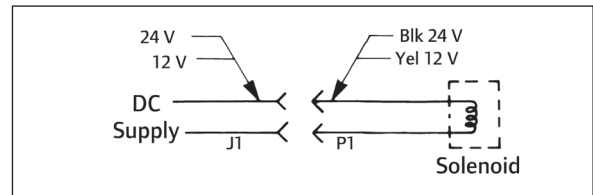
### AC



### AC with buzzer



### DC



### DC with buzzer

