



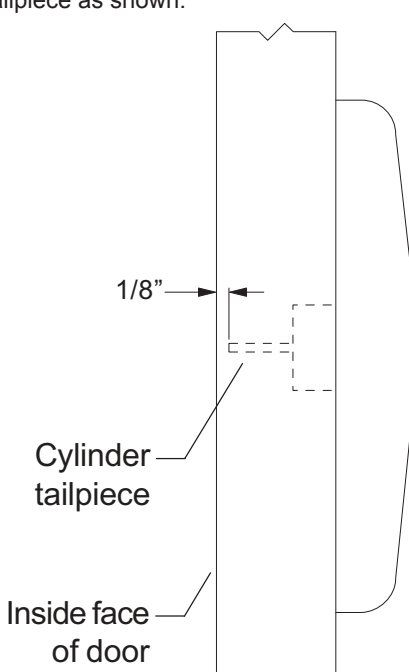
941093-00

388NL

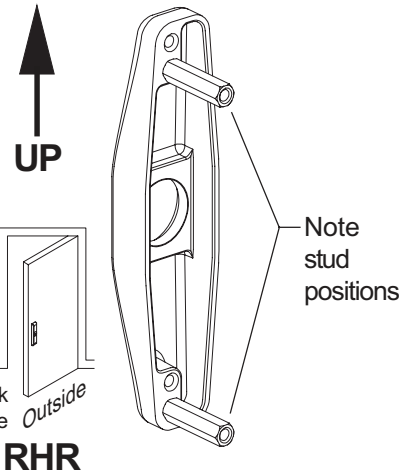
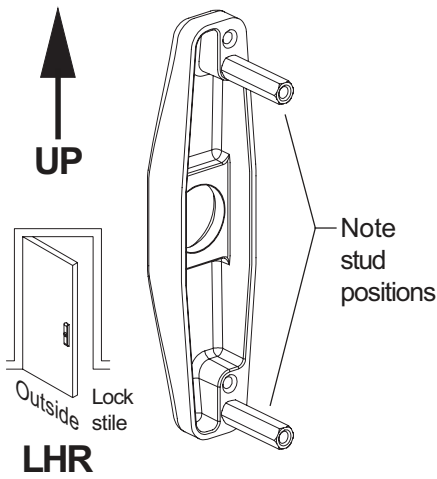
VON DUPRIN®

Cylinder Control

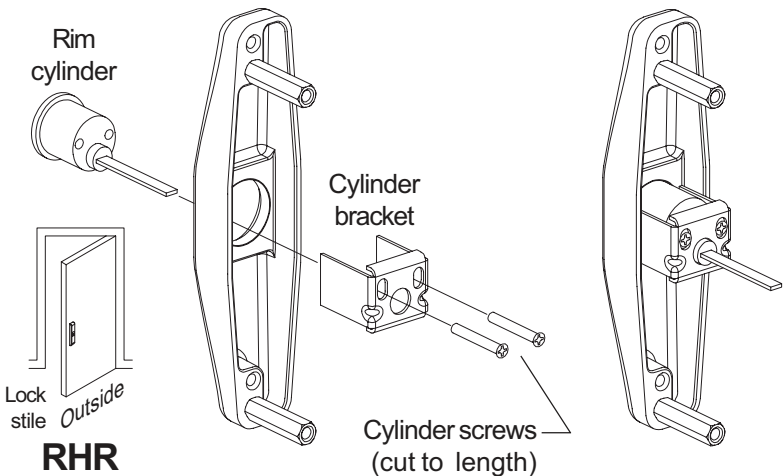
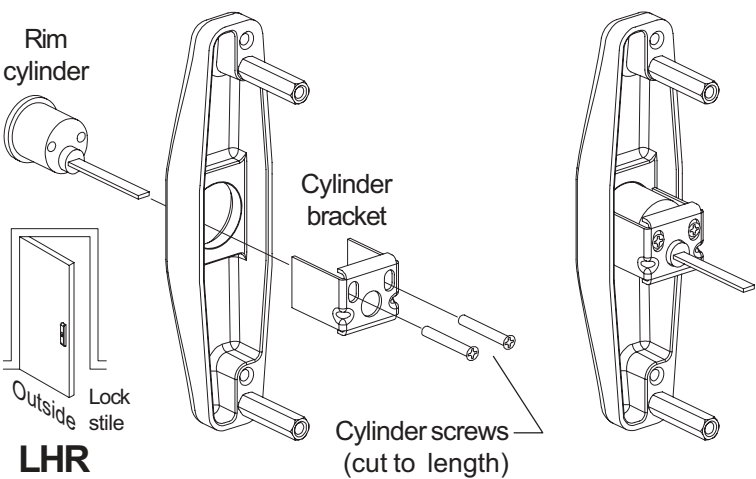
Installation Instructions

| 1 Prepare door for exit device. | To Adjust Tailpiece Length |
|-----------------------------------------------------------------------------------------------------------------------------------------------------------------------------------------|-------------------------------------------------------------------------------------|
| See exit device instructions for locations of holes, backset (line X-X) and center lines. | Cut cylinder tailpiece as shown. |
| 2 Prepare door for control: |  |
| 2a Transfer line X-X from inside (exit device) side of door to outside (control side) of door. Use extra care if edge of door is beveled. Be sure line X-X is parallel to edge of door. | |
| 2b Locate and prepare holes as shown on other side. | |
| 3 Prepare control: | |
| 3a Orient control as shown for your application (RHR or LHR) and make sure mounting studs are in positions shown. If not, move mounting studs to correct positions. | |
| 3b Install cylinder. | |
| 3c If necessary, adjust tailpiece length. | |
| 4 Apply exit device and control. | |

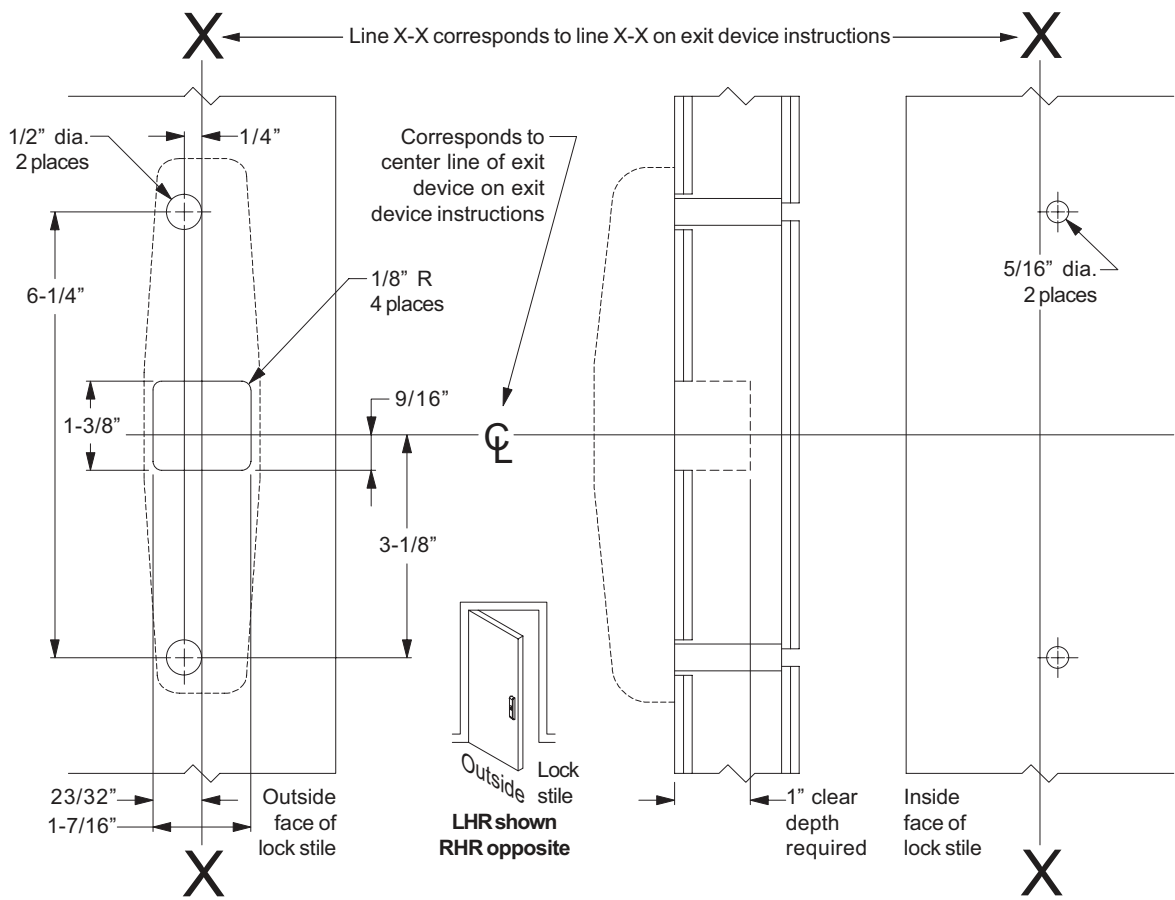
CONTROL AND MOUNTING STUD POSITIONS



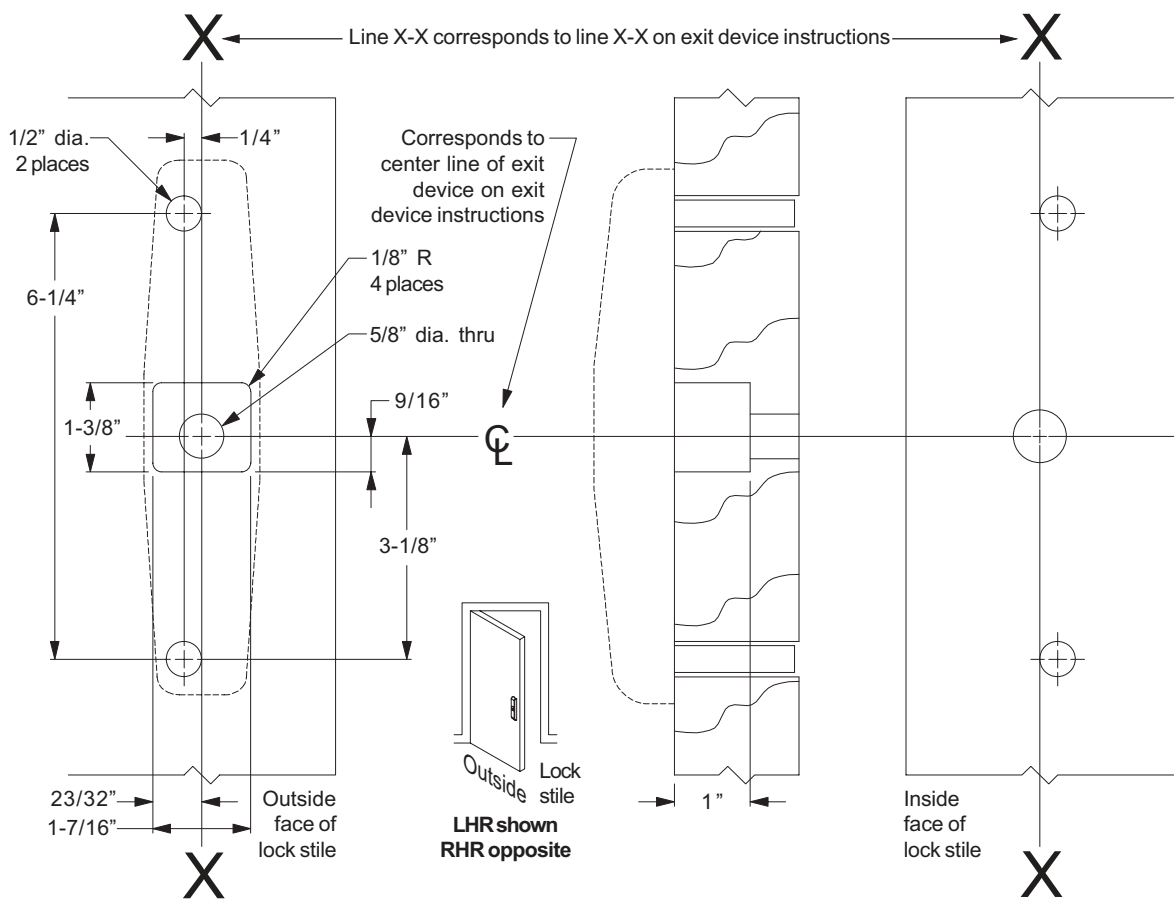
TO INSTALL CYLINDER



Door Preparation, Metal Door Application



Door Preparation, Wood Door Application



For cutouts on inside face of door, see exit device instructions.

| Device Application Schedule |
|-------------------------------------|
| 33A/35A Rim Device |
| 3327A/3527A Vertical Rod Device |
| 3347A/3547A Vertical Rod Device |
| 3348A/3548A Vertical Rod Device |
| 3327A-F/3527A-F Vertical Rod Device |
| 3347A-F/3547A-F Vertical Rod Device |
| 3348A-F/3548A-F Vertical Rod Device |