



SCHLAGE

# ALX Series

Grade 2 modular, cylindrical locks





# The Schlage® ALX Series cylindrical lock

## The proven AL Series has evolved

As a Grade 2 lock, the AL Series has always offered a combination of strength and durability alongside Schlage trusted key system options at a price point favorable to any application. Though these qualities remain, the lock has changed. ALX Series' features now deliver flexibility and value beyond strength and security. X Factor qualities, born from modular design, define a lock that exceeds expectations. AL Series' evolution to the ALX Series is a revolution in lock design.

## Why modular design is important





The Schlage ALX Series gives you the ability to use it as you would any other lock: ordered and delivered as a complete, configured product ready for installation. However, in its new modular design, ALX Series offers you the flexibility to utilize the separate components of chassis, function and lever packaged kits to create a lock to meet your needs on demand. So whether you are a distributor wanting to offer same day pickup on configured locks in uncommon levers and finishes, a locksmith wanting truck stock solutions that eliminate call backs, or a facility manager wanting to repurpose rooms and change lock functions without the expense of new hardware, ALX Series can work for you.

## Installing



Access interactive, visual instructions for installation on your smart phone, any time, any place. [ALLEhelp.com/ALX](http://ALLEhelp.com/ALX)



### Information and customer care

-  [us.allegion.com](http://us.allegion.com)
-  US 877.671.7011  
Canada 800.900.4734
-  [support@allegion.com](mailto:support@allegion.com)  
[Mechanical\\_Locks\\_TechProdSupport@allegion.com](mailto:Mechanical_Locks_TechProdSupport@allegion.com)
-  [www.youtube.com/schlagesecurity](http://www.youtube.com/schlagesecurity)

### Ordering

-  [Allegion\\_Orders@allegion.com](mailto:Allegion_Orders@allegion.com)
-  eFax: 1.833.312.3669





## Innovation that works for you

Walter Schlage invented the cylindrical lock in 1920. Since then, the Schlage brand has consistently delivered innovation and continuous improvement with trusted lock products that last. In that tradition, we are extremely proud to introduce a new way of thinking about what a cylindrical lock can do for your business or facility. The humble cylindrical lock is now modular and flexible in a way that makes it easier than ever to problem solve security and functional needs on the spot. ALX Series is an innovation made to exceed your expectations.

## Allegion brings you a complete infrastructure of support throughout the entire build and ownership process

Allegion provides comprehensive support from our sales offices including consultations, master key development and training; industry and code training, specification writing, and product service. And because Schlage products are part of Allegion brands, they are made to suite with Von Duprin® exit devices, LCN® door closers, and Steelcraft® doors and frames. For tools and support, go online to learn how Allegion can help you be more productive, simplify your ordering process, eliminate installation errors and gain sales support.

# The X Factor

Qualities defining a lock designed to exceed expectations

The Schlage ALX Series is a grade 2 lock unlike any other. As a modular lock, it features a single, patent pending chassis design that supports most functions and all cylinder applications. The lock's ability to be configured on site to meet the functional need let's you avoid problems. You can do more with less, giving you an unprecedented level of flexibility to every aspect of how you use it in your business.

### Extreme installation simplicity

- Accommodates 1 3/8" to 1 3/4" door thickness with minimal chassis adjustment
- Captured screws in latch, strike and inside spring cage eliminate small, loose parts



### Expansive lever offering

Perfectly suites with ND Series levers to offer 10 total lever designs



### Extra functionality

Field reversible Vandlgard® to non-Vandlgard locked lever engagement

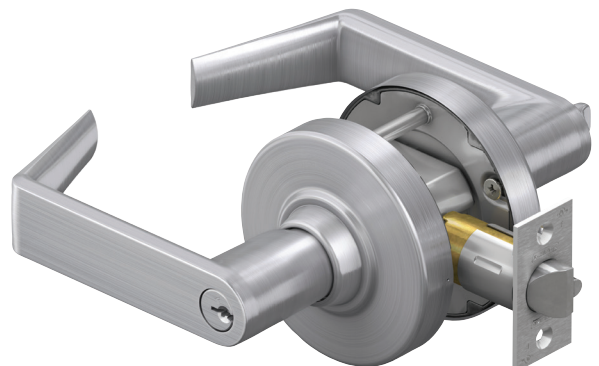
### Exceptional durability

- Deep-drawn spindle with 5 points of lever engagement minimizes droop and wobble
- Grade 1 compression springs

## Next level parts management

The ALX Series gives you the advantage both on the job site and in the warehouse with flexible buying options. In its kitted form, the chassis is purchased separately from function and lever kits which are sold in convenient packs of five. Fewer unique parts means more space in your warehouse. There is also a special locksmith mix pack covering 10, 40, 50, 53 and 80 functions to help optimize truck stock.

Schlage ALX Series can be purchased as a configured lock...





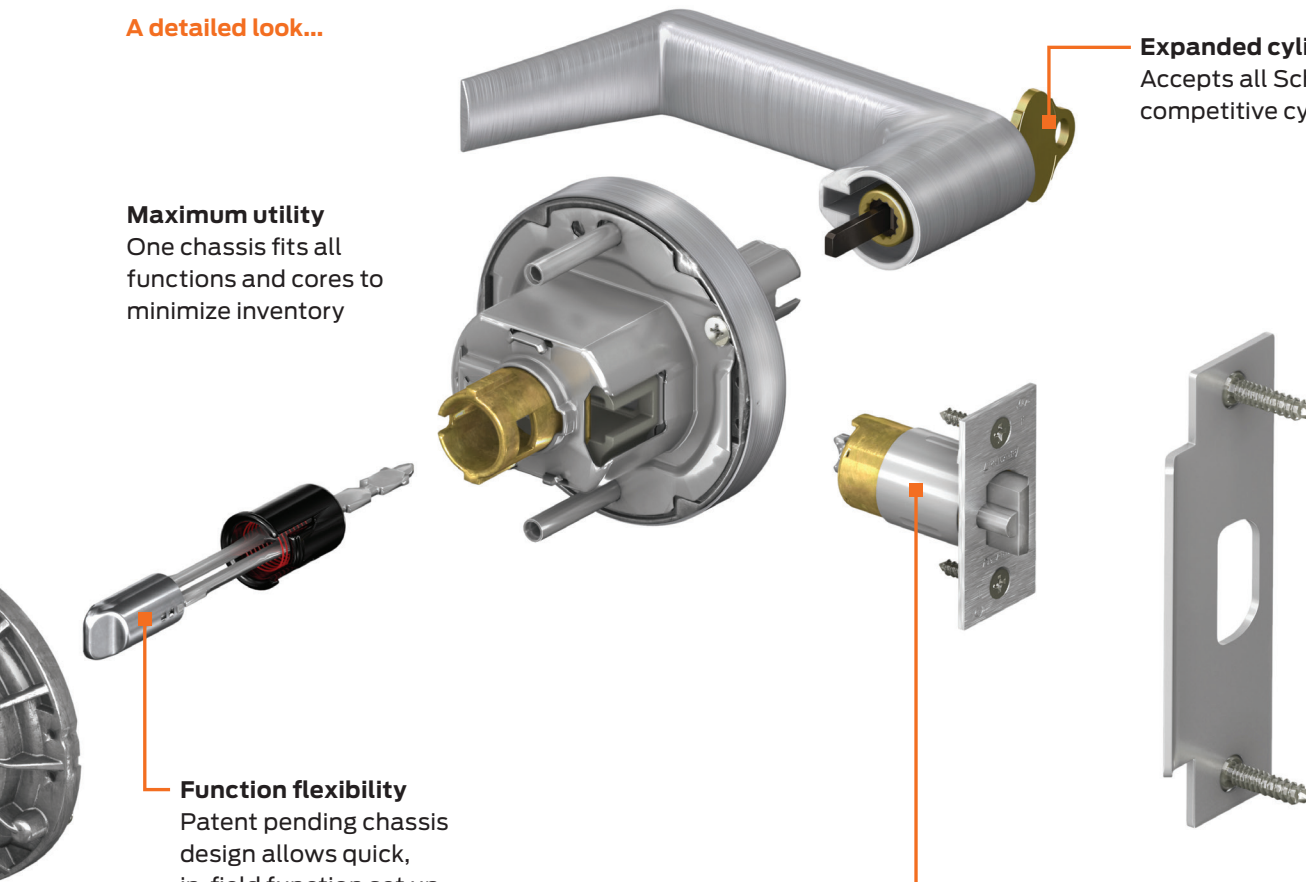
**A detailed look...**

**Maximum utility**  
One chassis fits all functions and cores to minimize inventory

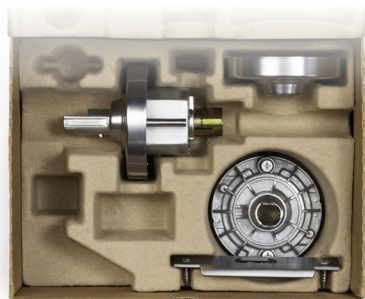
**Expanded cylinder support**  
Accepts all Schlage plus five competitive cylinder formats

**Function flexibility**  
Patent pending chassis design allows quick, in-field function set up

**Exceeds Grade 2 strength expectations**  
Stainless steel latchbolt



or as configurable kits for warehouse and jobsite flexibility.



Chassis kits are chosen solely by desired finish. They are shipped non-Vandgard but can be field-configured for Vandgard functionality.



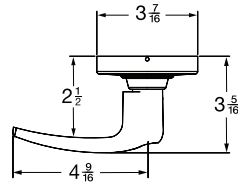
Function kits are sold in packs of five defined by function, finish, and latch backset. Locksmith assortment kits are available.



Levers are sold in five packs of same design with inside levers defined by function, finish and design, and outside levers by function/cylinder, finish and design.

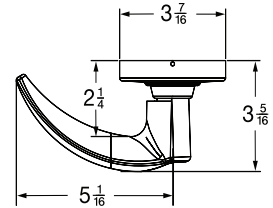
# Lever designs and finishes

Athens (ATH)



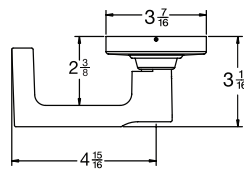
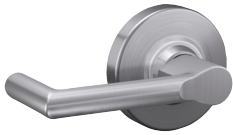
**Cores** KIL, FSIC, SFIC, L-SAR, L-CO6, J-SAR, J-CO6

Omega (OME)<sup>1,2</sup>



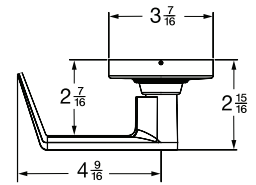
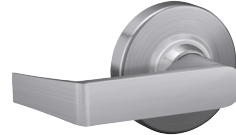
**Cores** KIL, FSIC, SFIC

Boardwalk (BRK)<sup>1</sup>



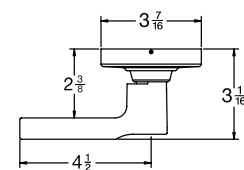
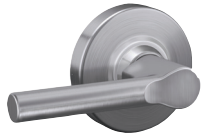
**Cores** KIL, FSIC, SFIC

Rhodes (RHO)<sup>1</sup>



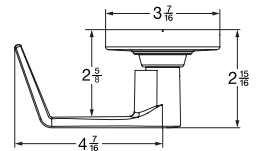
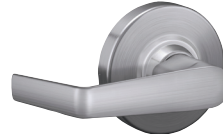
**Cores** KIL, FSIC, SFIC, L-SAR, L-CO6, J-SAR, J-CO6, J-CO7

Broadway (BRW)



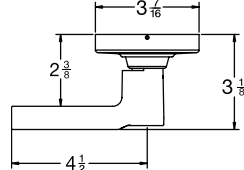
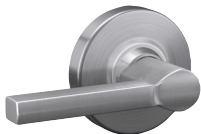
**Cores** KIL, FSIC, SFIC

Saturn (SAT)<sup>1</sup>



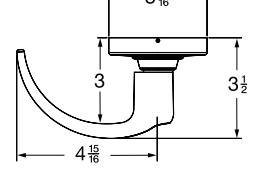
**Cores** KIL

Latitude (LAT)



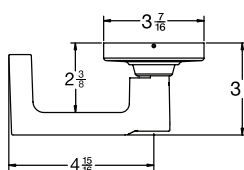
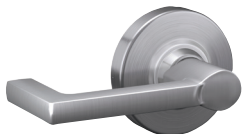
**Cores** KIL, FSIC, SFIC

Sparta (SPA)<sup>1</sup>



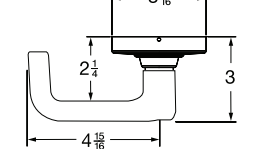
**Cores** KIL, FSIC, SFIC, L-SAR, L-CO6, J-SAR, J-CO6

Longitude (LON)<sup>1</sup>



**Cores** KIL, FSIC, SFIC

Tubular (TLR)<sup>1</sup>



**Cores** KIL, FSIC, SFIC, L-SAR, L-CO6, J-SAR, J-CO6

Finish options

Color	Bright brass	Satin brass	Satin bronze	Oil rubbed bronze	Satin nickel	Matte black	Bright chrome	Satin chrome	Aged bronze
ANSI/BHMA number	605	606	612	613	619	622	625	626/626AM <sup>3</sup>	643e

1. Boardwalk, Longitude, Omega, Rhodes, Saturn, Sparta and Tubular levers comply with California State code for return within 1/2" of door face.  
 2. Omega levers not available for kit system orders.  
 3. Antimicrobial finish option is not available for kit system orders.

Product information and specifications contained in this catalog are subject to change without notice. Please consult the factory.

## Accessibility and life safety

# Accessibility and life safety

Door hardware should be as effective in helping people go about their lives as it is in securing their environments. The Schlage ALX Series is designed with this requirement in mind.

### Accessibility

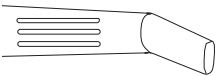
All Schlage ALX Series levers comply with the Americans with Disabilities Act (ADA), which requires that “Operable parts shall be operable with one hand and shall not require tight grasping, pinching, or twisting of the wrist. The force required to activate operable parts shall be 5 pounds (22.2 N) maximum.”



### Tactile warning for the visually impaired

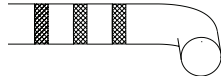
Tactile warning is a special texture that can be applied to either lever to alert the visually impaired to a potential hazard on the opposite side of the door (exit to street, a workshop or other hazardous area, etc). Tactile warning is specified by an 8 prefix on the lever design.

Milled



Order as follows:  
 8AT for Athens  
 8LT for Latitude  
 8LN for Longitude  
 8RO for Rhodes  
 8SP for Sparta

Knurled



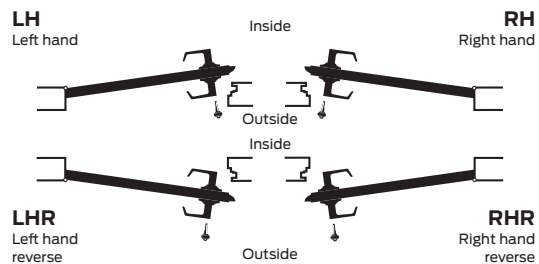
Order as follows:  
 8BK for Boardwalk  
 8BW for Broadway  
 8TR for Tubular

### Life safety

The Schlage ALX Series is UL listed for use on 3-hour fire doors up to 4'0" x 8'0" for standard latches, grade 1 latch performance options available. The Boardwalk, Longitude, Omega, Rhodes, Saturn, Sparta and Tubular levers comply with the California State fire code for return to within 1/2" of the door face.

### Door handing

ALX Series locks can be configured during installation to support any door handing. As a result, it is not necessary to specify handing during the ordering process.



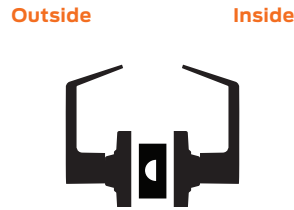
ALX Series cylindrical functions

Schlage ALX Series functions can be created or changed in-field simply and quickly.

Non-keyed functions

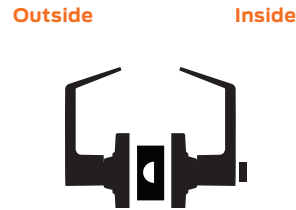
Schlage ANSI  
**10 F75**  
**Passage latch**  

- No key; plain lever both sides; spring latch
- Both levers always unlocked



Schlage ANSI  
**40 F76**  
**Bath/bedroom privacy lock**  

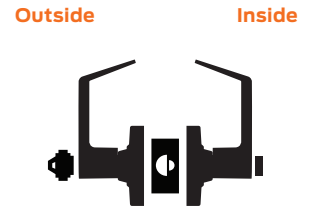
- No key; emergency access coin turn outside; push button inside; spring latch
- Inside push button locks outside lever
- Turn inside lever or close door to release button and prevent lock-out; outside coin turn provides emergency access
- Field selectable Vandlgard® feature
- Inside lever is always free for immediate egress



Keyed functions

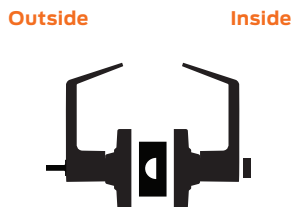
Schlage ANSI  
**50 F82**  
**Entrance/office lock**  

- Key cylinder outside; push button inside; deadlatch
- Inside push button locks outside lever
- Unlock with key outside or by rotating inside lever
- Field selectable Vandlgard® feature
- Inside lever always free for immediate egress



Schlage ANSI  
**44 -**  
**Hospital privacy lock**  

- No key; emergency turn-button outside; push button inside; spring latch
- Inside push button locks outside lever
- Turn inside lever or close door to release button and prevent lock-out; outside turn-button provides emergency access
- Field selectable Vandlgard® feature
- Inside lever is always free for immediate egress



Schlage ANSI  
**170 -**  
**Single dummy trim**  

- No key; rigid plain lever outside; no hardware inside; no latchbolt
- Use as door pull or matching inactive trim

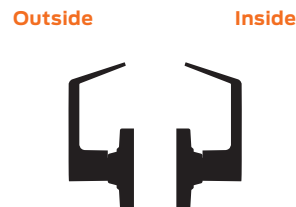
Notes: Not available for in-field function changes.



Schlage ANSI  
**172 -**  
**Double dummy trim**  

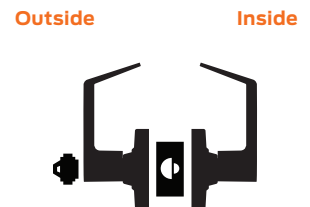
- No key; rigid, plain lever both sides; no latchbolt
- Use as door pull or matching inactive trim

Notes: Latch cover available. Not available for in-field function changes.



Schlage ANSI  
**70 F84**  
**Classroom lock**  

- Key cylinder outside; plain lever inside; deadlatch
- Key in outside lever locks or unlocks outside lever
- Field selectable Vandlgard® feature
- Inside lever always free for immediate egress





## ALX Series mechanical lock function list

Schlage ANSI

**53 F109**

### Entrance lock

- Key cylinder outside; push/turn button inside; deadlatch
- Inside button locks outside lever by pushing button or pushing and turning button
- Pushed button: unlock with key outside or by rotating inside lever
- Pushed/turned button: key outside retracts latch only; unlock by returning inside button to home position then using key or rotating inside lever
- Field selectable Vandlgard® feature
- Inside lever always free for immediate egress

Outside Inside



Schlage ANSI

**80 F86**

### Storeroom lock

- Key cylinder outside; plain lever inside; deadlatch
- Outside lever always fixed
- Key can retract the latch
- Field selectable Vandlgard® feature
- Inside lever always free for immediate egress

Outside Inside



As a grade 2 lock perfectly suited to the ND Series, ALX allows you to seamlessly suite between the two to gain grade 1 strength, security and functionality when needed.

### Non-keyed functions

Schlage	ANSI	ALX	ND	Function description
10	F75	■	■	Passage latch
12	F89		■	Exit lock
12EL			■	Exit lock - electrically locked (fail safe)
12EU			■	Exit lock - electrically unlocked (fail secure)
25			■	Exit lock (no exterior lever)
40	F76	■	■	Bath/bedroom privacy lock
44		■	■	Hospital privacy lock
170		■	■	Single dummy trim
172		■	■	Double dummy trim

### Keyed functions

Schlage	ANSI	ALX	ND	Function description
50	F82	■	■	Entrance/office lock
53	F109	■	■	Entrance lock
60	F88		■	Vestibule lock
66	F91		■	Store lock
70	F84	■	■	Classroom lock
73	F90		■	Corridor lock
75	F110		■	Classroom security lock
80	F86	■	■	Storeroom lock
80EL			■	Storeroom lock - electrically locked (fail safe)
80EU			■	Storeroom lock - electrically unlocked (fail secure)
82	F87		■	Institution lock
85	F93		■	Faculty restroom lock

### Special functions

Schlage	ANSI	ALX	ND	Function description
25 x 70			■	Classroom exit lock
25 x 80			■	Storeroom exit lock
30	F77		■	Patio lock
45			■	Time out lock (Vandlgard standard)
60			■	Vestibule with closed outside lever
70 x 80			■	Classroom by storeroom lock
72	F80		■	Communicating lock

■ Note: Functions denoted with black dots are also available with Vandlgard. ND Vandlgard functions may have a different order code.

Vandlgard® trim is specifically designed for highly abusive environments. The outside lever rotates freely up and down when locked, limiting the ability of vandals to apply excessive force to the chassis.



# How to order

For correct ordering and to help ensure no delays in the shipment of your product, follow the information sequence below.

## Example: SCH-ALXV53P-RHO-613-47267051-10-013-T123

Brand		Product number			Trim				Door detail				Keyway	Handing	Other requirements								
1	2	3	4	5	6	5	6	7	8	9	10	11	12	13									
		Series	Func	Cylinder suffix	Outside		Inside <sup>1</sup>		Latch part #	Strike part #	Door thickness	Extension	Keyway	Handing	Examples <sup>2</sup>								
SCH	-	ALXV	53	P6	-	RHO	-	613	-	-	-	47267051	-	10-013	-	N/A	-	N/A	-	T123	-	N/A	-
SCH	-	ALX	50	M	-	RHO	-	626	-	LON	-	622	-	-	-	N/A	-	N/A	-	R123	-	N/A	-
Defaults to factory standard if not specified.																							

1. Inside design defaults to outside design unless specified.  
 2. Examples include: Competitive keyway cylinder part number and master keying requirements.

### Detail

- Brand:** Schlage=SCH
- Series:** ALX (for any lock function when Vandgard lever engagement is not desired)  
ALXV (for functions 40, 44, 50, 53, 70 and 80 preset to Vandgard lever engagement)
- Function:** Choose from function list on pages 8 and 9.
- Cylinder suffix:** Choose cylinder type
 

<b>P</b> 6-pin Conventional (keyed 5)	<b>R</b> 6-pin FSIC (full size)	<b>J-SAR</b> Less FSIC, made to fit Sargent 6300
<b>P6</b> 6-pin Conventional (standard)	<b>M</b> SL 7-pin FSIC (A2 pinning)	<b>G7</b> 7-pin SFIC (slide capping)
<b>Z</b> SL 7-pin Conventional (A2 pinning)	<b>T</b> Refundable construction FSIC	<b>BDC</b> Disposable construction SFIC
<b>L</b> Less Conventional cylinder	<b>J</b> Less FSIC	<b>H</b> Refundable construction SFIC
<b>L-CO6</b> Less cylinder, made to fit Corbin 2000-033	<b>J-CO6</b> Less FSIC, made to fit Corbin 8000	<b>B</b> Less SFIC
<b>L-SAR</b> Less cylinder, made to fit Sargent 10L, 11L	<b>J-CO7</b> Less FSIC, made to fit Corbin 8000-7	
- Outside/inside trim:** Indicate abbreviation of lever design. Fill in inside design if different. If knurled/milled tactile warning is desired preface code with the number 8. (8AT, 8BK, 8BW, 8LT, 8LN, 8RO, 8SP, or 8TR)
 

ATH Athens	LON Longitude	SAT Saturn
BRK Boardwalk	OME Omega	SPA Sparta
BRW Broadway	RHO Rhodes	TLR Tubular
LAT Latitude		
- Outside/inside finish:** Choose outside finish from available options. Fill in inside finish if different.
 

605 Bright Brass	619 Satin Nickel	626 Satin Chrome
606 Satin Brass	622 Matte Black	626AM Satin Chrome Antimicrobial
612 Satin Bronze	625 Bright Chrome	643e Aged Bronze
613 Oil Rubbed Bronze		
- Backset/latch part number:** Leave blank for standard latch or specify part number if non-standard latch is required.
- Strike part number:** Leave blank for standard strike or specify part number if non-standard strike is required.
- Door thickness:** Accommodates 1 3/8" through 1 3/4" doors without needing to be specified.
- Extension:** Not available.
- Keyway:** Everest 29 S123 is standard when ordering Conventional or FSIC cylinders; Everest 29 R123 is standard when ordering SFIC cylinders. Other keyways available.
- Handing:** Leave blank - ALX lever options are non-handed.
- Other requirements:**
  - Keying detail may include additional keys (with quantity) requests, large bow keys, master keying (example: Grand Master keyed, Master keyed, change key, etc.)
  - Orders specifying use of restricted keyways must be accompanied by appropriate authorizations



## Options for configured locks

## Latches

Schlage ALX Series latches accommodate flat or beveled edge doors, and are finished to match the lock trim. All ALX Series latches have 1/2" throw and 1" housings except the anti-friction fire door latch, which has a 3/4" throw. Please see the Schlage pricebook for more options including extended backset strikes (up to 5") and rabbited latch and strike kits.

## Grade 2, UL 10C listed for 3-hour fire door

	Specify	Backset	Description	
Springlatch (Restoring unless noted otherwise)	47267038	2 3/4"	Square corner, 1 1/8" x 2 1/4", standard	
	47267039	2 3/4"	Square corner, 1" x 2 1/4"	
	47267041	2 3/4"	Radius corner, 1" x 2 1/4"	
	47267046	2 3/8"	Square corner, 1 1/8" x 2 1/4"	
	47267048	2 3/8"	Square corner, 1" x 2 1/4"	
	47267050	2 3/8"	Radius corner, 1" x 2 1/4"	
	47272024	2 3/4"	Square corner, 1 1/8" x 2 1/4", grade 1 fire and windstorm performance <sup>1</sup>	
	14-010	3 3/4"	Square corner, 1 1/8" x 2 1/4", non-restoring <sup>1</sup>	
	Deadlatch (Non-restoring)	47267042	2 3/4"	Square corner, 1 1/8" x 2 1/4", standard
		47267043	2 3/4"	Square corner, 1" x 2 1/4"
47267045		2 3/4"	Radius corner, 1" x 2 1/4"	
47267051		2 3/8"	Square corner, 1 1/8" x 2 1/4"	
47267052		2 3/8"	Square corner, 1" x 2 1/4"	
47267054		2 3/8"	Radius corner, 1" x 2 1/4"	
14-028		3 3/4"	Square corner, 1 1/8" x 2 1/4"	
13-247		2 3/4"	Square corner, 1 1/8" x 2 1/4", grade 1 fire and windstorm performance <sup>1</sup>	
14-042	2 3/4"	Square corner, 1 1/8" x 2 1/4", anti-friction fire latch <sup>1</sup>		

1. 1" housing diameter only.

Note: Specify finish. All latches for ALX Series, with the exception of the 3/4" anti-friction fire latch, locks have a 1/2" latch projection.

## Strikes

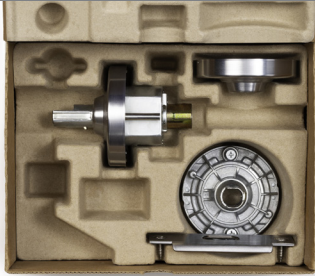


Locks are furnished with a 1 1/4" x 4 7/8" ANSI strike unless otherwise specified. Many additional strike options are available, see price book for details.

	Specify	Lip length	Description
T-strikes	10-013	1 1/8"	Square corner with dust box, 1 1/8" x 2 3/4"
	10-016	1 1/8"	Square corner with deep dust box for 3/4" fire latch, 1 1/8" x 2 3/4"
ANSI strike	47267101	1 3/16"	No dust box, 1 1/4" x 4 7/8", standard
Less strike	LLL		
Dust box	K510-066	N/A	Box for ANSI strike, must be specified

# How to order

For correct ordering and to help ensure no delays in the shipment of your product, follow the information sequence below.

## Non-keyed functions

 <p><b>1</b></p> <p><b>Order chassis kit</b></p> <ul style="list-style-type: none"> <li>• One chassis kit supports any function requiring a latch</li> <li>• Order as a part number with finish specified</li> <li>• Ordered singularly – one per box</li> <li>• Box is designed to allow you to install function kit components and levers if configured set up is preferred</li> </ul>	 <p><b>2</b></p> <p><b>Order function kit</b></p> <ul style="list-style-type: none"> <li>• Individual function kits provide latch, function components, and tailpieces where appropriate (dummy functions are not available kitted)</li> <li>• Order as a part number defined by function and backset with finish specified</li> <li>• Special locksmith mix packs available, otherwise kits are ordered as packs of five</li> <li>• Clear packaging plus markings make it easy to identify function types</li> </ul>	 <p><b>3</b></p> <p><b>Order lever packs</b></p> <ul style="list-style-type: none"> <li>• Order as a part number with function/core, finish, and design specified (available lever designs may be limited by cylinder option)</li> <li>• Ordered as separate packs of five for inside and outside levers</li> <li>• Box designed so you can see finish and function/core type plus markings make it easy to identify design</li> </ul>
---	--	---

## Keyed functions

 <p><b>1</b></p> <p><b>Order chassis kit</b></p> <ul style="list-style-type: none"> <li>• One chassis kit supports any function requiring a latch</li> <li>• Order as a part number with finish specified</li> <li>• Ordered singularly – one per box</li> </ul>	 <p><b>2</b></p> <p><b>Order function kit</b></p> <ul style="list-style-type: none"> <li>• Individual function kits provide latch, function components and tailpieces where appropriate</li> <li>• Order as a part number defined by function and backset with finish specified</li> <li>• Special locksmith mixed packs available, otherwise kits are ordered as packs of five</li> </ul>	 <p><b>3</b></p> <p><b>Order lever packs</b></p> <ul style="list-style-type: none"> <li>• Order as a part number with function/core, finish, and design specified (available lever designs may be limited by cylinder option)</li> <li>• Ordered as separate packs of five for inside and outside levers</li> </ul>	 <p><b>4</b></p> <p><b>Order cylinders</b></p> <ul style="list-style-type: none"> <li>• Order separately as cylinders with tailpieces</li> <li>• Individual tailpiece and tailpiece kit options available (70 function supplied with FSIC and SFIC tailpieces)</li> <li>• See pages 16 and 17 for details</li> </ul>
---	---	---	---



## Options for kitted locks

## Chassis kit

## Grade 2, UL 10C listed for 3-hour fire door

	Specify	Function	Description
Chassis kit	ALX CK XXX	All	Chassis kit (includes chassis, inside spring cage, Rhodes roses and ANSI strike) Purchased individually

Note: Specify finish: 605, 606, 609, 612, 613, 619, 625, 626, or 643e. Example: ALX CK 626.

## Function kits (sold in packs of 5)

## Grade 2, UL 10C listed for 3-hour fire door

	Specify	Function	Backset	Notes
Non-keyed functions	ALX FK 10 XXX 234	10 Passage	2 3/4"	Purchased in packs of 5 only.
	ALX FK 10 XXX 238	10 Passage	2 3/8"	
	ALX FK 40 XXX 234	40 Bath/bedroom privacy	2 3/4"	Specify finish: 605, 606, 609, 612, 613, 619, 625, 626 or 643e.
	ALX FK 40 XXX 238	40 Bath/bedroom privacy	2 3/8"	
	ALX FK 44 XXX 234	44 Hospital privacy	2 3/4"	Example: ALX FK 40 626 234.
	ALX FK 44 XXX 238	44 Hospital privacy	2 3/8"	
Keyed functions	ALX FK 50 XXX 234	50 Entrance/office	2 3/4"	Purchased in packs of 5 only.
	ALX FK 50 XXX 238	50 Entrance/office	2 3/8"	
	ALX FK 53 XXX 234	53 Entrance	2 3/4"	Specify finish: 605, 606, 609, 612, 613, 619, 625, 626 or 643e.
	ALX FK 53 XXX 238	53 Entrance	2 3/8"	
	ALX FK 70 XXX 234	70 Classroom	2 3/4"	Example: ALX FK 70 626 234.
	ALX FK 70 XXX 238	70 Classroom	2 3/8"	
	ALX FK 80 XXX 234	80 Storeroom	2 3/4"	Function kits are not needed for these functions. Order as configured product only.
	ALX FK 80 XXX 238	80 Storeroom	2 3/8"	
Other functions	N/A	170 Single dummy	N/A	Function kits are not needed for these functions. Order as configured product only.
	N/A	172 Double dummy	N/A	
Locksmith mixed kits	ALX FK LS XXX 234	1 each: 10, 40, 50, 53, 80	2 3/4"	Specify finish: 605, 606, 609, 612, 613, 619, 625, 626 or 643e. Example: ALX FK LS 605 238.
	ALX FK LS XXX 238	1 each: 10, 40, 50, 53, 80	2 3/8"	

## Lever kits (sold in packs of 5)

	Specify	Core options	Design options
Inside lever kits	SCH LP CORE XXX <sup>1</sup> DESIGN	CL (Closed )	SAT RHO ATH SPA TLR LAT LON BRW BRK
		BT (Button)	
Outside lever kits	SCH LP CORE XXX <sup>1</sup> DESIGN	CL (Closed )	SAT RHO ATH SPA TLR LAT LON BRW BRK
		KIL (privacy turns or conventional cylinders)	
		FSIC	RHO ATH SPA TLR LAT LON BRW BRK
		SFIC	
		L SAR (Less cylinder, made to fit Sargent 10L and 11L 6-pin KIL)	
		L CO6 (Less cylinder, made to fit Corbin 8000 6-pin KIL)	
		J SAR (Less cylinder, made to fit Sargent 6300 6-pin FSIC)	RHO ATH SPA TLR
		J CO6 (Less cylinder, made to fit Corbin 8000 6-pin FSIC)	
J CO7 (Less cylinder, made to fit Corbin 8000-7 7-pin FSIC)	RHO		

1. Specify finish: 605, 606, 609, 612, 613, 619, 625, 626 or 643e. Example: SCH LP KIL 626 LAT.

Cylinders and key systems

Administrative Security	Schlage Everest 29™					
	Primus® XP geographically exclusive side bit milling options	Schlage Classic	End user exclusive nationwide	4N		9N
			End user exclusive within time zone/country	4Z		9Z
			End user exclusive within zip code	3G		9G
			End user controlled; non-exclusive	3U		9U
			Dealer exclusive within time zone/country	2		8
			Dealer exclusive within zip code	1+		7
			Authorized dealer only; non-exclusive	1		
End user controlled; non-exclusive						
Authorized dealer only						
No authorization						
<b>OPEN</b> Schlage Classic FSIC and Conventional <ul style="list-style-type: none"> <li>Duplicate anywhere</li> </ul>		<b>OPEN</b> Schlage Everest 29 S FSIC and Conventional <ul style="list-style-type: none"> <li>Patented design</li> <li>Check pin in cylinder</li> </ul>		<b>RESTRICTED</b> Schlage Everest 29 R <sup>1</sup> FSIC, FSIC <sup>2</sup> and Conventional <sup>2</sup> Schlage Everest 29 T FSIC and Conventional <ul style="list-style-type: none"> <li>Requires letter of authorization</li> <li>Patented design</li> <li>Check pin in cylinder</li> </ul>		
		<b>Primus XP RESTRICTED</b> Schlage Classic FSIC and Conventional <ul style="list-style-type: none"> <li>5 levels of side bit milling exclusivity</li> <li>Patent protection to 2024</li> <li>Independent sidebar and finger pin locking mechanisms</li> </ul>		<b>Primus XP RESTRICTED</b> Schlage Everest 29 R FSIC <sup>2</sup> and Conventional <sup>2</sup> Schlage Everest 29 S FSIC and Conventional Schlage Everest 29 T FSIC and Conventional <ul style="list-style-type: none"> <li>5 levels of side bit milling exclusivity</li> <li>Patent protection to 2029</li> <li>Independent sidebar and finger pin locking mechanisms</li> </ul>		
				<b>UL 437 Option</b> UL listed high-security option available for Primus XP Conventional cylinders <ul style="list-style-type: none"> <li>Hardened steel drill pins</li> <li>Proven pick and drill resistant</li> <li>Withstands extreme physical attack</li> </ul>		
<b>Physical Security</b>						
<b>COMPARABLE ELECTRONIC SECURITY</b> – Ensure your credential is as secure as your keyway						
Proximity credentials <ul style="list-style-type: none"> <li>Easily duplicated</li> </ul>		MIFARE Classic® smart credentials <ul style="list-style-type: none"> <li>Secure encrypted data and communications</li> <li>Difficult to duplicate</li> </ul>		MIFARE Plus® and MIFARE® DESFire® EV1 smart credentials <ul style="list-style-type: none"> <li>Advanced data encryption makes duplication nearly impossible</li> <li>Most secure credentials available from Schlage</li> </ul>		

1. Limited dealer controlled programs available.  
 2. FSIC and Conventional in the form of SL cylinders that accept an SFIC key.

## Primus® XP access control and high security cylinders

The Primus® XP program is designed to allow the highest levels of security to be applied in buildings on doors where it counts most but still within a single keyway family making it easy to manage. Distribution of both cylinders and keys is tightly controlled and patent protection ensures keys cannot be copied.

Most facilities need higher levels of key control and physical security on at least a few openings. Large businesses with high-risk assets will want to apply the greatest precautions and may opt for end user controlled Primus XP cylinders with keys milled for their exclusive use on a national or regional basis. Mid-size and smaller facilities can gain the same benefits of key control on a more local level by engaging a locksmith who offers dealer exclusive Primus XP products. Buildings keyed to a Classic open keyway can upgrade security to Primus XP at critical points of entry to improve overall security.

**Visit us.allegion.com for more information.**

## Primus XP program enhancements

- Enhanced physical security with patented independent, dual locking mechanisms
- Patent protection and unique key design makes unauthorized duplication nearly impossible
- Geographically exclusive key distribution
- Compatible to all Everest 29 and legacy Everest keyways
- Optional UL 437 listed cylinders are made to withstand extreme attack

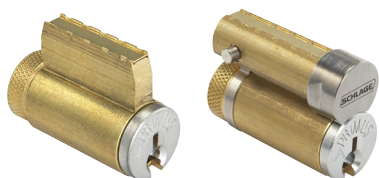


## Cylinders and key systems

# Cylinders and key systems

A strong lock is only part of the security solution—proper key control is equally important. Schlage offers extensive options to meet the security needs of the specific project.

## Cylinders



### Conventional (KIL) and Full Size Interchangeable Core (FSIC) cylinder options<sup>1</sup>

- 6-pin large format keying (standard)
- 7-pin small format keying (A2 pinning) available in SL cylinders
- 6-pin available in Schlage Classic and Everest 29 S and T keyway families plus supported legacy keyways
- Primus XP security features and geographic exclusivity
- Primus XP UL 437 listed high-security cylinders

<sup>1</sup> Available in 606, 622, 626 and 643e plug face finishes; Everest 29 S123 keyway standard.

<sup>2</sup> Available 606, 613 (simulated), 622, 626 and 643e plug face finishes.

<sup>3</sup> Restricted keyway cores require authorization from the end user.



### Small Format Interchangeable Core (SFIC) cylinder options<sup>2</sup>

- 7-pin small format keying (A2 pinning)
- Available in Schlage Everest 29 R and legacy, Everest B restricted keyway families<sup>3</sup>

### SL format cylinders

- Same A2 pinning style as SFIC cylinders but in Conventional and FSIC formats
- Enables an Everest 29 R or Everest B keyway facility to gain Primus XP program security

## Key systems

### Everest 29 keyway families

- Patented through 2029
- Key duplication is restricted providing a higher level of administrative security
- Can be integrated into an existing legacy Everest key system
- Upgradeable to Primus XP and UL 437 levels of security

### Classic keyway family

- Open keyway—keys are duplicated and available without ordering formalities
- Upgradeable to Primus XP and UL 437 levels of security

### Legacy keyway families

- Patent expired keyway families include legacy Everest, Quad, Numbered and Reversed
- Everest and Quad are upgradeable to Primus XP and UL 437 cylinders to regain patent and key control protection for critical points of entry



## Cylinder options

### Conventional cylinders (Schlage keyways)

When ordering as part of a configured lock, specify cylinder suffix in the product number as directed on page 12. The "L" less cylinder option also requires that you note the desired cylinder part number under the "other requirements" section of the order string. For kitted product orders simply order desired part number(s) as individual line items.

Configured lock specification	Sold separate part number	Tailpiece only	Functions	Pins	Cylinder mechanism
P, P6	21-020	A700-031	50, 53, 80	5, 6	Pin and tumbler (standard)
	23-195	47270197	70		
Z	91-018	N523-022	50, 53, 80	7	SL cylinder (restricted Everest 29R or Everest B only)
	91-118	47270197	70		
L	20-765	N523-022	50, 53, 80	6	Primus
	20-685	47270197	70		
L	20-565	N523-022	50, 53, 80	6	Primus UL 437 (UL listed high security)
	20-566	47270197	70		
L	91-718-XP	N523-022	50, 53, 80	7	SL cylinder PrimusXP (restricted Everest 29R or Everest B only)
	91-118-XP	47270197	70		
L	20-765-XP	N523-022	50, 53, 80	6	Primus XP
	20-685-XP	47270197	70		
L	20-565-XP	N523-022	50, 53, 80	6	Primus XP UL 437 (UL listed high security)
L	20-566-XP	47270197	70		

Note: Specify keyway and plug face finish when ordering as parts (606, 622, 626, or 643e).

### Interchangeable cores (Schlage keyways)

When ordering as part of a configured lock, specify cylinder suffix in the product number as directed on page 10. The "J" less cylinder option also requires that you note the desired cylinder part number under the "other requirements" section of the order string. For kitted product orders simply order desired part number(s) as individual line items.

Configured lock specification	Sold separate part number	Tailpiece only	Functions	Pins	Cylinder mechanism
R	23-030	N523-127	50, 53, 80	6	FSIC pin and tumbler (standard FSIC)
		47269168	70		
M	91-161	N523-127	50, 53, 80	7	FSIC Everest SL (restricted Everest 29R and Everest B only)
		47269168	70		
J	20-740	N523-127	50, 53, 80	6	Primus FSIC
		47269168	70		
J	91-861	N523-127	50, 53, 80	7	FSIC SL Primus (restricted Everest 29R and Everest B only)
		47269168	70		
T	23-030-ICX	N523-127	50, 53, 80	6	FSIC refundable construction core - color coded
		47269168	70		
G	80-037	N523-091	50, 53, 80	7	SFIC combined Everest 29 R family keyway (standard SFIC)
		47269620	70		
H	80-035	N523-091	50, 53, 80	7	SFIC refundable construction core - color coded
		47269620	70		

Note: Specify plug face finish when ordering as parts: 606, 622, 626 or 643e.

## Options for configured or kitted locks

### Available less cylinder options made to fit competitive cores

When ordering as part of a configured lock, specify cylinder suffix in the product number as directed on page 10. For kitted product orders simply order desired part number(s) as individual line items.

Cylinder suffix	Tailpiece	Functions	Made to fit	Applicable levers
L-SAR	09-060	50, 53, 80	Sargent 10L and 11L, 6-pin KIL	ATH, RHO, SPA, TLR
L-CO6	10-140	50, 53, 80	Corbin 2000, 6-pin KIL	ATH, RHO, SPA, TLR
J-SAR	09-063	50, 53, 80	Sargent 6300, 6-pin FSIC	ATH, RHO, SPA, TLR
J-CO6	09-062	50, 53, 80	Corbin 8000, 6-pin FSIC	ATH, RHO, SPA, TLR
J-CO7	10-141	50, 53, 80	Corbin 8000-7, 7-pin FSIC	RHO

### Multiple tailpiece cylinder kits

Each kit contains a Conventional cylinder with tailpieces to fit any of these series locks: A, AL, ALX, D and ND.

Keyway families	Cylinder mechanism	Part number	Description
Classic, Everest and Everest 29	Standard pin and tumbler	40-100	1 preassembled, 0-bitted Conventional cylinder, 4 tailpieces, 2 key blanks
	Primus	40-700	40-700 XP
	Primus UL 437	40-500	40-500 XP

### 10-piece economy bulk pack cylinders

Keyway families	Cylinder mechanism	Conventional	FSIC	Description
Classic	Standard pin and tumbler	09-409	09-411	Contains 10 each: shells (loaded), plugs, caps, cap pins, cap pin springs, check pins, and check pin springs. FSIC bulk packs also include 10 each: actuating rings, actuating pins, and control pins.
	Primus / Primus XP	09-833	09-753	
Everest and Everest 29	Standard	09-751	09-766	
	Primus / Primus XP	09-764	09-836	

### 10-piece economy bulk pack tailpieces

Keyway families	Cylinder mechanism	Part number	Description
Classic, Everest and Everest 29	N/A	09-416	10 ND/ALX A700-031 tailpieces

## Keyways

Locks are furnished with Everest 29 S123 keyway (KD) unless otherwise specified.

	Specify	Primus option available	UL 437 option available	Conventional		FSIC		SFIC	Description
				Std	SL	Std	SL		
Open keyways	Everest 29 Sxxx <sup>1</sup>	■	■	■	■	■	■		Patented design, check pin in cylinder.
	Everest Cxxx <sup>1</sup>	■	■	■	■	■	■		Legacy keyway no longer under patent, upgradeable to Everest 29.
	Classic Obverse	C, CE, E, EF F, FG, G	■	■	■	■	■		Readily duplicated open keyway (integration of Primus XP on critical points of entry recommended).
Restricted keyways	Everest 29 Txxx <sup>1</sup>	■	■	■		■			LOA <sup>2</sup> required, patented design, check pin in cylinder.
	Everest 29 Rxxx <sup>1</sup>	■				■	■		
	Everest Dxxx <sup>1</sup>	■	■	■		■			LOA <sup>2</sup> required, legacy keyway no longer under patent, upgradeable to Everest 29.
	Everest Bxxx <sup>1</sup>	■				■	■		

1. Everest 29 and Everest legacy keyway families each have 10 available keyways are always denoted by the letter followed by 3 numbers (example S123).

2. LOA = Letter of Authorization required at time of order.



## Product specifications

Schlage ALX Series mechanical specifications		
Chassis	Material	Zinc and steel, zinc dichromate plated for corrosion resistance
	Door thickness	Standard: 1 3/8" to 1 3/4" + .012 to accommodate wrap
	Functions	9 available functions with Vandlgard field configurable option on locking functions
Trim	Handing	Non-Handed
	Levers	Standard: 10 designs, pressure cast zinc, plated to match product finish specification Optional: Tactile feature - Milled levers: Athens (8AT); Latitude (8LT); Longitude (8LN); Rhodes (8RO); and Sparta (8SP). Knurled levers: Boardwalk (8BK); Broadway (8BW); and Tubular (8TR)
	Roses	Wrought brass, bronze or zinc plated to match finish specification Standard: 3 7/16" diameter. Blank outside rose is 3 1/2" diameter
Latches	Finishes	10 available: 605, 606, 612, 613, 619, 622, 625, 626, 626AM, 643e
	Backset	Standard: 2 3/4" Optional: 2 3/8", 3 3/4", 5"
	Faceplate	Standard: 1 1/8" x 2 1/4" square corners Optional: Multiple options with square or radius corners (see page 11 for details)
Cylinders	Bolt	Standard: 7/8" bolt diameter, up to 1" housing diameter, 1/2" throw in Stainless Steel Optional: 1" bolt diameter with 1/2" throw, 3/4" anti-friction fire latch
	Strike	Standard: ANSI Curved Lip: 1 1/4" x 4 7/8" x 1 3/16" Optional: T strike (see page 11 for details)
	Format	Standard: Conventional 6-pin in solid brass Optional: Full size and small format IC cylinders
Keying	SL option	7-pin Conventional and FSIC format cylinders using small format A2 pinning that share SFIC cylinder's Everest 29R restricted keyway
	Construction options	Conventional: Cylinders can be ordered as "construction" and will be shipped with a split key and separately packaged change keys FSIC and SFIC: Cylinders can be purchased as returnable/refundable cylinders and SFIC is also offered as a disposable cylinder
	Less cylinder	Options to fit Schlage Primus and 5 competitive cylinders
Warranty	Keyway	Standard: Everest 29 S123 patented open keyway, keyed different (KD) Optional: Classic open, Everest 29 restricted, and legacy keyways
	Enhanced security options	Primus XP program and factory master keying
Certifications	Warranty	10-year limited
	ANSI/BHMA	Certified A156.2-2011 Series 4000, Grade 2; exceeds standard for lever and spindle strength and durability
	ICC	Complies with ICC A117.1 for Accessible and Usable Buildings and Facilities
	UL/cUL	All locks listed for A label single fire door 4' x 8' for 3-hours. Upgrade options available to achieve 4' x 10' 3-hour; pair doors 8' x 8' 3-hour; and 8' x 10' 90-minute. Letter F and UL symbol on latch front indicate listing.
	UL 437	Optional UL listed high-security cylinders available in Conventional format
	CA Fire Code	All levers with a return to door of 1/2" (64 mm) or less comply (Boardwalk, Longitude, Omega, Rhodes, Saturn, Sparta, and Tubular)
	FL Building Code	ASTM E1886 and E1996 impact and cycle/Miami-Dade equivalent TAS 201 and TAS 202. ASTM E330 static load/Miami-Dade equivalent TAS 202.
	Federal	Meets FF-H-106C Series 161
ADA compliant	All lever designs meet Americans with Disabilities Act requirements	

### Architectural specifications

- A. Requirements:
1. Provide Schlage ALX Series cylindrical locks conforming to the following standards and requirements:
    - a. ANSI/BHMA A156.2 Series 4000, Grade 2.
    - b. UL 10C listed for 4' x 8' 3-hour fire door.
    - c. **OPTION** – UL 10C for 4' x 10' 3-hour fire door.
    - d. **OPTION** – UL 10C for 8' x 8' 3-hour fire door.
    - e. **OPTION** – UL 10C for 8' x 10' 90-minute fire door.
    - f. **OPTION** – Florida Building Code (ASTM E330, E1886, E1996) and Miami Dade (TAS 201, 202) requirements for hurricanes.
  2. Provide cylindrical locks exceeding the ANSI/BHMA A156.2 Grade 1 performance standards for strength and durability in the categories below:
    - a. **Cycle life** – minimum of 1.0 million cycles:
      - 1) With no visible lever sag.
      - 2) Without the use of performance aids (e.g. set screws, spacers, etc.)
    - b. **Abusive locked lever torque** – minimum of 1,000 inch-pounds without gaining access.
  3. Provide locksets with **solid cast levers** and **wrought roses** on both sides:
    - a. Lever design: Athens, Broadway, Boardwalk, Latitude, Longitude, Omega, Rhodes, Saturn, Sparta or Tubular.
    - b. Rose design: Rhodes (all levers except Omega) or Omega (only with Omega lever).
    - c. **OPTION** (where required by Authority Having Jurisdiction) – Provide tactile warning (knurling) on levers for either side of the door for areas considered to be hazardous.
    - d. **OPTION** – Provide either Vandlgard or non-Vandlgard exterior levers on any locking function without use of extra components.
  4. Provide locks with standard 2 <sup>3</sup>/<sub>4</sub>" (70 mm) backset, unless noted otherwise, with 1/2" latch throw. Provide 3/4" latch throw for UL listing at pairs.
  5. **OPTION** – Provide latch options featuring a 2 <sup>3</sup>/<sub>8</sub>" and 3 <sup>3</sup>/<sub>4</sub>" backset with a 1/2" latch throw.
  6. Provide locksets with **solid steel anti-rotation** through bolts and posts to control excessive lever rotation.
  7. Provide **independently operating levers** with two external return spring cassettes mounted under roses to prevent lever sag.
  8. Provide a minimum of **5 points of lever engagement** between the cassette spindle and lever shank to prevent lever sag.
  9. Provide standard ASA strikes unless extended lip strikes are required to protect trim.
  10. **OPTION** – Provide RX functionality on any latched function.
  11. **OPTION** – Plug-n-Play. Provide modular lockset allowing lock functions to be created for 7 typical functions by inserting/installing parts into the exterior of a fully assembled chassis.
  12. **OPTION** – Reconfigurable chassis. Provide modular lockset that allows the function to be reconfigured by removing external trim and performing a simple function component replacement.

## About Allegion

Allegion (NYSE: ALLE) is a global pioneer in seamless access, with leading brands like CISA®, Interflex®, LCN®, Schlage®, SimonsVoss® and Von Duprin®. Focusing on security around the door and adjacent areas, Allegion secures people and assets with a range of solutions for homes, businesses, schools and institutions. Allegion had \$2.7 billion in revenue in 2018, and sells products in almost 130 countries.

For more, visit [www.allegion.com](http://www.allegion.com).

KRYPTONITE ■ LCN ■  ■ STEELCRAFT ■ VON DUPRIN