



18503

6030 Series

LCN®

Installation Instructions

Fig. 1

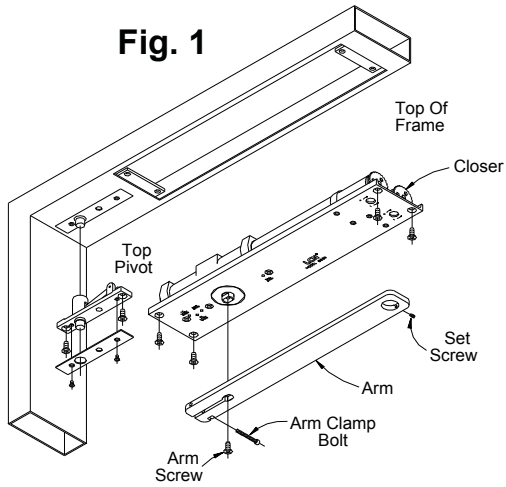


Fig. 3

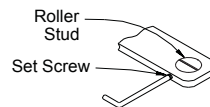
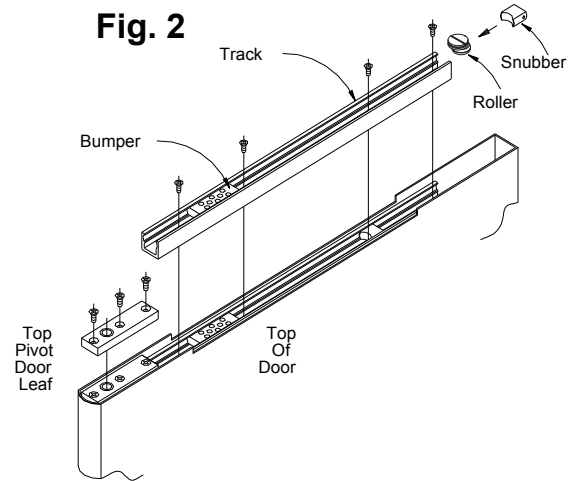


Fig. 2



1

Prepare door and frame to receive pivot and closer, per templates on pages 2 and 3. Install pivot and closer.

2

Door should now be hung on pivots. Refer to pivot installation sheet for details.

3

Attach arm to closer shaft with arm screw. Tighten screw securely.



Closer arm is under strong pressure to return. Hold it firmly during the next step.

4

Open door to 45°. Pull arm toward door and slide roller stud under hole in arm. Install stud in arm with slot crosswise as shown in FIG. 3. Turn set screw in just enough to retain roller stud, but do not tighten firmly. Allow door to close, and with arm horizontal, tighten arm clamp bolt (at shaft end of arm) with hex key provided.

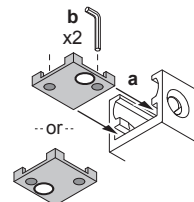
5

Closed door should be centered in frame. If not, open door part way and rotate roller stud about an eighth of a turn, using a screwdriver. (Set screw may need to be backed out slightly.) Repeat as needed till centered as required. When satisfied, tighten arm set screw securely. (When doors are paired, adjust both until edges match.) Open door, slide snubber into track at least 6" in from end. Allow door to close. This will automatically position the snubber correctly.

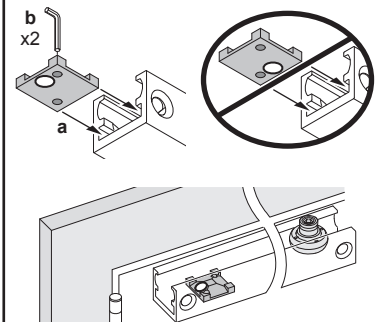
6 Hold-Open Information

HOLD-OPEN OPTION

LIGHT HOLD-OPEN FORCE



STRONG HOLD-OPEN FORCE



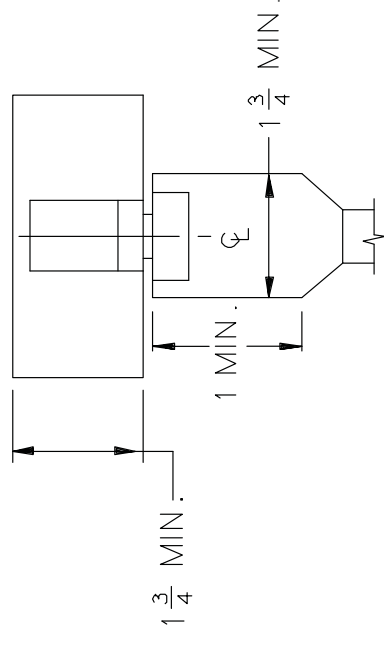
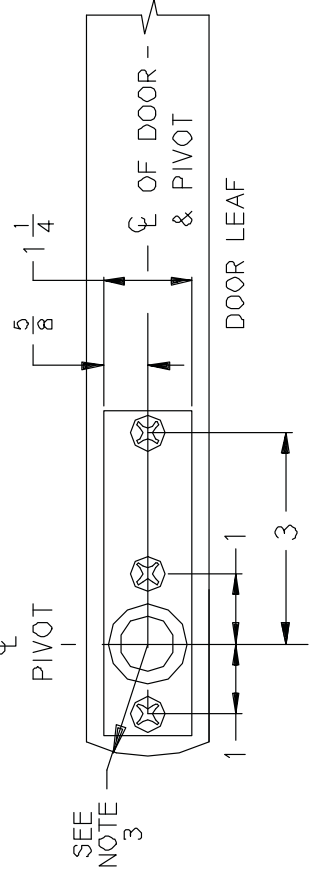
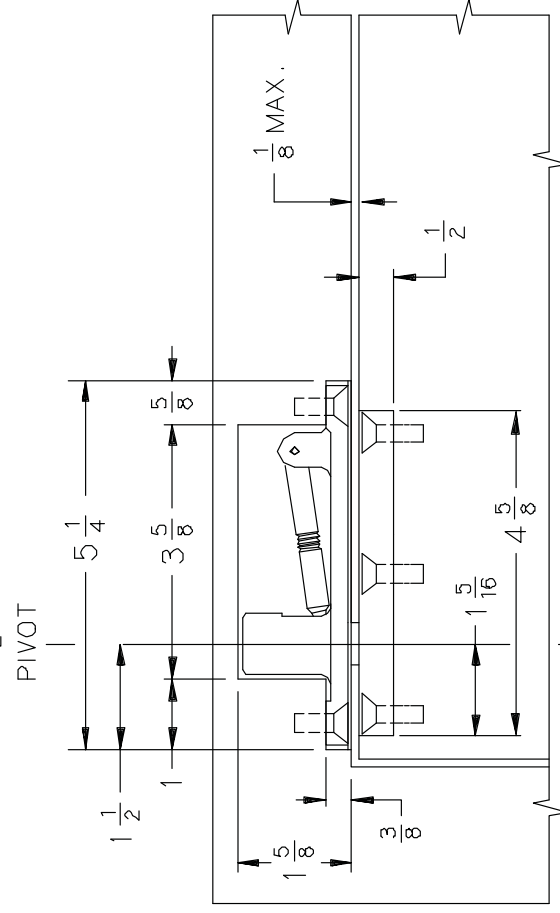
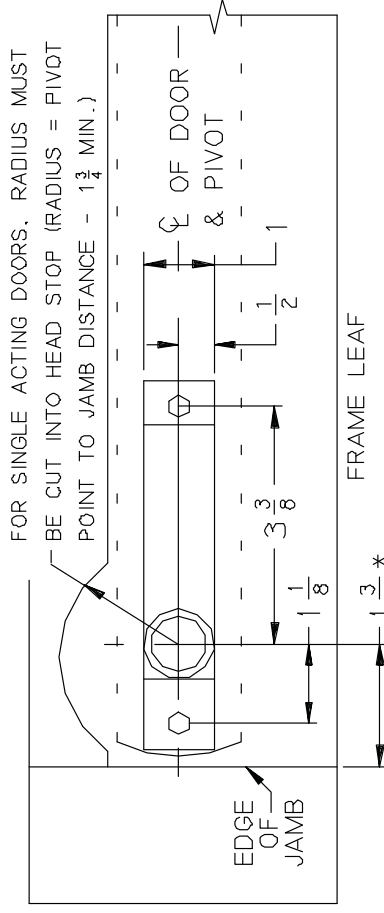
7250-3101 TOP CENTER PIVOT

RIGHT HAND DOOR AND PIVOT
SHOWN, LEFT HAND OPPOSITE

11/96

NOTES:

1. INSTALLER MUST VERIFY THAT CENTERLINE OF TOP PIVOT POINT LINES UP WITH CENTERLINE OF BOTTOM PIVOT POINT.
2. RADIUS OF HEEL EDGE OF DOOR MUST NOT EXCEED PIVOT POINT TO JAMB DISTANCE. STANDARD 2" RADIUS IS SHOWN.
3. PIVOTS MANUF. TO ACCEPT $\frac{1}{4}$ " - $20 \times \frac{3}{4}$ " SS PHMS OR OPTIONAL No. 14 x $1 \frac{1}{2}$ " PHWS.
- * 4. PIVOT CENTER MAY BE VARIED AS DESIRED. MINIMUM DISTANCE IS $1 \frac{3}{4}$ " AS SHOWN.
5. REINFORCING PER ANSI/SOI-100 RECOMMENDED FOR HOLLOW METAL DOORS & FRAMES.

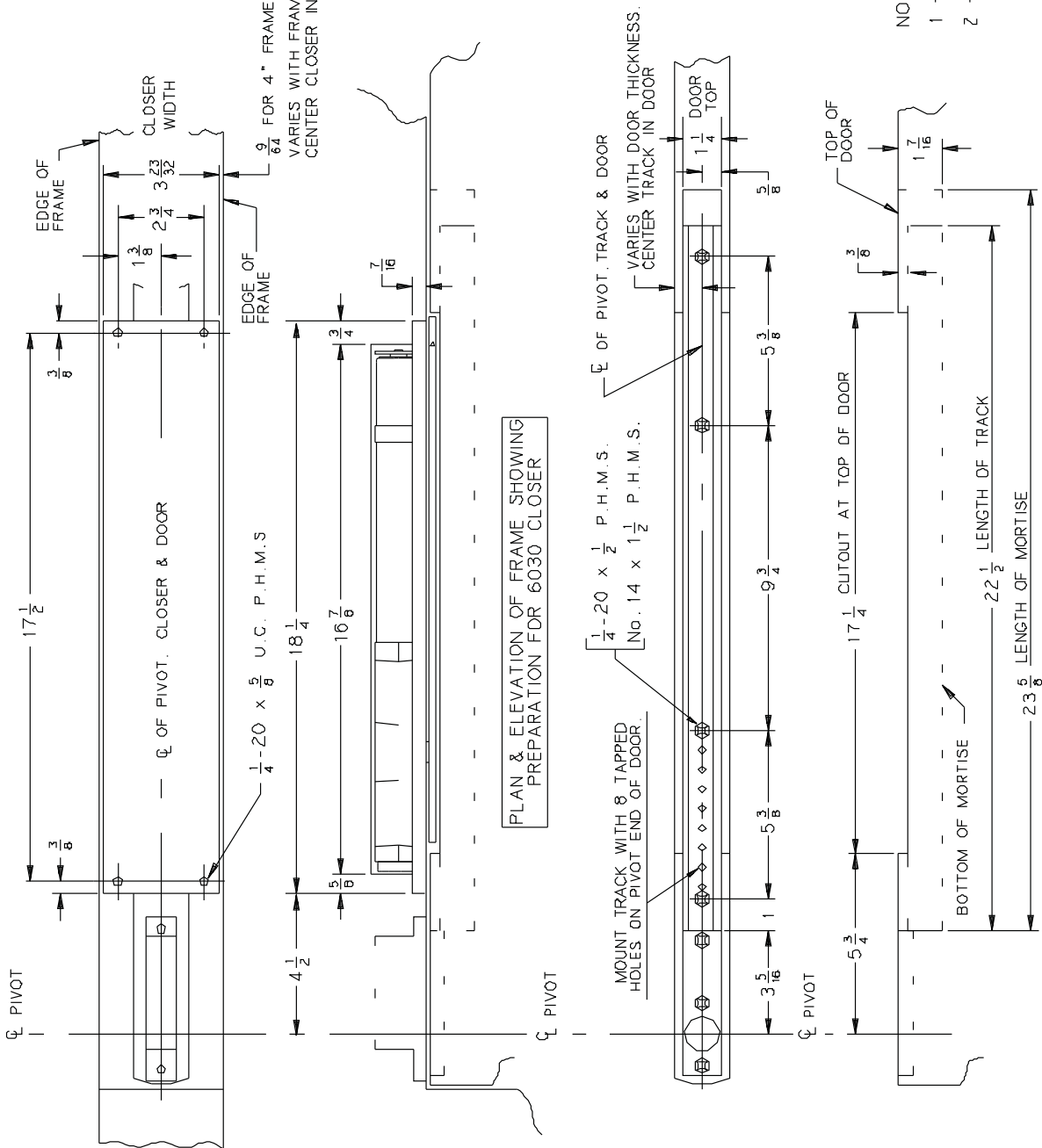


INCH	$\frac{1}{8}$	$\frac{1}{4}$	$\frac{3}{8}$	$\frac{1}{2}$	$\frac{5}{8}$	$\frac{3}{4}$	1	$1\frac{1}{8}$	$1\frac{1}{4}$	$1\frac{5}{16}$	$1\frac{1}{2}$	$1\frac{5}{8}$	$1\frac{3}{4}$	3	$3\frac{3}{8}$	$3\frac{5}{8}$	$4\frac{5}{8}$	$5\frac{1}{4}$
M.M.	3	6	10	12	16	19	25	29	32	33	38	41	44	76	⁸⁵ 92	117	133	133

No	REVISION	BY	DATE	APP	BY	CTB	11/96
Q	NEW TEMPLATE	CTB	9/96				
1	REVISED TEMPLATE	AMM	9/99	TOP CENTER PIVOT, USED IN SETS: 7253, 7255, 7255J & 7256			
				7250-3101 TOP PIVOT			

6031-CP	NON HOLD OPEN (UP TO 95°) 6032-CP } H-90 (80° TO 95°) 6033-CP } MAX. OPENING 95° 6034-CP } 6035-CP }
AUXILIARY STOP RECOMMENDED	
CONCEALED DOUBLE ACTING CLOSER	
6/96	

PIVOT, DOOR, TRACK AND CLOSER MUST ALL USE SAME CENTERLINE.



- NOTES :
- 1 - 1/8" DOOR TO SOFFIT CLEARANCE REQUIRED.
 - 2 - REINFORCING PER ANSI/SDI-100 RECOMMENDED FOR HOLLOW METAL DOOR AND FRAMES.

PLAN & ELEVATION OF TOP OF DOOR SHOWING PREPARATION FOR CLOSER TRACK

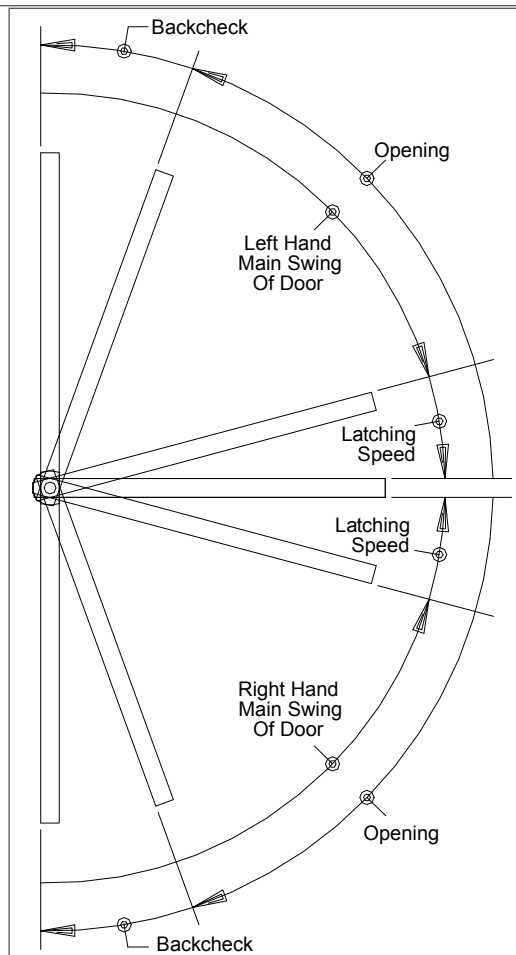
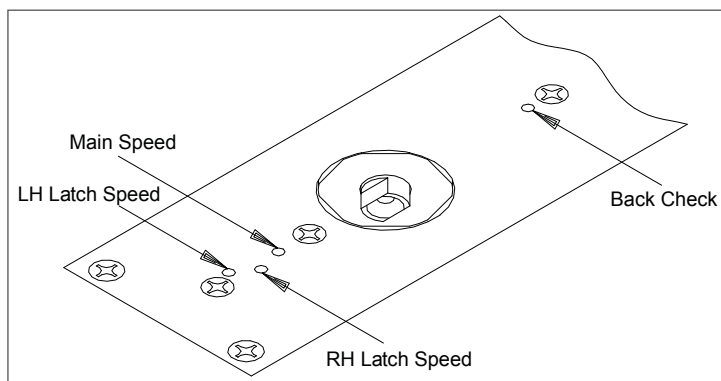
inch	3/8	1/2	5/8	3/4	7/8	1	1 1/8	1 1/4	1 1/2	1 5/8	1 3/4
mm	3	4	6	10	11	13	16	19	25	32	35
inch	2 3/4	3 1/4	3 3/4	4	4 1/4	4 3/4	5 1/4	5 3/4	6 1/4	6 3/4	7
mm	70	83	84	94	102	114	137	146	164	170	178

No.	REVISION	BY	DATE	APP BY
1	CAD CONVERSION	CTB	8/93	JEJ 6/96
2	TEMPLATE UPDATE	JEJ	6/96	DO NOT SCALE
3	REMOVED PIVOT INFO.	AMM	5/01	

6030-CP

Regulation:

1. To regulate main swing speed: There is one main swing speed adjusting screw for both swings of door. If adjustment is required, turn screw clockwise to slow down main swing of door. To speed up main swing, turn screw counterclockwise. A normal closing time from 90° open position is 5 to 7 seconds, evenly divided between main swing speed and latch swing speed. Use a $\frac{3}{32}$ " hex wrench.
2. To regulate latch swing speed: There are two latch swing speed adjusting screws. Refer to diagram to identify hand of swing, and use screw marked LH (left hand) or RH (right hand). If adjustment is required, turn appropriate screw clockwise to slow down latch swing. To speed up latch swing, turn screw counterclockwise.
3. To adjust backcheck intensity: There is one backcheck adjustment screw for both swings of door. Adjust to lightest backcheck that will retard door opening speed during the last few degrees of opening.
CAUTION: Do not set an abrupt backcheck or expect closer to act as a door stop. To increase backcheck, turn screw clockwise. To reduce backcheck, turn screw counterclockwise.



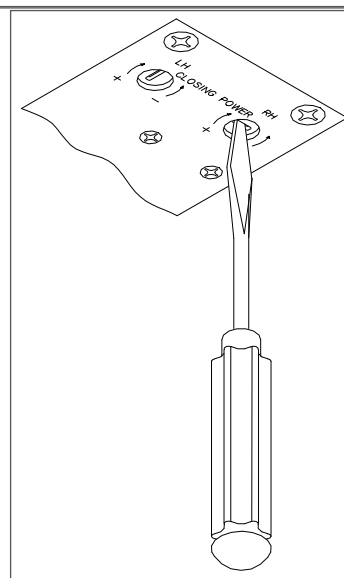
**IMPROPER INSTALLATION OR REGULATION MAY
RESULT IN PERSONAL INJURY OR PROPERTY DAMAGE.
FOLLOW ALL INSTRUCTIONS CAREFULLY. FOR
QUESTIONS, CALL LCN AT
877-671-7011**

Closing Power Adjustment

Closer is shipped with minimum closing power, and power of each swing can be individually increased. To adjust, use spring adjustment screw that corresponds with hand of swing in regulation diagram. To increase, turn screw clockwise. Maximum adjustment is 36 turns.

Table of Sizes		
Maximum width of doors		Catalog No. of Closer
Exterior	Interior	
----	38" (965 mm)	6033
36" (900 mm)	48" (1220 mm)	6034
42" (1065 mm)	54" (1370 mm)	6035

① **NOTE: Specify next higher closer where strong drafts exist.**

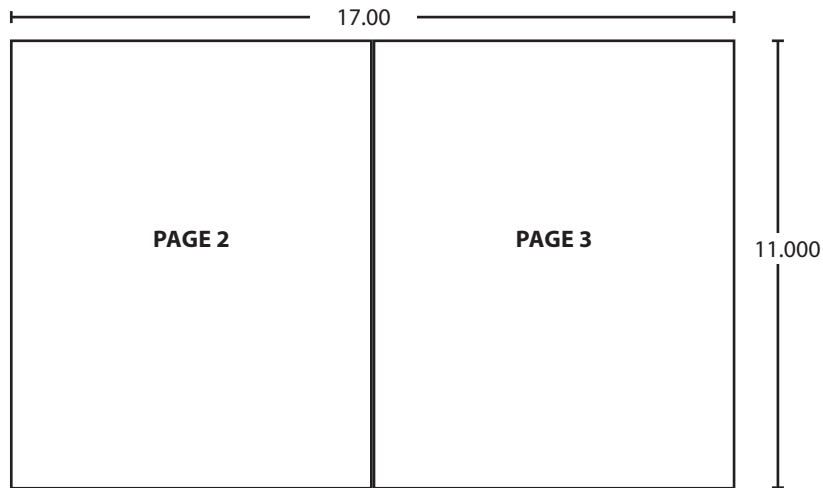


Customer Service

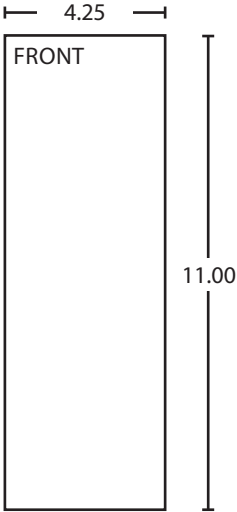
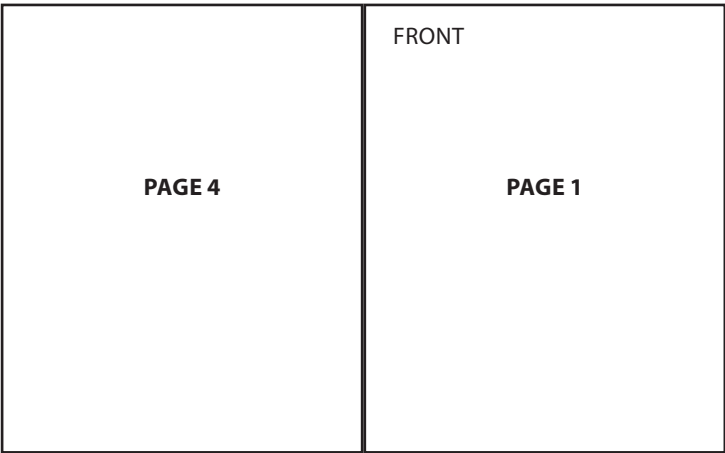
1-877-671-7011 www.allegion.com/us



© Allegion 2015
Printed in U.S.A.
18503 Rev. 10/15-j



BEGINNING SHEET



FOLDED SHEET

Additional Notes:
1. None

Revision History						Revision Description: J > Revised artwork						
H	J	K	L	M	N							
043228												
Material White Paper						Edited By		Approved By		EC Number	Release Date	
						J. Ellis		J. Pattar		xxxxxx	10-20-15	
Notes 1. printed two sides 2. printed black 3. tolerance ± .13 4. printed in country may vary 5. drawings not to scale						Title 6030 Series Instruction Sheet						
						Creation Date 05-10-10		Number 18503			Revision J	
						Created By N/A		Activity 3899 Hancock Expwy Security, CO 80911		© Allegion 2015		
								Software: InDesign CS6				