



The 1250 Series cast aluminum closer is designed for low-frequency and low abusive traffic areas. This cast aluminum closer is ideal for aluminum storefronts, interior offices and many other applications. Combining dependable operation, low maintenance and a patented stylish look - with or without the optional slim line cover. And with the most common hole pattern in the industry, the 1250 Series is the perfect choice for easy aftermarket replacement.

<b>Certifications</b>	Grade 1 - ANSI A156.4, UL 10C, ADA, 100 Hour Salt Spray, Meets BAA - Buy American Act	<b>Cover</b>	■ Slim Line Cover, Optional
<b>Body Construction</b>	<ul style="list-style-type: none"> <li>■ Cast Aluminum Body</li> <li>■ Full Complement Bearing</li> <li>■ 1-3/8" Diameter Piston</li> <li>■ 5/8" Diameter Single Heat Treated Pinion Journal</li> </ul>	<b>Fasteners</b>	Universal Screw Pack (UNIV)
<b>Fluid</b>	All Weather Fluid	<b>Mounting</b>	Hinge (Pull Side), Top Jamb (Push Side), Parallel Arm (Push Side)
<b>Handing</b>	Non-Handed	<b>Arms</b>	Tripack includes Regular, Top Jamb, and Parallel Arm (Rw/PA)
<b>Templating</b>	Peel-n-Stick templates - 3/4" x 9-1/16" Mounting Hole Pattern	<b>Finishes/Colors/ Powder Coat</b>	<ul style="list-style-type: none"> <li>■ Aluminum (689)</li> <li>■ Statuary Bronze (690)</li> <li>■ Light Bronze (691)</li> <li>■ Black (693)</li> <li>■ Dark Bronze (695)</li> <li>■ Brass (696)</li> <li>■ Custom colors optional</li> </ul>
<b>Size</b>	Adjustable Spring Size 1-5		■ Optional SRI primer - powder coat only
<b>Warranty</b>	15 years		

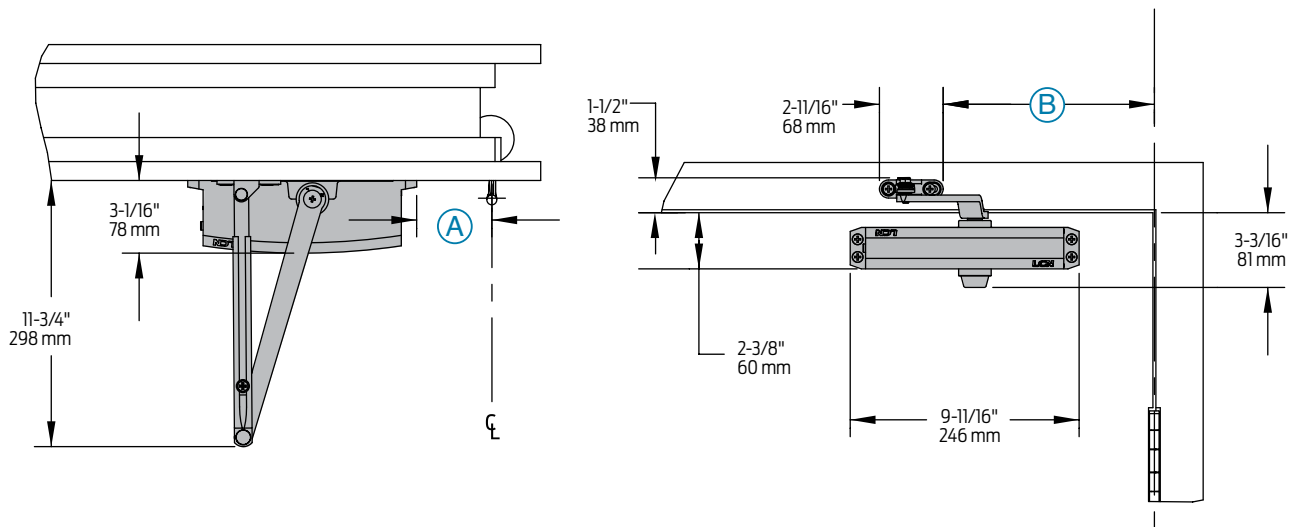
### Special Templates

Customized installation templates or products may be available to solve unusual applications. Contact LCN Product Support for assistance.

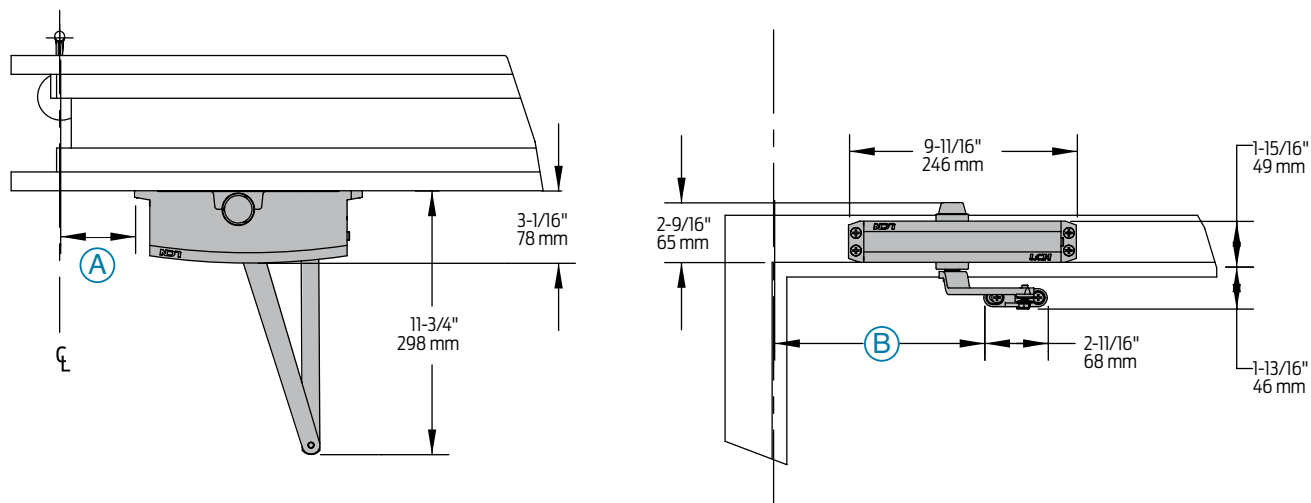
MOUNTING	FINISH	COVER	CYLINDER	*ARM FUNCTION
HINGE (PULL SIDE)	PAINT	NON-HANDED	REGULAR (DOUBLE)	180°
TOP JAMB (PULL)	POWDER COAT	NON-SIZED	STANDARD (SINGLE)	180°
TOP JAMB (PUSH)	PLATED	ACCESSIBILITY	HEAVY DUTY	180°
PARALLEL ARM	PLASTIC	DELAYED ACTION	HOLD-OPEN	110°
STOP FACE	METAL		EDA/HEDA	110°
			CUSH/HCUSH	
			SCUSH/SHCUSH	

● AVAILABLE  
 ○ NOT AVAILABLE

♿ Closer available with less than 5.0 lbs. opening force on 36" door.  
 \* Maximum opening/hold-open point with standard template.



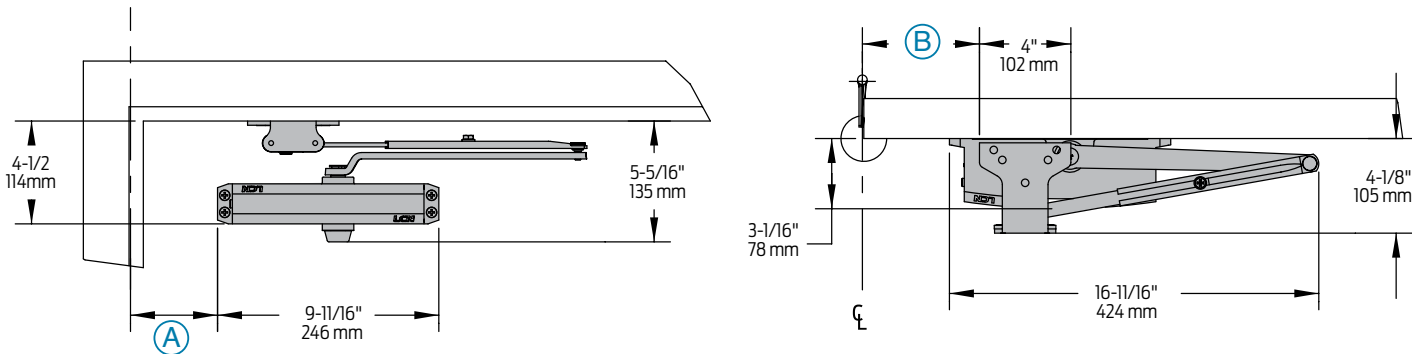
Butt Hinges	Should not exceed 5" (127 mm) in width	
Auxiliary Stop	Recommended at hold-open point or where a door cannot swing 180°	
Reveal	Should not exceed 3/4" (19 mm) for regular arm or 1/2" (13 mm) for hold-open arm	
Top Rail	Less than 2-3/8" (60 mm) requires PLATE, 1250-18	
Clearance	3-1/16" (78mm) behind door required for installation.	
Maximum opening	100°:	A = 6-11/16" (170mm) B = 12-7/16" (316 mm)
	101° to 120°:	A = 5-11/16" (144mm) B = 11-7/16" (291 mm)
	or *121° to 180°:	A = 3-1/16" (78 mm) B = 8-15/16" (227 mm)
	Hold-open points up to maximum opening with hold-open arm *Frame and trim permitting.	



<b>Butt Hinges</b>	Should not exceed 5" (127 mm) in width		
<b>Auxiliary Stop</b>	Recommended at hold-open point or where a door cannot swing 180°		
<b>Reveal</b>	Arm Type	Maximum Reveal	Opening
	Regular Arm	0" to 5"	180°
	Long Arm	4" to 8"	165°
	Hold-Open Arm	0" to 2-3/4"	180°
	Long Hold-Open Arm	2" to 6-1/2"	180°
<b>Top Rail</b>	Requires 1-3/4" (44 mm) minimum. 2-1/2" (64 mm) minimum with closer on PLATE, 1250-18		
<b>Head Frame</b>	Less than 1-3/4" (44 mm) requires PLATE, 1250-18. For flush ceiling condition with 2" (51 mm) head frame, use PLATE, 1250-18. (Plate requires 1-3/8" (35 mm) minimum.)		
<b>Maximum opening</b>	100°:	A = 7-3/16" (183 mm) B = 12-15/16" (329 mm)	
	101° to 120°:	A = 5-11/16" (144 mm) B = 11-7/16" (291 mm)	
	or *121° to 180°:	A = 3-1/16" (78 mm) B = 8-15/16" (227 mm)	
	Hold-open points up to maximum opening with hold-open arm *Frame and trim permitting.		

Mounting details

Parallel Arm  
(Push Side) Mounting

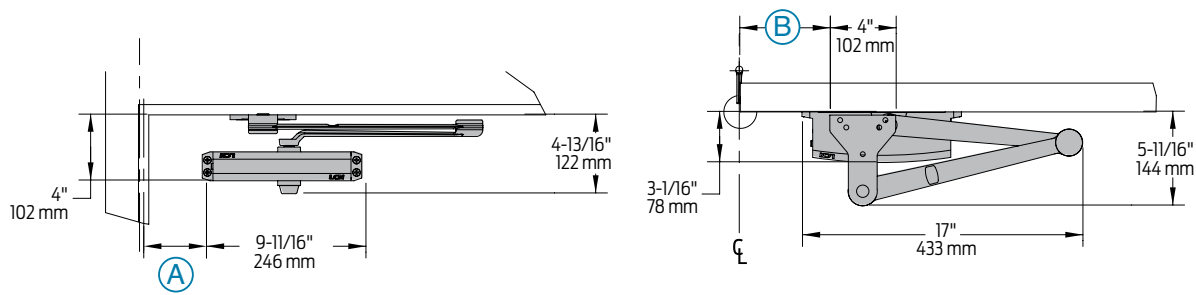


The 'A' dimension refers to the edge of the closer body to the center line of pivot or hinge.  
The 'B' dimension refers to the edge of the closer shoe bracket to the center line of pivot or hinge.

Butt Hinges	Should not exceed 5" (127 mm) in width
Auxiliary Stop	Recommended at hold-open point, where a door cannot swing 180°, or where CUSH-N-STOP arm is not used
Top Rail	Less than 4-1/2" (114 mm) measured from the stop requires PLATE, 1250-18PA
Clearance	1250-62PA shoe projects 4-1/8" (105 mm) from door face
Stop Width	Minimum 1" (25 mm)
Blade Stop	Clearance, requires 1/2" (13 mm) BLADE STOP SPACER, 1250-61
Auxiliary Shoe	1250-62A allows installation of regular arm with overhead holder/stop
Maximum opening	Regular or hold-open arm can be templated to 100°: A = 7-5/16" (186 mm) B = 8-5/8" (219 mm) or 101° to 130°: A = 5-13/16" (148 mm) B = 7-1/8" (181 mm) or *131° to 180°: A = 3-13/16" (97 mm) B = 5-1/8" (130 mm) Hold-open points up to maximum opening with hold-open arm. *Frame and trim permitting.

Note:  
• 1250 Parallel arm closer includes 1250-201 FIFTH HOLE SPACER to support PA SHOE

## EDA mount

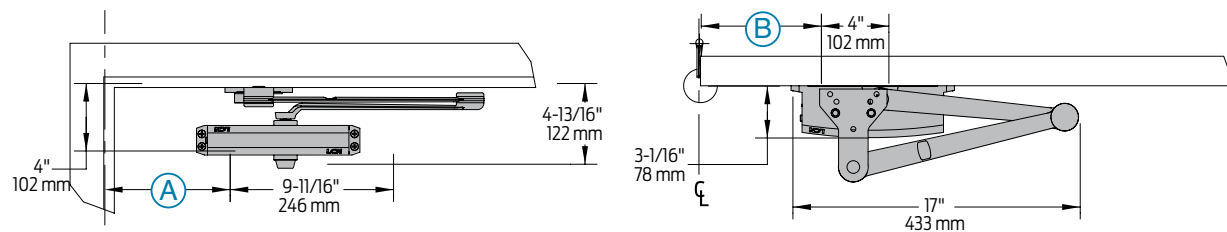


1250  
Series

Mounting details

EDA and CUSH -N-STOP  
mounting

## CUSH/SCUSH mount



The 'A' dimension refers to the edge of the closer body to the center line of pivot or hinge.

The 'B' dimension refers to the edge of the closer shoe bracket to the center line of pivot or hinge.

<b>Clearance</b>	1250-62EDA or CUSH shoe projects 5-11/16" (144mm) from door face	
<b>Head Frame</b>	Flush or rabbeted requires CUSH FLUSH PANEL ADAPTER, 1250-419	
<b>EDA or CUSH ARM</b>	Requires soffit SHOE SUPPORT, 1250-30 for fifth screw anchorage where reveal is less than 2-3/4" (70mm)	
<b>Spring CUSH</b>	Dead stop points are approximately 5° more than templated stop point.	
<b>Maximum opening</b>	EDA template allows 180°. Hold-open point up to maximum opening	CUSH arms can be templated for maximum opening/hold-open point at 85°
	100°: A = 7-5/16" (186mm) B = 9" (229 mm)	85°: A = 8-13/16" (224 mm) B = 10-1/2" (267 mm)
	or 130°: A = 5-13/16" (148 mm) B = 7-1/2" (191 mm)	90°: A = 8-1/16" (205 mm) B = 9-3/4" (248 mm)
	or 180°: A = 3-13/16" (97 mm) B = 5-1/2" (140 mm)	100°: A = 6-11/16" (170 mm) B = 8-3/8" (213 mm)
		105°: A = 6-1/16" (154 mm) B = 7-3/4" (197 mm)
		110°: A = 5-7/16" (138 mm) B = 7-1/8" (181 mm)

Note:

• 1250 closers ordered with EDA, CUSH or SPRING CUSH arms include 1250-201 FIFTH HOLE SPACER to support the shoe

### Cylinders



**1250-3071**  
Cast Aluminum Cylinder Assembly

- Non-Handed
- Standard

### Covers



**1250-72**  
Slim Line Plastic Cover

- Non-Handed
- Optional

### Installation Accessories



**1250-18**  
Plate

- Required for hinge side mount where top rail is less than 2-3/8" (60mm)
- Required for top jamb mounting where head frame is less than 1-3/4" (44 mm) or flush ceiling condition exists
- Requires minimum 1-1/2" (38 mm) minimum top rail or 1-1/4" (32 mm) head frame



**1250-18PA**  
Plate

- Required for parallel arm mounting where top rail is less than 4-1/2" (114mm), measured from the stop
- Requires 1-3/4" (44 mm) minimum top rail



**1250-30**  
CUSH Shoe Support

- Provide anchorage for fifth screw used with CUSH arms where reveal is less than 2-3/4" (70mm)



**1250-61**  
Blade Stop Spacer

- Lowers parallel arm shoe to clear 1/2" (13 mm) blade stop



**1250-62A**  
Auxiliary Shoe

- Requires a top rail of 7-1/8" (181mm). Optional shoe replaces -62PA for parallel arm mounting of regular arm with overhead holder/stop



**1250-419**  
PA Flush Panel Adapter

- Provides horizontal mounting surface for PA, EDA or CUSH shoe on single rabbeted or flush frame



**1250-62PA**  
PA Shoe

- Required for parallel arm mounting

### Arms



#### 1250-3077

##### Regular Arm w/PA

- Non-handed
- Mounts hinge side or top jamb
- Parallel Arm includes PA SHOE, 1250-62PA required for parallel arm mounting



#### 1250-3077L

##### Long Arm

- Non-handed
- Includes LONG ROD AND SHOE, 1250-79LR for top jamb mount with deep reveals
- Optional



#### 1250-3077EDA

##### Extra Duty Arm

- Non-handed
- Features solid forged steel main and forearm for potentially abusive installations
- Optional



#### 1250-3049EDA

##### Hold-Open Extra Duty Arm

- Handed
- Provides hold-open function adjustable at shoe
- Optional



#### 1250-3049

##### Hold-Open Arm w/PA

- Non-handed
- Mounts hinge side, top jamb or parallel arm (62PA required)
- Hold-open adjustable at shoe
- Optional



#### 1250-3049L

##### Long Hold-Open Arm

- Non-handed
- Includes LONG HEAD AND TUBE, 1250-3048L for top jamb mount with deep reveals
- Optional



#### 1250-3077CNS

##### Cush-n-Stop® Arm

- Non-handed
- Features solid forged steel main arm and forearm with stop in soffit shoe
- Optional



#### 1250-3049CNS

##### HCUSH Arm

- Non-handed
- Provides hold-open function with templated stop/hold-open points.
- Handle controls hold-open function
- Optional



#### 1250-3077SCNS

##### Spring CUSH Arm

- Non-handed
- For abusive applications features solid forged steel main arm and forearm with spring loaded stop in the soffit shoe
- Optional



#### 1250-3049SCNS

##### Spring HCUSH Arm

- Non-handed
- For abusive applications features solid forged steel main arm and forearm with spring loaded stop in the soffit shoe
- Handle controls hold-open function
- Optional

### How-to-order 1250 Series closers

#### Select finish

- ☐ Standard Powder Coat \_\_\_\_\_  
Aluminum, Dark Bronze, Statuary,  
Light Bronze, Black, Brass

#### Closer will be shipped with:

- Standard cylinder
- Tri pack arm (Rw/PA)
- Universal screw pack  
unless options listed below are selected.

### Closer options

#### Cover

- ☐ Slim line cover (SLIM)

#### Finish

- ☐ Custom Powder Coat (RAL)  
☐ SRI primer

#### Arm

- ☐ Regular w/62PA (Rw/PA)  
☐ Long (LONG)  
☐ Regular w/62A (R/62A)  
☐ Hold-Open w/62PA (Hw/PA)  
☐ Long Hold-Open (HLONG)  
☐ Extra Duty (EDA)  
☐ Hold-Open Extra Duty (HEDA) - specify handing  
☐ Cush-N-Stop (CUSH)  
☐ HCush (HCUSH)  
☐ Spring CUSH (SCUSH)  
☐ Spring HCUSH (SHCUSH)

#### Optional screw packs

- ☐ TORX Machine Screw (TORX)  
☐ TB\* & TORX Machine Screw (TBTORX)  
\* Specify door thickness if other than 1-3/4"

#### Installation accessories

- ☐ Plate, 1250-18  
☐ Plate, 1250-18PA  
☐ CUSH Shoe Support, 1250-30  
☐ Blade Stop Spacer, 1250-61  
☐ Auxiliary Shoe, 1250-62A  
☐ PA Flush Panel Adapter, 1250-419

#### Special template

- ☐ ST- \_\_\_\_\_

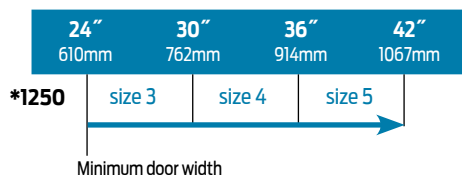
#### Meets Buy American Act

- ☐ BAA

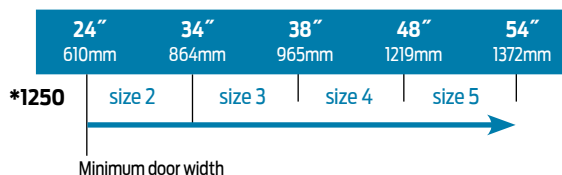
### Table of sizes

- Select closer based on width of door.
- The spring power of a 1250 cylinder is field adjustable from size 1 through size 5 and is shipped adjusted to size 3.

#### Exterior (and Vestibule) door width



#### Interior door width




→ Indicates recommended range of door width for closer size.  
\* Adjustable Size 1 thru 5.

### Reduced opening force 1250 Series closers

**CAUTION !** Any manual door closer, including those certified by BHMA to conform to ANSI Standard A156.4, that is selected, installed and adjusted based on ADA or other reduced opening force requirements may not provide sufficient power to reliably close and latch a door.

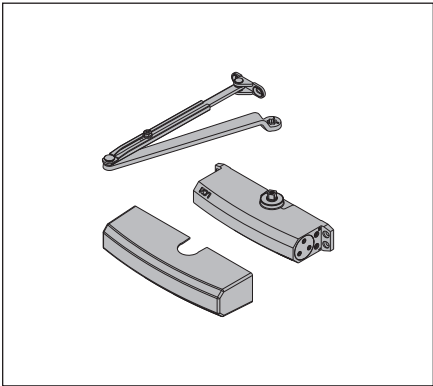
Refer to POWER OPERATORS section for information on systems that meet reduced opening force requirements without affecting closing power.

\* Maximum opening force.

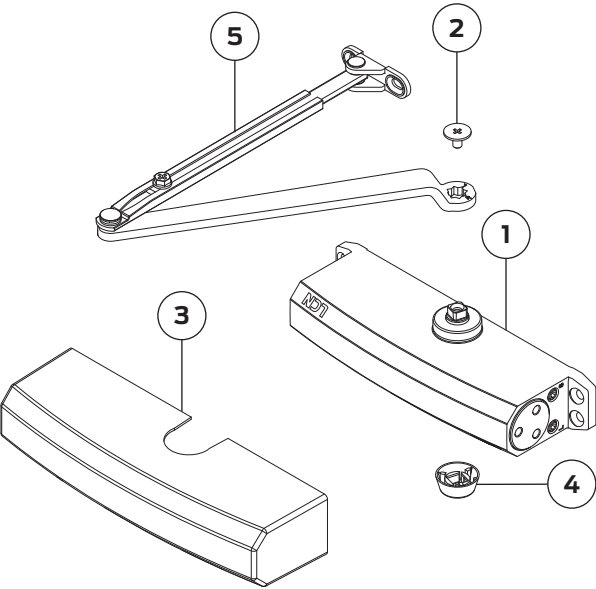
	DOOR WIDTH	36"	42"	48"
	8.5* lbs.	1250	1250	1250
	5.0* lbs.	1250	1250	1250



1250 Series



Cylinder & Cover Parts

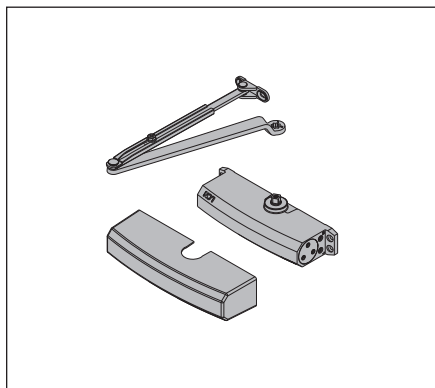


No.	Description	Part number
1	Cylinder Assembly (F)(S)	1250-3071
2	Arm Screw (F)	1250-UNIV
3	Slim Line Cover (F)	1250-72
4	Pinion Cap Cover (F)	1250-146

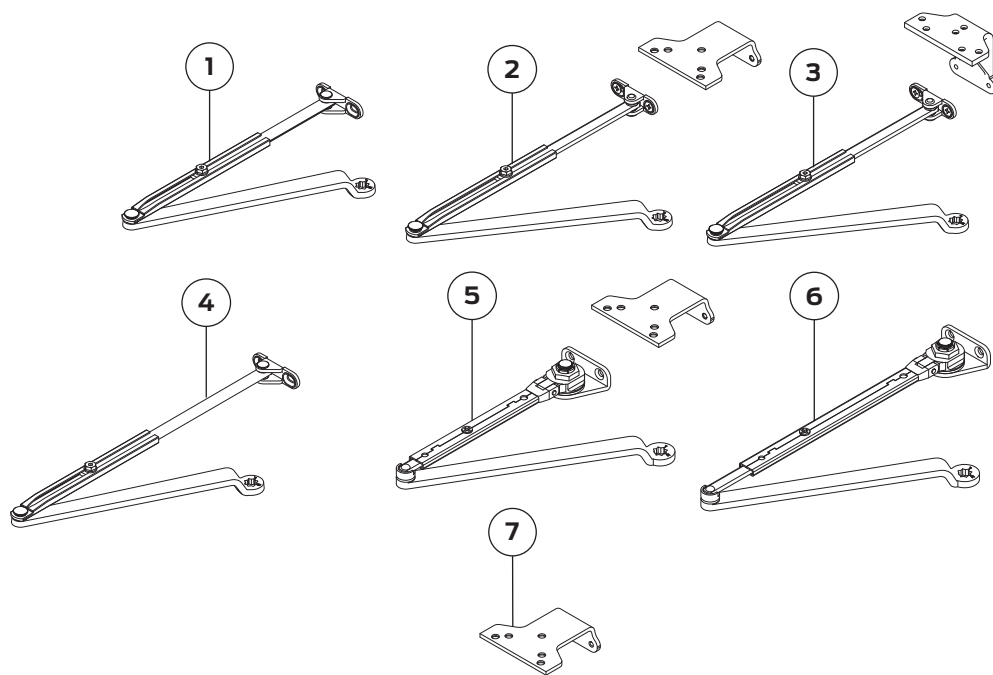
No.	Description	Part number
5	Reg Arm (F)	1250-3077
6	Screw Pack (Not Shown) (F)	1250-UNIV
7	Screw Pack (Not Shown) (F)	1250-TORX

Please specify finish (F), size (S), hand (H), & voltage (V) where indicated. See the latest edition of the LCN catalog for part descriptions and specifications on many of the items shown above. List prices for items shown above can be located in the current LCN price book.

## 1250 Series



### Arm Assemblies & Parts

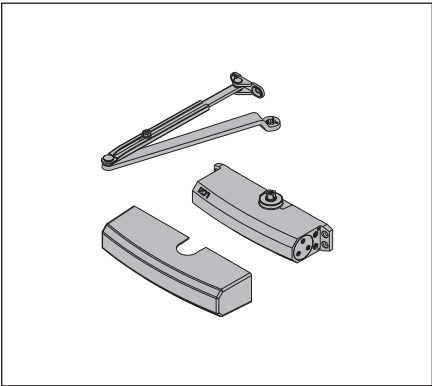


No.	Description	Part number
1	Reg Arm (F)	1250-3077
2	Reg Arm w/ 62PA (F)	1250-3077/PA
3	Reg Arm w/ 62A Shoe (F)	1250-3077/62A
4	Long Arm (F)	1250-3077L

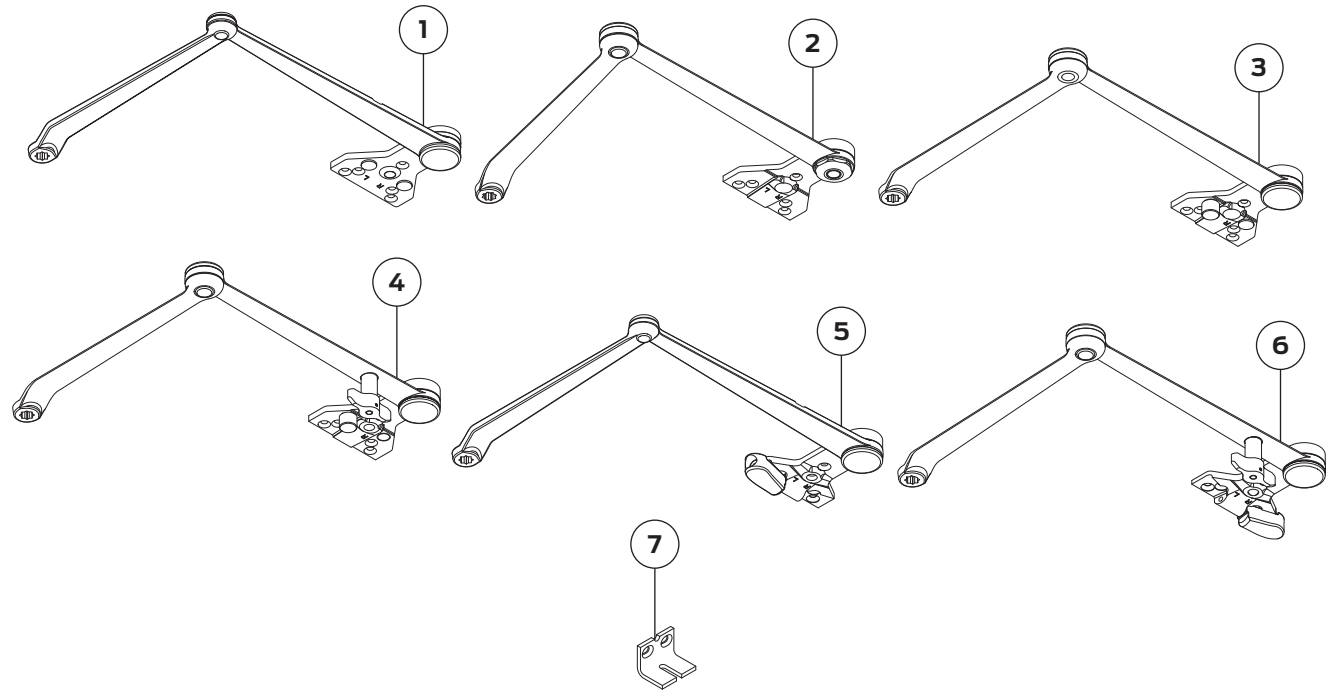
No.	Description	Part number
5	Hold Open Arm w/ 62PA (F)	1250-3049/PA
6	Hold Open Long Arm (F)	1250-3049L
7	PA Shoe (F)	1250-62PA

Please specify finish (F), size (S), hand (H), & voltage (V) where indicated. See the latest edition of the LCN catalog for part descriptions and specifications on many of the items shown above. List prices for items shown above can be located in the current LCN price book.

1250 Series



Arm Assemblies & Parts

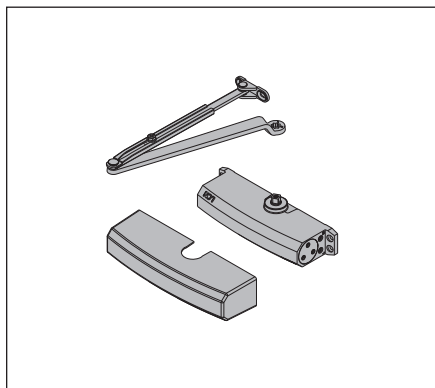


No.	Description	Part number
1	EDA Arm (F)	1250-3077EDA
2	Hold Open EDA (F) (H)	1250-3049EDA
3	CUSH Arm (F)	1250-3077CUSH
4	Hold Open CUSH Arm (F)	1250-3049CUSH

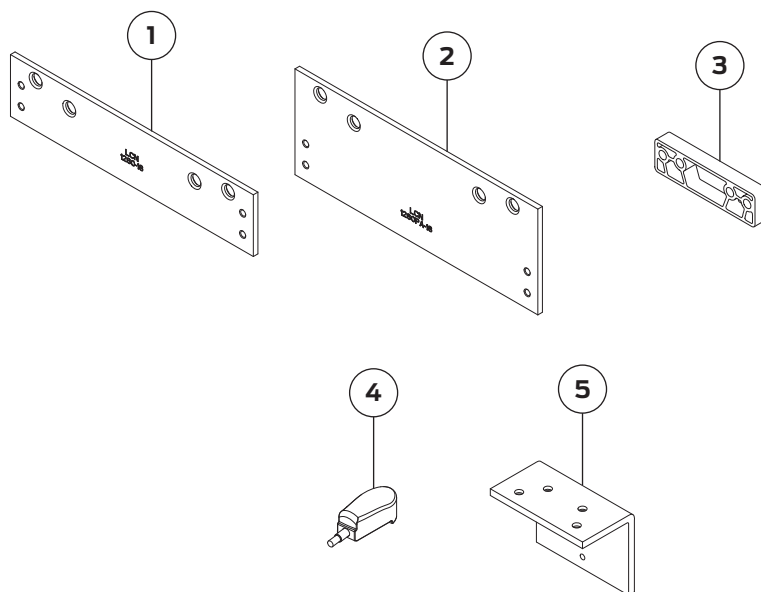
No.	Description	Part number
5	Spring CUSH Arm (F)	1250-3077SCNS
6	Hold Open Spring CUSH Arm (F)	1250-3049SCNS
7	CUSH Shoe Support (F)	1250-30

Please specify finish (F), size (S), hand (H), & voltage (V) where indicated. See the latest edition of the LCN catalog for part descriptions and specifications on many of the items shown above. List prices for items shown above can be located in the current LCN price book.

## 1250 Series



### Mounting Plates & Miscellaneous Parts



No.	Description	Part number
1	18 Mounting Plate (F)	1250-18
2	18PA Mounting Plate (F)	1250-18PA
3	Blade Stop Spacer (F)	1250-61

No.	Description	Part number
4	Spring CUSH Block (F)	1250-3080
5	Flush Panel Adapter (F)	1250-419

Please specify finish (F), size (S), hand (H), & voltage (V) where indicated. See the latest edition of the LCN catalog for part descriptions and specifications on many of the items shown above. List prices for items shown above can be located in the current LCN price book.