



INST.COR

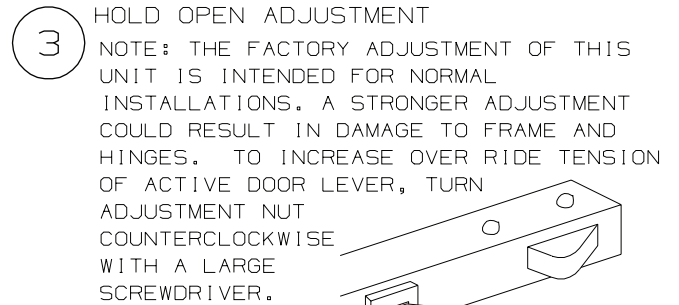
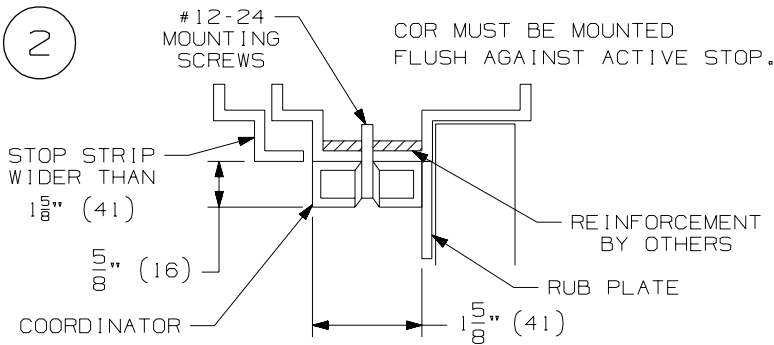
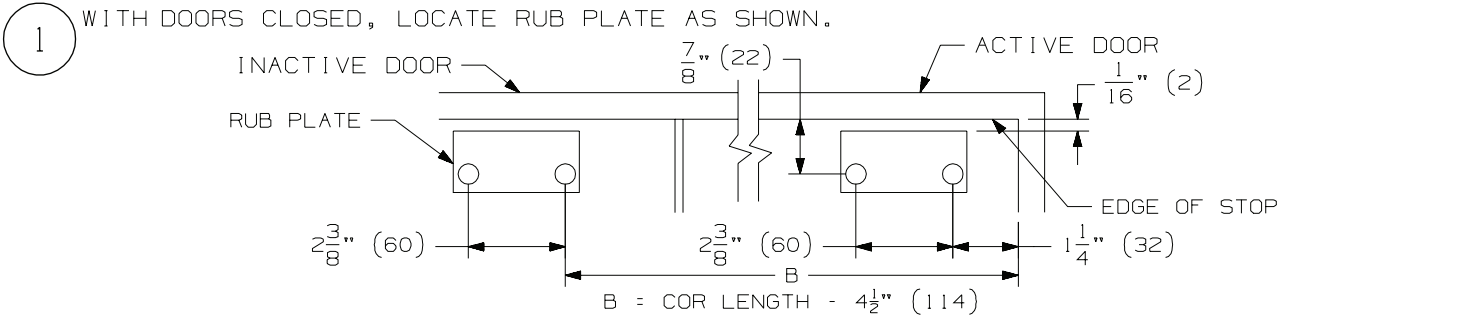
COR32, COR42, COR52, COR60 & COR72

IVES

Coordinator with CB1 Carry Bar, MB1 & MB2 Mounting Brackets

Installation Instructions

NOTE: INSTALL COORDINATOR BEFORE ANY OTHER HARDWARE EXCEPT HINGES AND DOORS. FRAMES MUST BE ADEQUATELY REINFORCED.



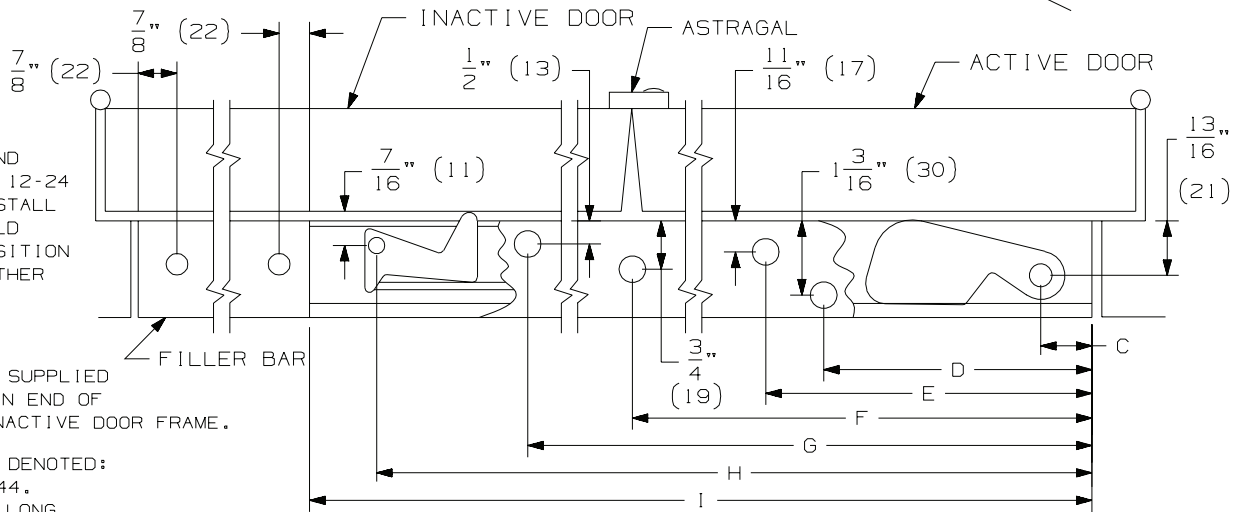
TO INSTALL COORDINATOR:

LOCATE AS SHOWN AND DRILL AND TAP FOR 12-24 MACHINE SCREW. INSTALL 12-24 SCREW TO HOLD COORDINATOR IN POSITION BEFORE DRILLING OTHER MOUNTING HOLES.

FILLER BAR MAY BE SUPPLIED TO FILL GAP BETWEEN END OF COORDINATOR AND INACTIVE DOOR FRAME.

FILLER PIECES ARE DENOTED:
 FL20, FL32 AND FL44.
 FL20 IS 20" (208) LONG.
 FL32 IS 32" (813) LONG.
 FL44 IS 44" (1118) LONG.

TO INSTALL FILLER BAR, CUT FILLER BAR TO LENGTH NEEDED. DRILL $\phi 25/64'' (10)$ HOLES IN FILLER BAR AT LOCATIONS INDICATED. PLACE BUSHINGS IN THESE HOLES. DRILL AND TAP MOUNTING HOLES FOR 12-24 MACHINE SCREW. INSTALL 12-24 MACHINE SCREW THROUGH BUSHINGS. THE BUSHING WILL PREVENT THE FILLER BAR FROM COLLAPSING.



LENGTH OF CHANNEL (I)	DIMENSIONS					
	C	D	E	F	G	H
32"	$7\frac{7}{8}'' (22)$	$4\frac{7}{8}'' (124)$	$11\frac{13}{32}'' (290)$	OMIT	28" (791)	$31\frac{1}{8}'' (791)$
42"	$7\frac{7}{8}'' (22)$	$4\frac{7}{8}'' (124)$	$11\frac{13}{32}'' (290)$	$27\frac{5}{8}'' (702)$	38" (965)	$41\frac{1}{8}'' (1044)$
52"	$7\frac{7}{8}'' (22)$	$4\frac{7}{8}'' (124)$	$11\frac{13}{32}'' (290)$	$27\frac{5}{8}'' (702)$	48" (1219)	$51\frac{1}{8}'' (1299)$
60"	$7\frac{7}{8}'' (22)$	$4\frac{7}{8}'' (124)$	$11\frac{13}{32}'' (290)$	$27\frac{5}{8}'' (702)$	56" (1422)	$59\frac{1}{8}'' (1502)$
72"	$7\frac{7}{8}'' (22)$	$4\frac{7}{8}'' (124)$	$11\frac{13}{32}'' (290)$	$27\frac{5}{8}'' (702)$	68" (1727)	$71\frac{1}{8}'' (1807)$

NOTE: DIMENSIONS IN () ARE MILLIMETERS.

Customer Service

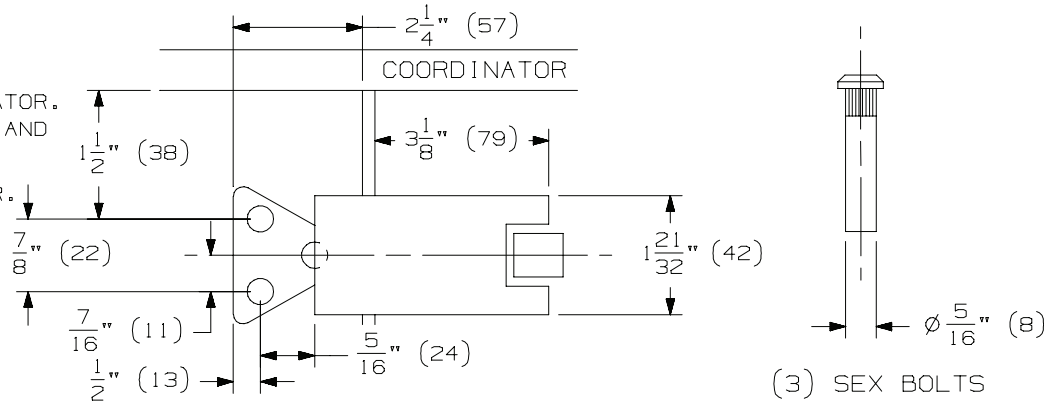
1-877-671-7011 www.allegion.com/us



© Allegion 2017
 Printed in U.S.A.
 INST.COR Rev. 01/17-d

4 CB1

CB1 CARRY BAR MAY BE SUPPLIED WITH COORDINATOR. LOCATE HOLES AS SHOWN AND DRILL $\phi \frac{5}{16}$ " FOR SEX BOLTS ON INACTIVE DOOR.



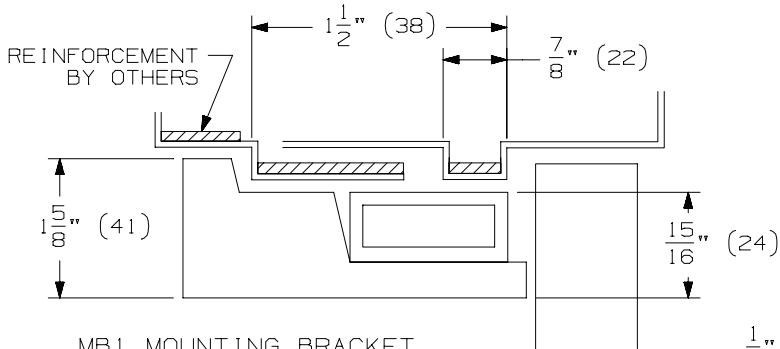
(3) SEX BOLTS

5

MOUNTING BRACKETS FOR STOP APPLIED HARDWARE MAY BE SUPPLIED WITH COORDINATOR. BRACKETS MUST BE FIELD PREPARED FOR STOP APPLIED HARDWARE. LOWER MOUNTING HOLES FOR DOOR APPLIED HARDWARE $\frac{15}{16}$ " TO CLEAR COORDINATOR AND MOUNTING BRACKET.

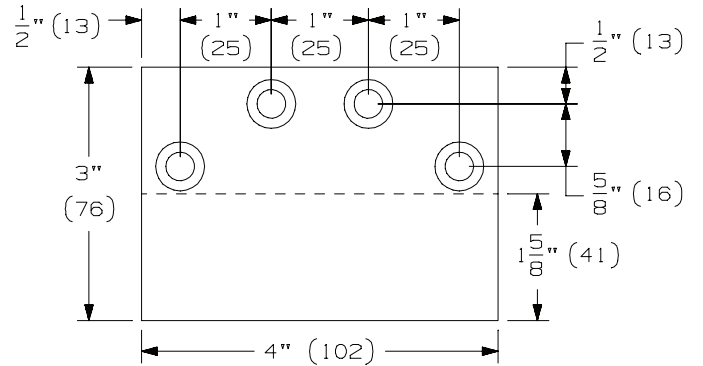
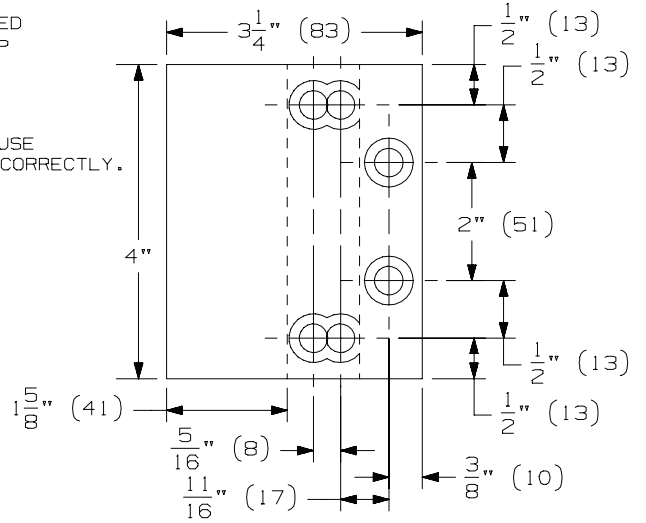
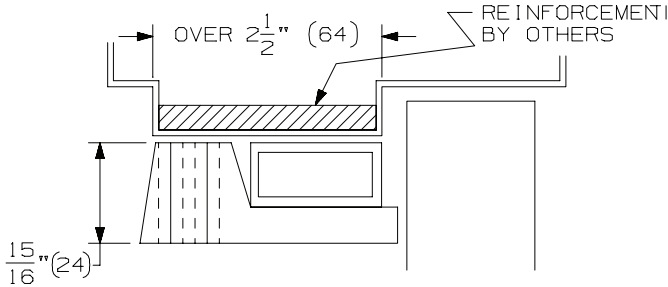
NOTE: DO NOT DRILL HOLES IN THE COORDINATOR. THIS WILL CAUSE DAMAGE TO THE UNIT AND THE COORDINATOR WILL NOT FUNCTION CORRECTLY.

MB2 MOUNTING BRACKET FOR STRIP WIDTH UP TO $2\frac{1}{2}$ "



MB1 MOUNTING BRACKET

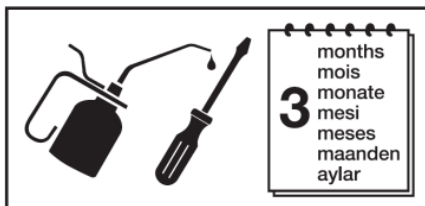
FOR STOP STRIP WIDTHS OVER $2\frac{1}{2}$ "



	QTY	SCREW DETAILS
COORDINATOR	6	12-24 X 1 1/4" TRPHMS
FILLER BAR	2	BUSHINGS
	2	12-24 X 1 1/4" TRPHMS
RUB PLATE	4	8 X 3/4" FPHSMS
CARRY BAR	3	12-24 X 1 1/4" TRPHMS
	3	$\phi \frac{5}{16}$ " SEX BOLT
MB1 OR MB2	4	12-24 X 1 1/4" TRPHMS

NOTE: FOR MB1F, MB2F, MB3F, MB1V, MB2V OR MB3V, SEE SEPARATE INSTRUCTIONS.

NOTE: DIMENSIONS IN () ARE MILLIMETERS.



	ALLEGION Bescot Crescent Walsall, WS1 4DL England	
	1121 - CPR - AF5000	2014
EN 1158:1997 + A1:2002	3	5 6/3 1 1 3

Products conforming to this certification

32" (813mm) Channel Length COR32
 42" (1067mm) Channel Length COR42
 52" (1320mm) Channel Length COR52

For additional information and full details of certification and fire door suitability :-
 Tel +44 (0) 800 834 102
 www.allegion.co.uk

IVES
 Certificate of authenticity

Thank you for choosing a genuine Allegion product
 This certificate guarantees that this product meets the demanding standards indicated by the certification details shown on this sheet.
 Manufactured in a ISO quality assured facility.

ALLEGION
 Bescot Crescent
 Walsall, West Midlands
 WS1 4DL