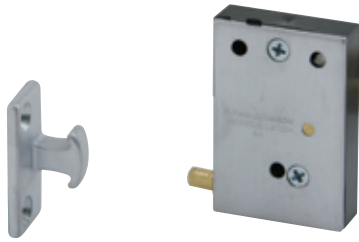


A
Hinges & Pivots



Meets ANSI/BHMA 156.9, B03272

CL11 Invisible Latch

- Invisible latch is ideal for installations where no visible latch is desired.
- Unit can be installed at the top, bottom or side of the door.
- Can be mortised into the stop or surface mounted to the stop.
- Recommended for use on small panels, cabinet doors or light weight closet doors.
- Operation is simple, latching is accomplished by a slight push. To unlatch the door, a harder push releases the door and pushes the door out.
- Brass and plastic construction.
- Applies 13 pounds to open the door.

Dimensions

Body: 1-1/4" Wide x 1-7/8" High x 7/16" Thick
Strike: 9/16" Wide x 1-5/16" High x 9/16" High

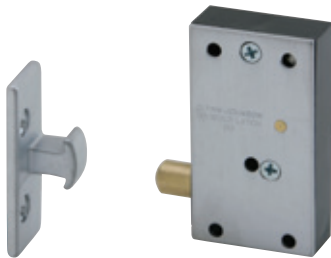
Finishes

Ives Number	US3	US4	US10	US26D
BHMA	605	606	612	626

B
Pulls & Plates

C
Flush Bolts & Coordinators

D12
Latches, Catches & Bolts



Meets ANSI/BHMA A156.9, B03272

CL12 Invisible Latch

- Invisible latch is ideal for installations where no visible latch is desired.
- Unit can be installed at the top, bottom or side of the door.
- Can be mortised into the stop or surface mounted to the stop.
- Recommended for use on larger panels or regular size doors.
- Operation is simple, latching is accomplished by a slight push. To unlatch the door, a harder push releases the door and pushes the door out.
- Brass and plastic construction.
- Applies 27 pounds to open the door.

Dimensions

Body: 1-1/4" Wide x 2-1/4" High x 9/16" Thick
Strike: 5/8" Wide x 1-13/16" High x 9/16" Projection

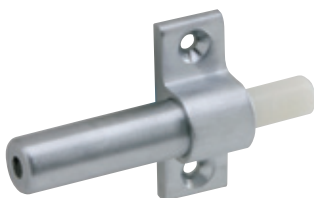
Finishes

Ives Number	US3	US4	US10	US26D
BHMA	605	606	612	626

E
Stops

F
Exterior Hardware

G
Miscellaneous Hardware



Meets ANSI/BHMA A156.9, B13282

CL14 Auxiliary Pusher

- Aid in the operation of the CL11 and CL12 where hinges or surrounding conditions prevent smooth operation of doors.
- Provides 1-1/16" throw.
- Nylon pusher.
- Brass construction.
- Applies 10 pounds to open the door.

Dimensions

Body: 2-15/16" Long x 1-11/16" Wide x 5/8" Deep

Finishes

Ives Number	US3	US4	US10	US26D
BHMA	605	606	612	626