

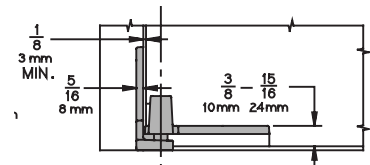
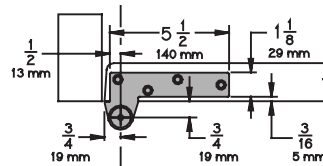
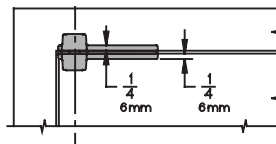
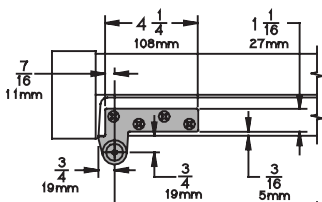
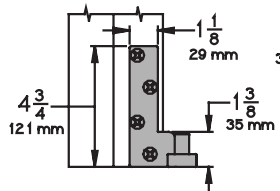
Meets ANSI/BHMA A156.4 C07131

7215 - UL Listed 20 minute fire doors  
7215F - UL Listed 3 hour fire doors

**7215**  
**7215F 3/4" Offset Pivot**

- Handed
- Top, header mount
- Bottom, jamb mount
- Use with 1-3/4" minimum door thickness, with 1/8" bevel in 2"
- Maximum door load 500 pounds
- Vertical adjustment range 3/16", with positive locking
- WP - optional weather resistant bottom pivot is modified for improved corrosion resistance. Available in US26D (626) or US32D (630) only.

Optional 7215-7226-7227 or 7215F-7226F-7227F Intermediate Pivot (handed) for each additional 100 pounds or doors over 7'. See page A47.  
Optional 7215PT Power Transfer, non-load bearing. See page A49



**7215**

**Plated Finishes *brass***

US Number	US3	US4	US10	US10B	US26	US26D
BHMA Number	605	606	612	613	625	626

**Painted Finishes *brass***

US Number	SP4	SP10	SP28	SP313	SPBLK
BHMA Number	706	691	689	695	622

**7215F**

**Plated Finishes *steel***

US Number	US3	US10	US32	US32D
BHMA Number	632	639	629	630

**Painted Finishes *steel***

US Number	SP4	SP10	SP28	SP313	SPBLK
BHMA Number	706	691	689	695	622