

# SC80A Series



Medium-duty applications like retail storefronts, cafes and clinics that need a closer that makes door operation smooth and secure. The Falcon SC80A Series brings ANSI grade 1 durability and reliable performance to interior and exterior doors. An adjustable design ensures flexible installation and ADA compliance.

## Standard features

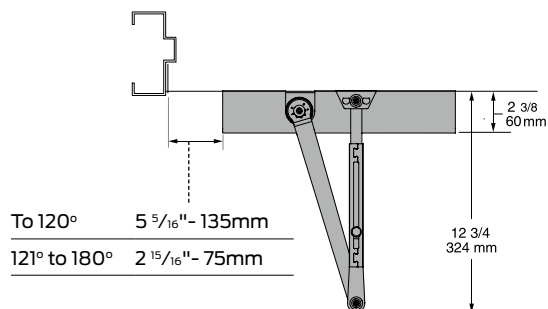
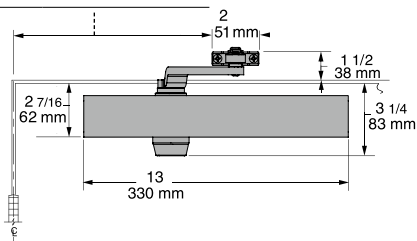
- Single piece cast aluminum body
- Fully adjustable sizes 1-6
- Separate adjustable general speed, latch speed and backcheck
- Closer mounts hinge side, top jamb or parallel arm when either the RW/PA or HW/PA arm is specified
- Non-handed for left or right swinging doors
- 1 1/4" diameter heat treated steel piston
- Heat-treated pinion
- Universal screw pack for aluminum, hollow metal, and wood doors, includes self reaming, and tapping screws
- Staked valves
- Meets ANSI A117.1
- ANSI/BHMA A156.4, grade 1
- UL listed and compliant to UL10C and UBC 7-2 (1997)
- Cover is UL approved for use in fire rated assemblies
- 10-year warranty
- Retrofittable to Norton 8000 hole pattern

## Listings and ratings

The Falcon SC81A is UL listed and compliant to UL10C and UBC 7-2 (1997). Additionally, the SC81A is designed to meet the American Disabilities Act (ADA) and ANSI A117.1. The SC81A is rated ANSI/BHMA A156.4, Grade 1.

## SC80A Series hinge (pull side)

To 120°	11 3/4" - 298mm
121° to 180°	8 1/2" - 216mm



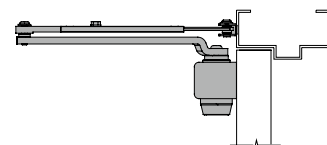
**Butt hinges** should not exceed 5" (127mm) in width.

**Auxiliary stop** is recommended at hold-open point or where a door cannot swing 180°

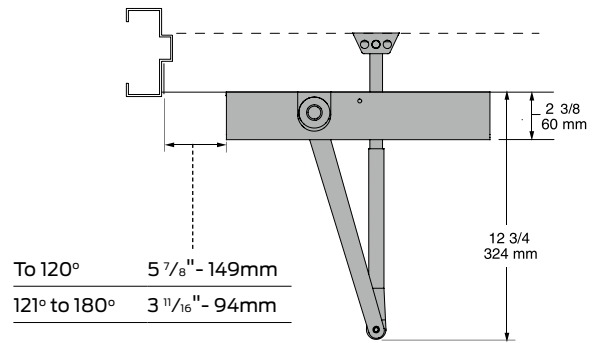
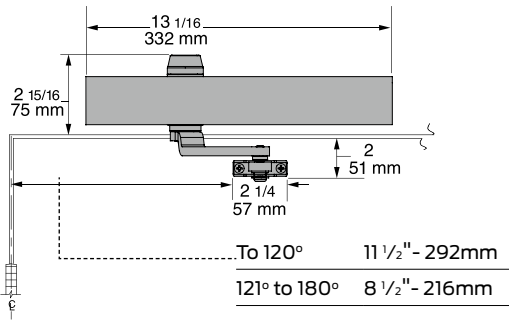
**Reveal** should not exceed 3/4" (19mm) for regular arm or hold-open arm.

**Clearance** of 2 3/8" (60mm) behind door required for 90° installation.

**Delayed action** add suffix "DEL" to selected cylinder (ex. SC80A DEL). Delays closing from maximum opening to approximately 70° with adjustable delay time.



## SC80A Series top jamb (push side)



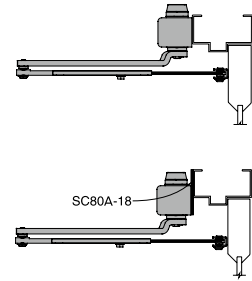
**Butt hinges** should not exceed 5" (127mm) in width.

**Auxiliary stop** is recommended at hold-open point or where a door cannot swing 180°.

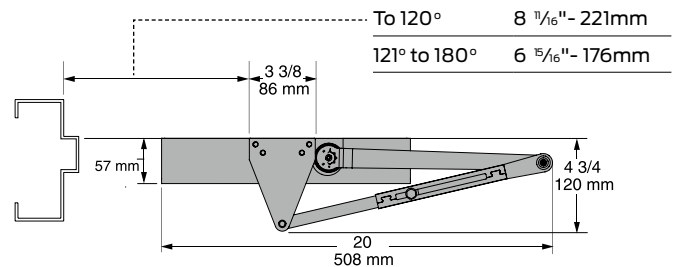
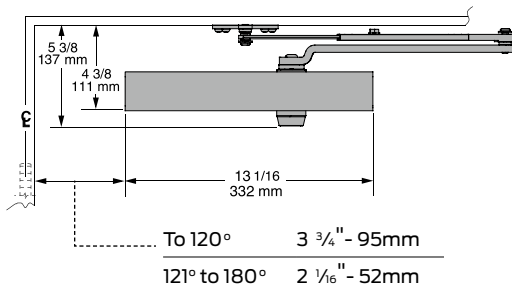
**Reveal** should not exceed 3 1/4" (83mm) for regular arm or hold-open arm.

**Head frame** less than 2 5/16" (59mm) requires plate SC80A-18.

**Delayed action** add suffix "DEL" to selected cylinder (ex. SC80A DEL). Delays closing from maximum opening to approximately 70°, with adjustable delay time.



## SC80A Series parallel (push side)

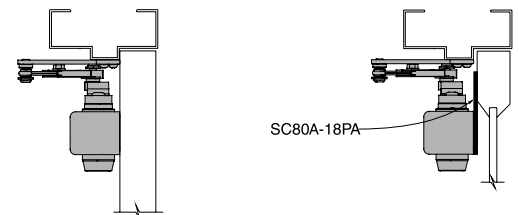


**Butt hinges** should not exceed 5" (127mm) in width.

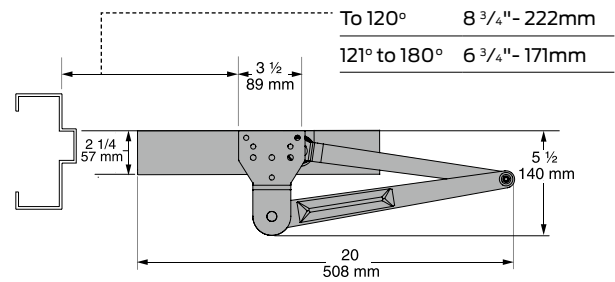
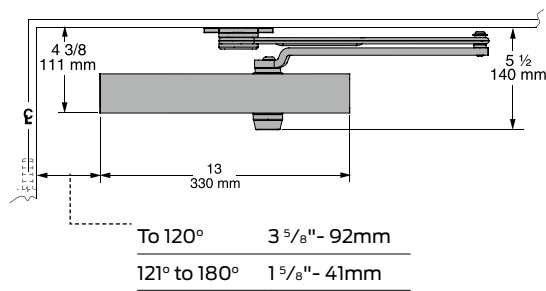
**Auxiliary stop** is recommended at hold-open point or where a door cannot swing 180°.

**Top rail** less than 4 3/8" (111mm) measured from stop requires plate SC80A-18PA.

**Delayed action** add suffix "DEL" to selected cylinder (ex. SC80A DEL). Delays closing from maximum opening to approximately 70°, with adjustable delay time.



## SC80A Series heavy duty (parallel)

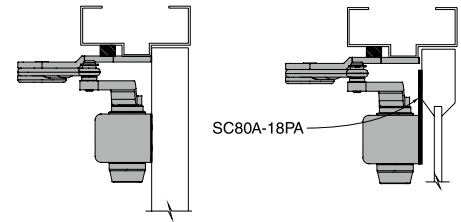


**Butt hinges** should not exceed 5" (127mm) in width.

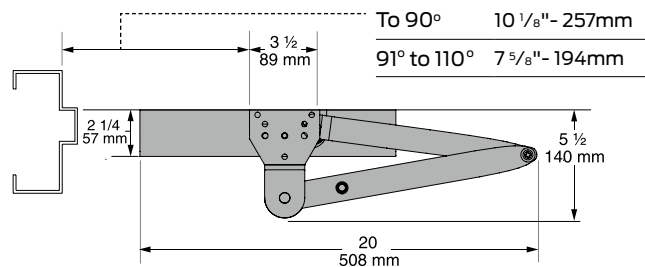
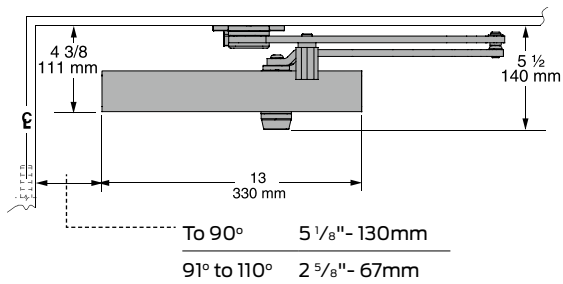
**Auxiliary stop** is recommended at hold-open point, where a door cannot swing 180°, or where Dead stop or Spring-n-stop arm is not used.

**Top rail** less than 4 3/8" (111mm) measured from stop requires plate SC80A-18PA.

**Delayed action** add suffix "DEL" to selected cylinder (ex. SC80A DEL). Delays closing from maximum opening to approximately 70°, with adjustable delay time.



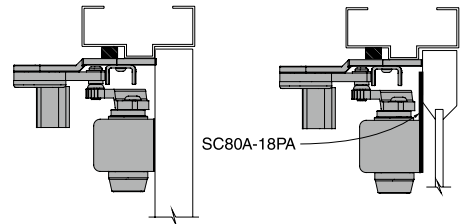
## SC80A Series dead stop HO (parallel)



**Butt hinges** should not exceed 5" (127mm) in width.

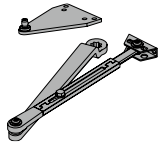
**Top rail** less than 4 3/8" (111mm) measured from stop requires plate SC80A-18PA.

**Delayed action** add suffix "DEL" to selected cylinder (ex. SC80A DEL). Delays closing from maximum opening to approximately 70°, with adjustable delay time.

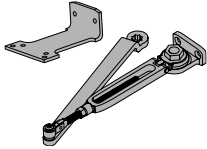


## Arm types

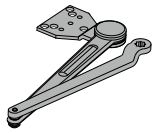
All SC80A Series closers come with slim cover, standard arm and screw pack.



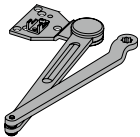
**Regular arm, SC80A-3077PA**  
Non-handed arm with adjustable forearm assembly to accommodate a range of doors and frame reveal conditions. Mounts hinge side, top jamb or parallel arm. PA shoe included to allow installation in a parallel arm configuration.



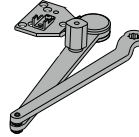
**Hold-open regular arm, SC80A-3049PA**  
Optional, non-handed, hold open arm with adjustable forearm assembly to accommodate a range of doors and frame reveal conditions. Mounts hinge side, top jamb or parallel arm. PA shoe included to allow installation in a parallel arm configuration.



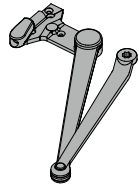
**Heavy duty arm, SC80A-3077HD**  
Optional, non-handed, stamped, heavy duty, parallel arm for use in high-traffic applications.



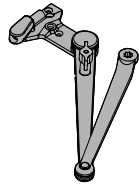
**Dead stop arm, SC80A-3077DS**  
Optional, non-handed, stamped, heavy duty, parallel arm includes a positive mechanical stop and non-adjustable forearm assembly for high volume traffic or potentially abusive installation conditions.



**Dead stop hold-open Arm, SC80A-3049DS**  
Optional, non-handed, stamped, heavy duty, hold-open parallel arm includes a positive mechanical stop and non-adjustable forearm assembly for high volume traffic or potentially abusive installation conditions. Also includes a manually selective hold-open function.



**Spring-n-stop arm, SC80A-3077SS**  
Optional, non-handed, extra heavy-duty, forged parallel arm includes an integral spring stop and non-adjustable forearm assembly for high volume traffic or potentially abusive installation conditions.

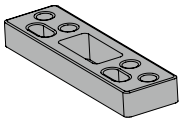


**Spring-n-stop hold-open arm, SC80A-3049SS**  
Optional, non-handed, extra heavy-duty, forged parallel arm includes an integral spring stop and non-adjustable forearm assembly for high volume traffic or potentially abusive installation conditions. Also includes a manually selective hold-open function.

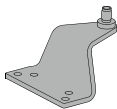
## Installation accessories



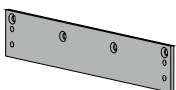
**Soffit shoe support, SC80A-30**  
Provides anchorage for fifth screw used with soffit shoe, where reveal is less than  $3\frac{1}{16}$ " (78mm).



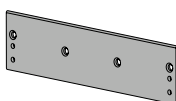
**Blade stop spacer, SC80A-61**  
Required to lower parallel arm shoe to clear  $\frac{1}{2}$ " (13mm) blade stop.



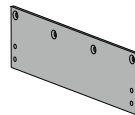
**Auxiliary shoe, SC80A-62A**  
Requires a top rail of 7" (178mm). Optional shoe replaces PA shoe for parallel arm mounting of regular arm with overhead holder/stop.



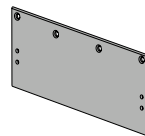
**Plate, SC80A-18**  
Required for top jamb mounting where head frame is less than  $1\frac{3}{4}$ " (44mm) or flush ceiling conditions exists.



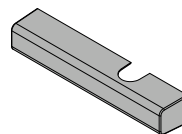
**Plate, SC80A-18FC**  
Required for top jamb mounting where head frame is less than  $1\frac{3}{4}$ " (44mm) or flush ceiling conditions exist. To be used with a full cover SC80A-72FC.



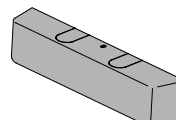
**Plate, SC80A-18PA**  
Required for parallel arm mounting where top rail is less than  $4\frac{3}{8}$ " (111mm), measured from the stop. Plate requires  $1\frac{7}{8}$ " (48mm) minimum top rail measured from stop.



**Plate, SC80A-18PAFC**  
Required for parallel arm mounting where top rail is less than  $4\frac{3}{8}$ " (111mm), measured from the stop. Plate requires  $1\frac{7}{8}$ " (48mm) minimum top rail measured from stop. To be used with a full cover SC80A-72FC.



**Cover, SC80A-72**  
Standard, non-handed, slim line plastic cover encloses the closer body with a cap on the unused pinion shaft.



**Cover, SC80A-72FC**  
Optional non-handed, full plastic cover encloses the closer body.

# SC80A Series

		Cylinder	Cover	Arm	Finish	Accessories
<b>STD**</b>	SC81A Standard					
<b>DEL</b>	SC81A Delay					
<b>Slim cover</b>	SC80A-72					
<b>Full cover</b>	SC80A-72FC (optional, please specify)					
<b>RW/PA**</b>	Regular with parallel arm shoe					
<b>HW/PA**</b>	Hold open with parallel arm shoe					
<b>HD</b>	Heavy duty arm					
<b>DS**</b>	Dead stop arm					
<b>DS/HO</b>	Dead stop hold open arm					
<b>SS</b>	Spring stop arm					
<b>SS/HO</b>	Spring stop hold open arm					
<b>Matte black **</b>	622					
<b>Aluminum</b>	689					
<b>Dark bronze</b>	695					
<b>Brass*</b>	696					
<b>Soffit shoe support</b>	SC80A-30					
<b>Blade stop spacer</b>	SC80A-61					
<b>Auxiliary shoe</b>	SC80A-62A					
<b>Top jamb plate</b>	SC80A-18					
<b>Top jamb plate - full cover</b>	SC80A-18FC					
<b>PA Plate</b>	SC80A-18PA					
<b>PA Plate - full cover</b>	SC80A-18PAFC					
<b>Slim cover</b>	SC80A-72					
<b>Full cover</b>	SC80A-72FC					

\* Contact customer service at 1-877-671-7011 for lead time information.

\*\* Matte Black (622) is only available on standard cylinders and RW/PA, HW/PA, and DS.

Note: SC81A models have adjustable sizes 1-6

## Cylinder options

**Standard cylinder (STD)** – Standard cylinder provides a main speed function to control the motion of the door from maximum opening angle until the door is a few inches from the latch where latch function controls the final closing motion. The opening swing is controlled by the hydraulic backcheck function from about 70° to maximum opening angle.

**Delayed action cylinder (DEL)** – Special cylinder provides a separate adjustable delayed closing motion from maximum opening angle to approximately 70°. Then the main speed function controls the door motion until the door is a few inches from the latch where latch function controls the final closing motion. During the opening swing the door is controlled by the hydraulic backcheck function from about 70° to maximum opening angle.

## Competitive cross reference

### Surface closer cross reference

Falcon	SC60A	SC70A	SC80A	SC90A
Norton	*1600BC	*7500/ 7700	*8500	1700BC
Hager	*5300	5100	*5200	5400
Stanley	*D-1650	D-4550	D-3550	
Yale	*50/ 51BC/ 1100	*4400	3300/ *3500	5100BC
Sargent	*1130	280/350	*1330	
Corbin		DC8000	DC3000	
Dorma	7400	8900	*8600	7300/ 7200

\* identical footprint to listed Falcon closer.