

SC60A Series



When you need a dependable closer for a standard-duty application, the Falcon SC60A Series gets the job done. Designed for interior use with an aluminum storefront, the SC60A Series offers ANSI grade 1 durability backed by a ten-year warranty. Most common hole pattern in the industry for versatile use and easy retrofit.

Standard features

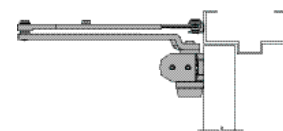
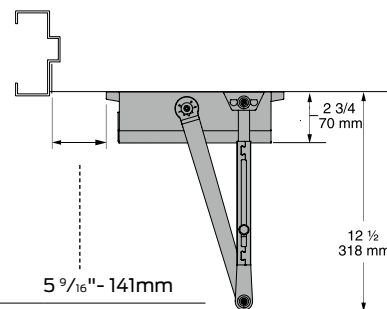
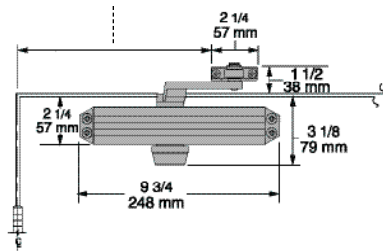
- Single piece cast aluminum body
- Fully adjustable sizes 1-5
- Separate adjustable general speed, latch speed and backcheck
- Closer mounts hinge side, top jamb or parallel arm when either the RW/PA or HW/PA arm is specified
- Non-handed for left or right swinging doors
- Heat-treated pinion and steel piston
- Universal screw pack for aluminum, hollow metal, and wood doors, includes self reaming, and tapping screws
- Staked valves
- Meets ANSI A117.1
- ANSI/BHMA A156.4, grade 1
- UL listed and compliant to UL10C and UBC 7-2 (1997)
- Cover is UL approved for use in fire rated assemblies
- 10-year warranty
- Retrofittable to Norton 1600 hole pattern

Listings and ratings

The Falcon SC60A is UL listed and compliant to UL10C and UBC 7-2 (1997). Additionally, the SC61A is designed to meet the American Disabilities Act (ADA) and ANSI A117.1. The SC60A Series is rated ANSI/BHMA A156.4, Grade 1.

SC60A Series hinge (pull side)

To 120°	11 13/16" - 300mm
121° to 180°	8 1/4" - 210mm



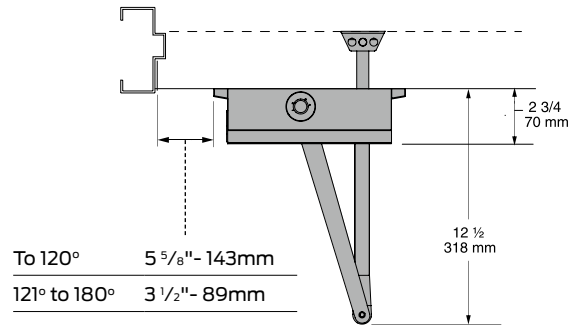
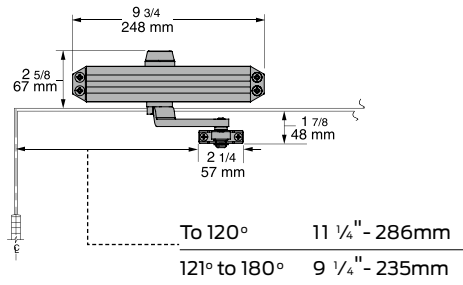
Butt hinges should not exceed 5" (127mm) in width.

Auxiliary stop is recommended at hold-open point or where a door cannot swing 180°.

Reveal should not exceed 3/4" (19mm) for regular arm or hold-open arm.

Clearance of 2 3/4" (70mm) behind door required for 90° installation.

SC60A Series top jamb (push side)

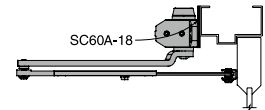
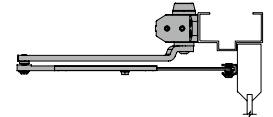


Butt hinges should not exceed 5" (127mm) in width.

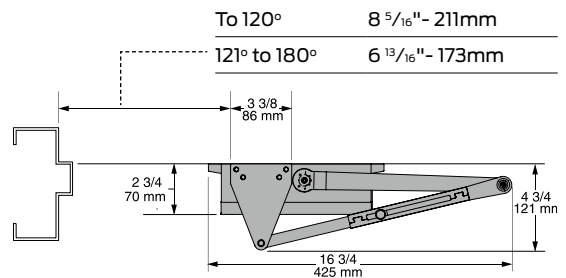
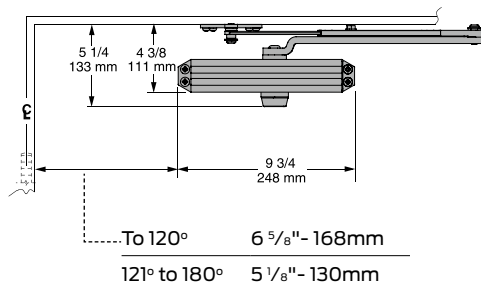
Auxiliary stop is recommended at hold-open point or where a door cannot swing 180°.

Reveal should not exceed 3 1/4" (83mm) for regular arm or hold-open arm.

Head frame less than 2 5/8" (69mm) requires plate SC60A-18.



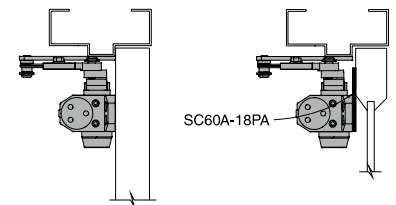
SC60A Series parallel (push side)



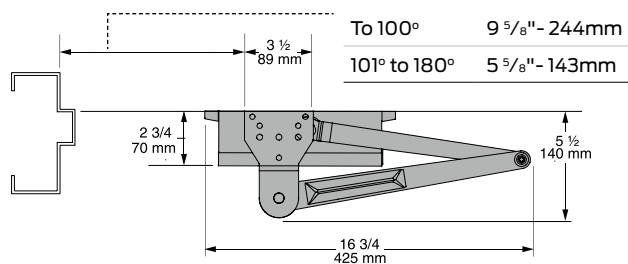
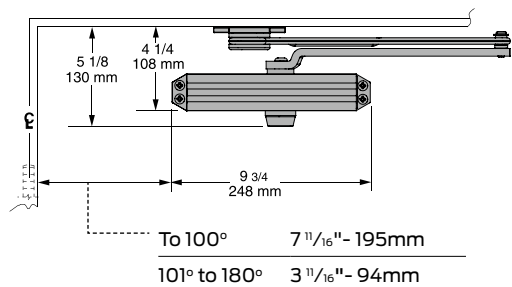
Butt hinges should not exceed 5" (127mm) in width.

Auxiliary stop is recommended at hold-open point or where a door cannot swing 180°.

Top rail less than 4 3/8" (111mm) measured from stop requires plate SC60A-18PA.



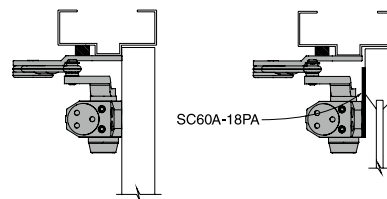
SC60A Series heavy duty (parallel)



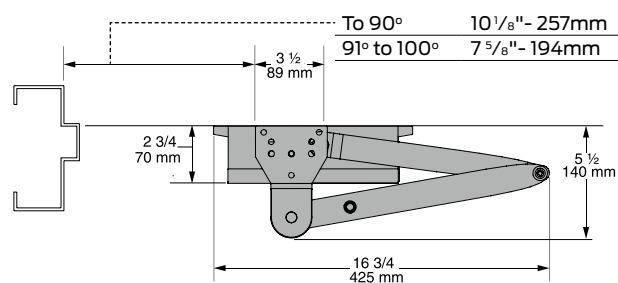
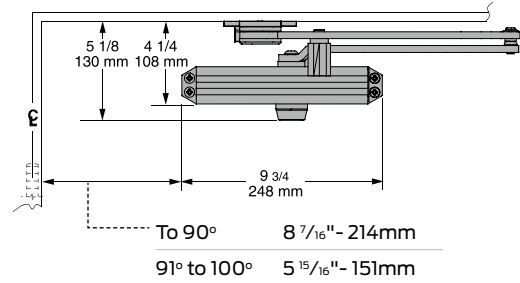
Butt hinges should not exceed 5" (127mm) in width.

Auxiliary stop is recommended at hold-open point, where a door cannot swing 180° or where Dead stop or Spring-n-stop arm is not used.

Top Rail less than 4 1/4" (108mm) measured from stop requires plate SC60A-18PA.

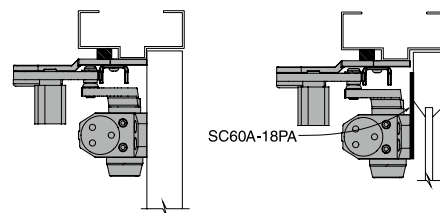


SC60A Series dead stop HO (parallel)



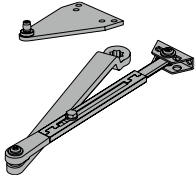
Butt hinges should not exceed 5" (127mm) in width.

Top rail less than 4 1/4" (108mm) measured from stop requires plate SC60A-18PA.

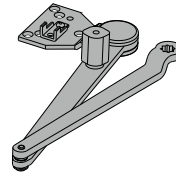


Arm types

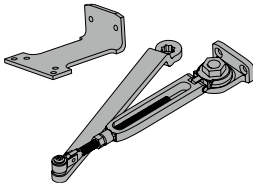
All SC60A Series closers come with standard arm and screw pack.



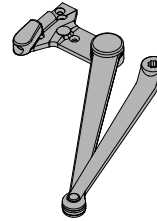
Regular arm, SC60A-3077PA
Non-handed arm with adjustable forearm assembly to accommodate a range of doors and frame reveal conditions. Mounts hinge side, top jamb or parallel arm. PA shoe included to allow installation in a parallel arm configuration.



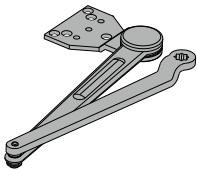
Dead stop hold-open arm, SC60A-3049DS
Optional, non-handed, stamped, heavy duty, hold-open parallel arm includes a positive mechanical stop and non-adjustable forearm assembly for high volume traffic or potentially abusive installation conditions. Also includes a manually selective hold-open function.



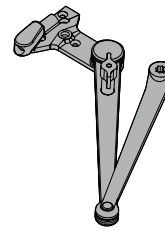
Hold-open arm, SC60A-3049PA
Optional, non-handed, hold open arm with adjustable forearm assembly to accommodate a range of doors and frame reveal conditions. Mounts hinge side, top jamb or parallel arm. PA shoe included to allow installation in a parallel arm configuration.



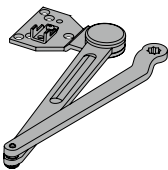
Spring-n-stop arm, SC60A-3077SS
Optional, non-handed, extra heavy-duty, forged parallel arm includes an integral spring stop and non-adjustable forearm assembly for high volume traffic or potentially abusive installation conditions.



Heavy duty regular arm, SC60A-3077HD
Optional, non-handed, stamped, heavy duty, parallel arm for use in high-traffic applications.



Spring-n-stop hold-open arm, SC60A-3049SS
Optional, non-handed, extra heavy-duty, forged parallel arm includes an integral spring stop and non-adjustable forearm assembly for high volume traffic or potentially abusive installation conditions. Also includes a manually selective hold-open function.

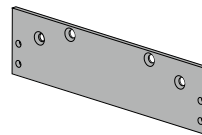


Dead stop arm, SC60A-3077DS
Optional, non-handed, stamped, heavy duty, parallel arm includes a positive mechanical stop and non-adjustable forearm assembly for high volume traffic or potentially abusive installation conditions.

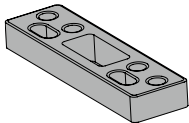
Installation accessories



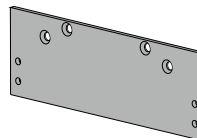
Soffit shoe support, SC60A-30
Provides anchorage for fifth screw used with soffit shoe, where reveal is less than 3 1/16" (78mm).



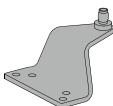
Plate, SC60A-18
Required for top jamb mounting where head frame is less than 1 3/4" (44mm).



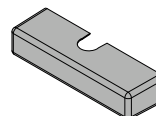
Blade stop spacer, SC60A-61
Required to lower parallel arm shoe to clear 1/2" (13mm) blade stop.



Plate, SC60A-18PA
Required for parallel arm mounting where top rail is less than 4 3/8" (111mm) for PA, 4 1/4" (108mm) for HD and DS, measured from the stop. Plate requires 2 3/8" (60mm) minimum top rail measured from stop.



Auxiliary shoe, SC60A-62A
Requires a top rail of 7" (178mm). Optional shoe replaces PA shoe for parallel arm mounting of regular arm with overhead holder/stop.



Cover, SC60A-72
Optional, non-handed, slim line plastic cover. Designed for SC60A series.

SC60A Series

		Cylinder	Cover	Arm	Finish	Accessories
STD**	SC61A Standard					
Slim cover	SC60A-72 (optional, available with SC61A only, please specify)					
RW/PA**	Regular with parallel arm shoe					
HW/PA**	Hold open with parallel arm shoe					
HD	Heavy duty arm					
DS**	Dead stop arm					
DS/HO	Dead stop hold open arm					
SS	Spring stop arm					
SS/HO	Spring stop hold open arm					
Matte black**	622					
Aluminum	689					
Dark bronze	695					
Brass	696					
Soffit shoe support	SC60A-30					
Blade stop spacer	SC60A-61					
Auxiliary shoe	SC60A-62A					
Top jamb plate	SC60A-18					
PA Plate	SC60A-18PA					
Slim cover	SC60A-72					

**Matte Black (622) is only available on standard cylinders and RW/PA, HW/PA, and DS arms.

Note: SC60A Series comes standard with less cover and all models have adjustable sizes 1-5.

Cylinder options

Standard cylinder (STD) – Standard cylinder provides a main speed function to control the motion of the door from maximum opening angle until the door is a few inches from the latch where latch function controls the final closing motion. The opening swing is controlled by the hydraulic backcheck function from about 70° to maximum opening angle.

Delayed action cylinder (DEL) – Special cylinder provides a separate adjustable delayed closing motion from maximum opening angle to approximately 70°. Then the main speed function controls the door motion until the door is a few inches from the latch where latch function controls the final closing motion. During the opening swing the door is controlled by the hydraulic backcheck function from about 70° to maximum opening angle.

Competitive cross reference

Surface closer cross reference

Falcon	SC60A	SC70A	SC80A	SC90A
Norton	*1600BC	*7500/ 7700	*8500	1700BC
Hager	*5300	5100	*5200	5400
Stanley	*D-1650	D-4550	D-3550	
Yale	*50/ 51BC/1100	*4400	3300/ *3500	5100BC
Sargent	*1130	280/350	*1330	
Corbin		DC8000	DC3000	
Dorma	7400	8900	*8600	7300/ 7200

* identical footprint to listed Falcon closer.

Concealed closer cross reference

Falcon	OHC100 Series
Dorma	RTS88
Global	TC7000
International	Series 200, Series 300, Series 500
Jackson	20-330
Kawneer	Husky II
Sentinel	30 Series