



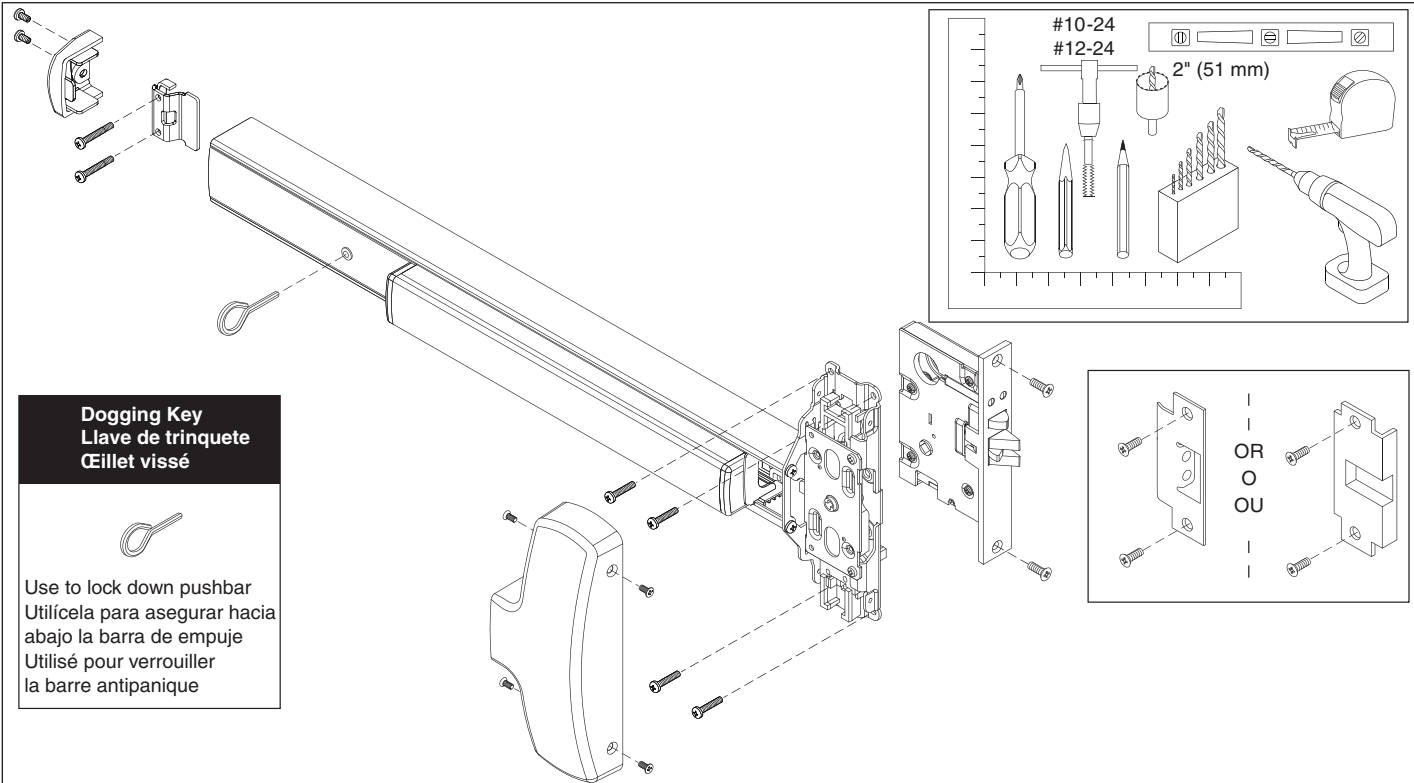
25-M & F-25-M

FALCON®


640006-00

Mortise Exit Device
Dispositivo de salida con mortaja
Appareil de sortie de la mortaise

Installation Instructions
Instrucciones de Instalación
Notice d'installation



Dogging Key
Llave de trinquete
Cillet vissé



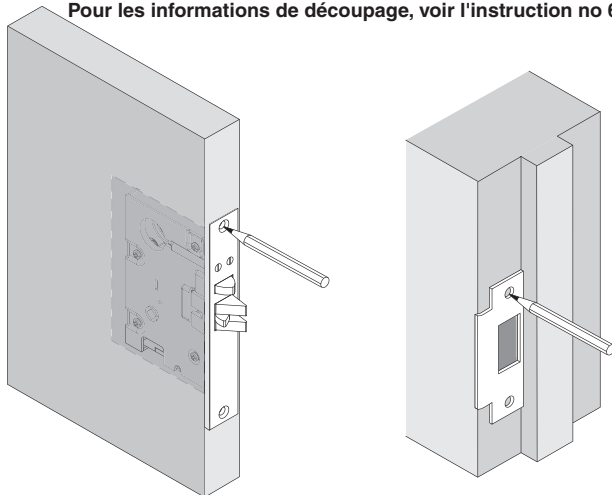
Use to lock down pushbar
Utilízela para asegurar hacia abajo la barra de empuje
Utilisé pour verrouiller la barre antipanique



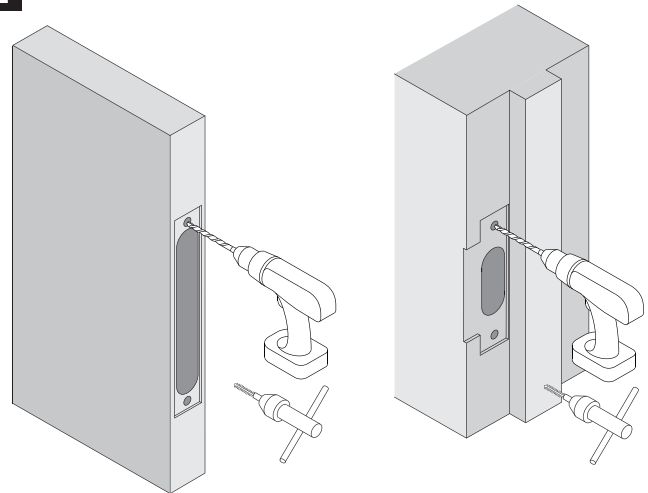
If sexbolts are in box, see Sexbolt Preparation on back page
Si los pernos macho-hembra se encuentran en la caja, consulte la preparación de pernos macho-hembra en la página posterior
Si les colonnettes sont dans la boîte, voir « Préparation de colonnette » au verso de la page

1
Mark Door For Mortise Lock and Strike
Marque la puerta para el seguro Mortise y Cerrojo
Marquer la porte pour le verrou à mortaise et le montent

For Cutout Information, see Instruction #640007
Para información de corte, consulte las instrucciones #640007
Pour les informations de découpage, voir l'instruction no 640007



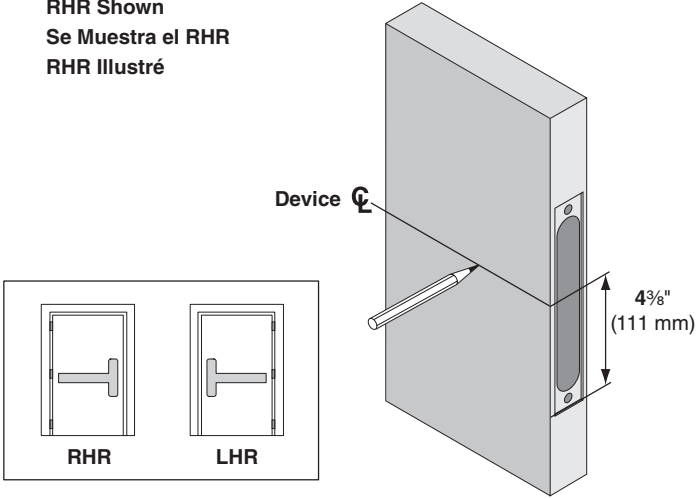
2



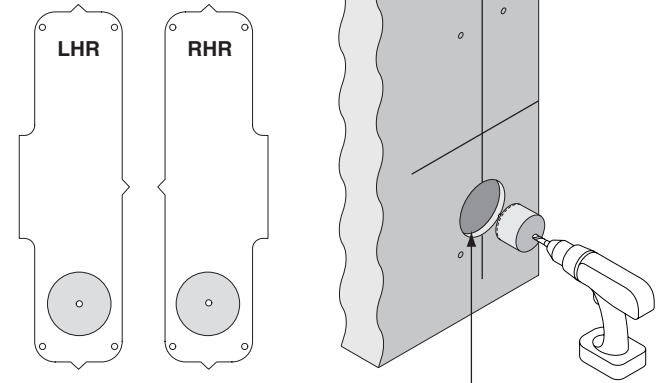
x4	Metal	Metal	Métal	OR O OU	Wood	Madera	Bois
	#16				#16		
	#12-24						

3 Mark Device Center Line (☿)
 Marque la Línea Central (☿) por Device
 Marquer la Ligne Centrale (☿) pour Device

RHR Shown
 Se Muestra el RHR
 RHR Illustré

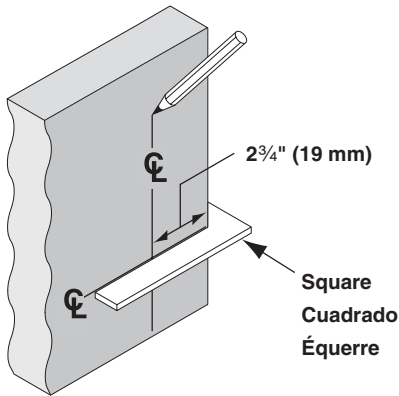


6 Cut 2" Hole
 Corte un orificio de 51 mm
 Couper un orifice de 51 mm

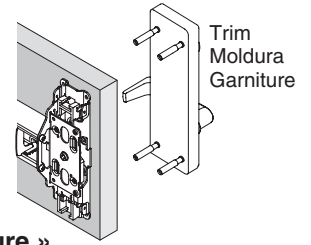


Metal	OR	Wood	Device side only
Metal	-- O --	Madera	Solamente el lado del dispositivo
Métal	OU	Bois	Côté du dispositif seulement

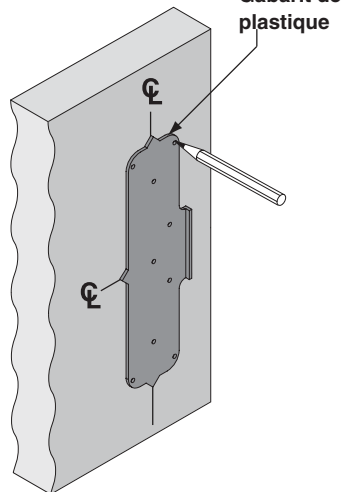
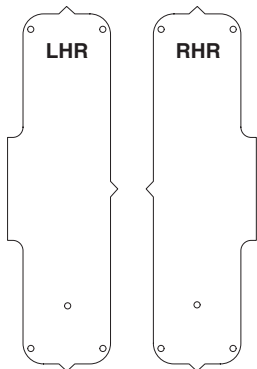
4 Mark Vertical Center Line (☿)
 Marque la línea central vertical (☿)
 Marquer l'axe vertical (☿)



7 If Installing Trim,
 Go To Trim Instructions
 Si instala la moldura,
 Vaya a las instrucciones
 de moldura
 Pour l'installation
 d'une garniture,
 voir « Instructions de garniture »

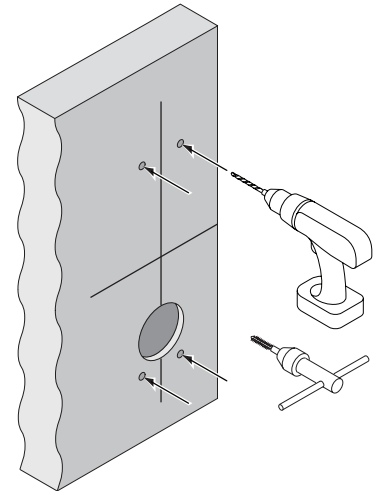


5 Mark 5 Holes
 Marque 5 orificios
 Marquer 5 orifices



8 Prepare 4 Holes*
 Prepare 4 orificios*
 Préparer 4 orifices*

Metal	Metal	Métal
#25		
#10-24		
--- OR O OU ---		
Wood	Madera	Bois
1/8" (3 mm) X 1" (25 mm)		



*If using trim, holes may have been drilled already
 *Si se utiliza una moldura los orificios ya tienen que estar perforados
 *Pour l'utilisation d'une garniture, les orifices peuvent être déjà percés

9 Install Mortise Lock and Strike
 Instale el seguro Mortise y el Cerrojo
 Installer le verrou à mortaise et la gâche

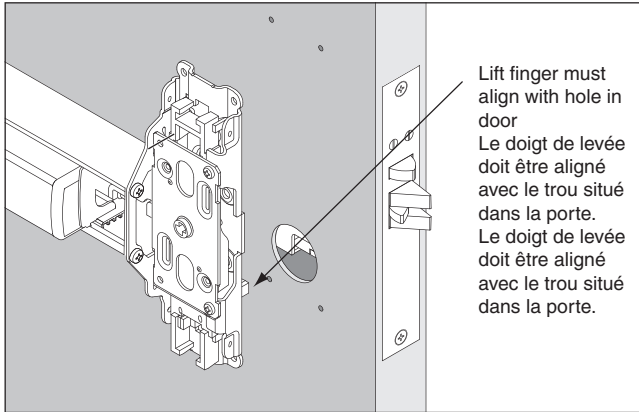
See Mortise Lock Instructions
 Consulte las instrucciones del seguro Mortise
 Voir « Instructions pour verrou à mortaise »

10 Verify that Handing of Device Matches Door
 Assurez-vous que le dispositif de remise est coordonné avec la porte.
 Verifique que el manejo del dispositivo corresponda con la puerta.



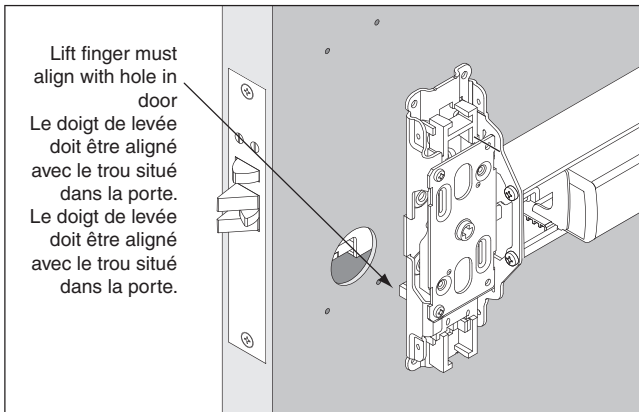
This product is factory handed. If you have received the wrong handing, a replacement must be ordered.
 Ce produit est fabriqué en usine. Si vous avez reçu la mauvaise remise, un remplacement doit être commandé.
 Este producto se determina de fábrica. Si recibió el diseño equivocado, debe solicitar su sustitución.

RHR



Lift finger must align with hole in door
 Le doigt de levée doit être aligné avec le trou situé dans la porte.
 Le doigt de levée doit être aligné avec le trou situé dans la porte.

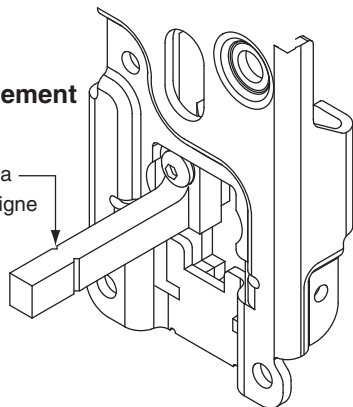
LHR



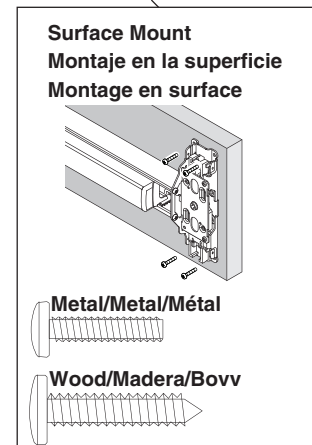
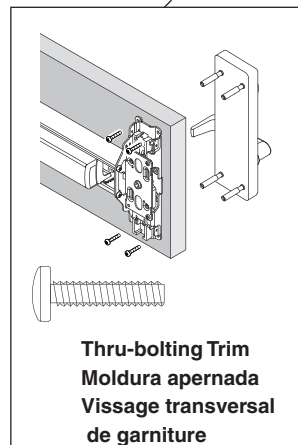
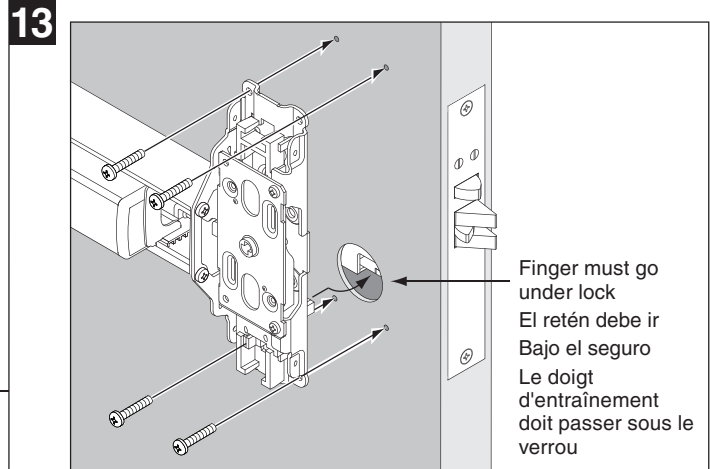
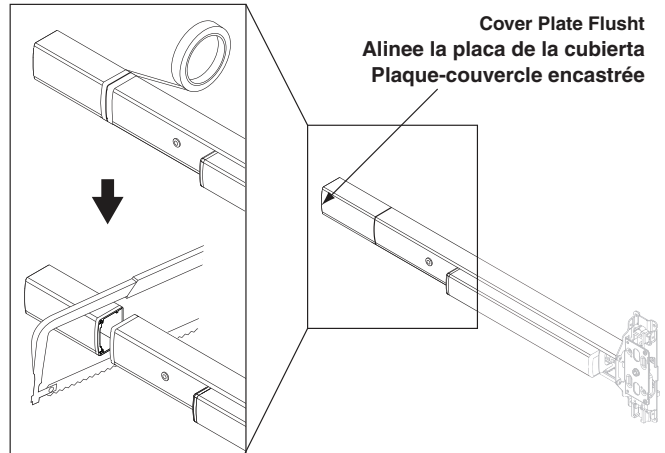
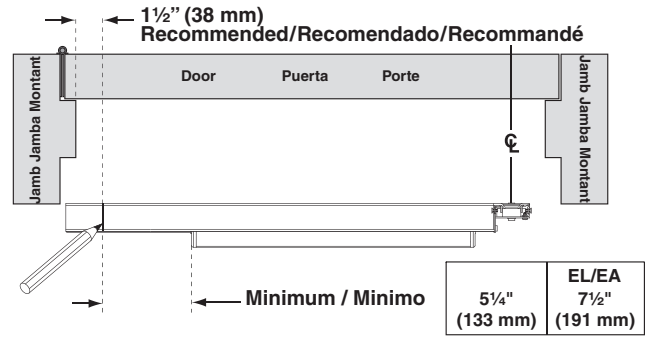
Lift finger must align with hole in door
 Le doigt de levée doit être aligné avec le trou situé dans la porte.
 Le doigt de levée doit être aligné avec le trou situé dans la porte.

11 If 1 3/4" Door, Cut Lift Finger
 Si 44 mm Puerta, corte el retén de elevación
 Si porte de 44 mm po, couper le doigt d'entraînement

Cut on line
 Corte en línea
 Couper à la ligne

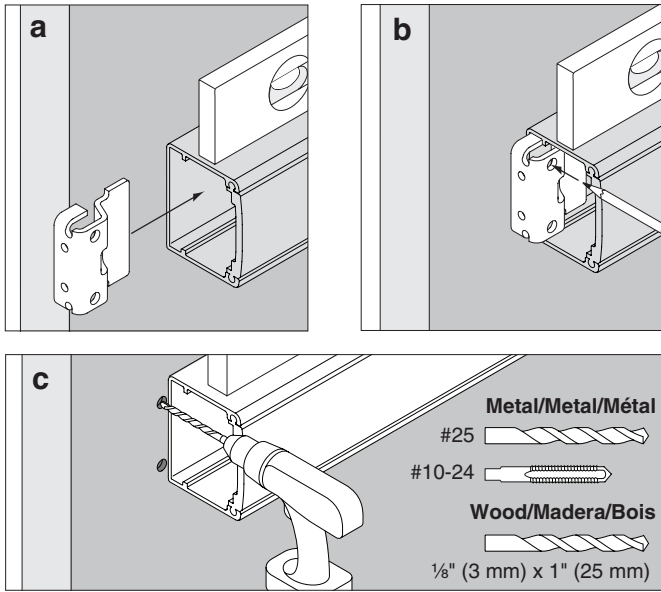


12 If Necessary, Cut Device
 Si Necesario, Corte la Aparato
 Si Nécessaire, Couper le l'Appareil



14

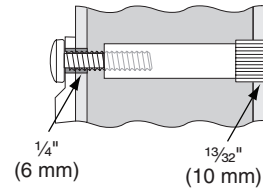
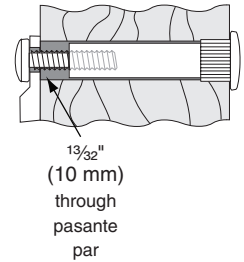
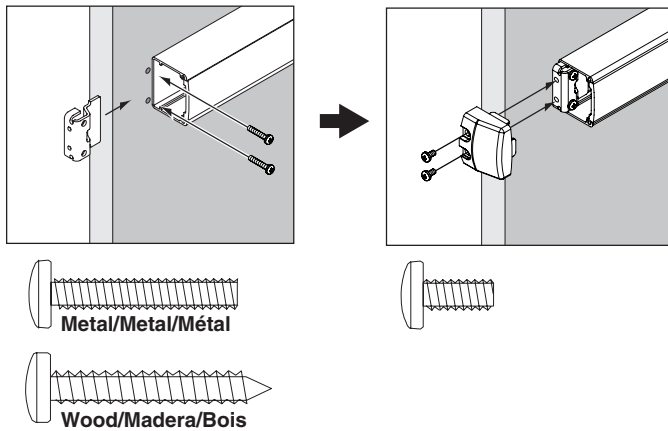
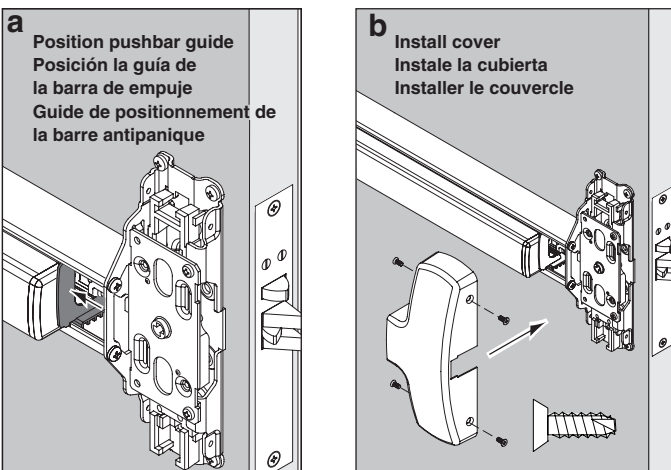
Mark and Prepare 2 Holes
Marque y prepare 2 orificios
Marquer et préparer 2 orifices

**Sexbolt****Preparación de****Préparation de****Preparation pernos macho-hembra la columnette**

If sexbolts are in box, during steps 8 and 14 prepare holes and install them as shown below

Si los pernos macho-hembra se encuentran en la caja, durante los pasos 8 y 14 prepare los orificios

Si les colonnettes sont dans la boîte, préparer les orifices à l'étape 8 et 14

Metal/Metal/MétalOR
O
OU**Wood/Madera/Bois****15****16**

Customer Service Servicio al cliente Service à la clientèle

1-877-671-7011

www.allegion.com/us



© Allegion 2014
 Printed in U.S.A.
 640006-00 Rev. 01/14-d



941367-00

MEL 24/25 Series

FALCON®

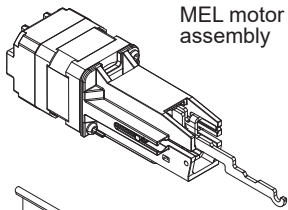
Motorized Electric Latch Retraction

Installation Instructions

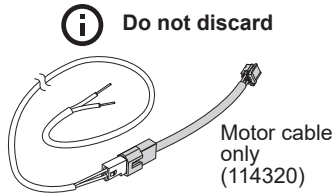


These instructions are for MEL conversion kits or MEL devices with preinstalled motors.

Parts



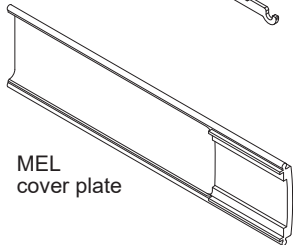
MEL motor assembly



Do not discard

Motor cable only (114320)

MEL 6' cable with motor cable (47269206)



MEL cover plate

MEL motor mounting 4-20 x 1/4" FHP screws (qty 2)

Allegion Connect accessories available to order

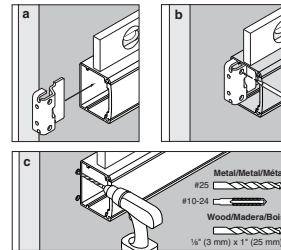
- 106198 MEL-CON adapter cable with 8-pin connector
- 040069 MEL motor cable + MEL-CON adapter cable with 8-pin connector



If MEL is preinstalled in the device:

- A. Follow original device instruction up to the point where this end mounting bracket step has been completed.

Mark and Prepare 2 Holes

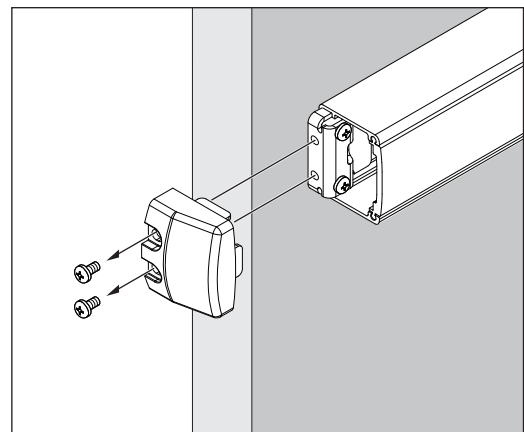


- B. Complete MEL wiring per steps 15-21 of this instruction.
- C. Return to original device instruction at point you left off, and complete installation.

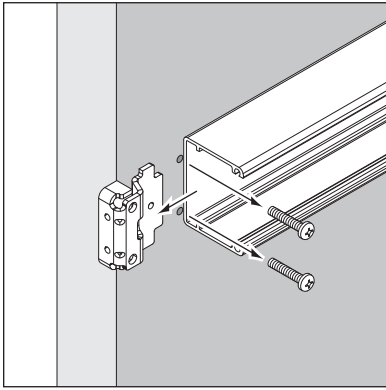


If installing the MEL conversion kit, follow the instruction steps as written.

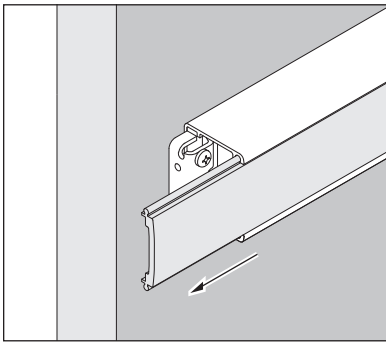
1 Remove end cap



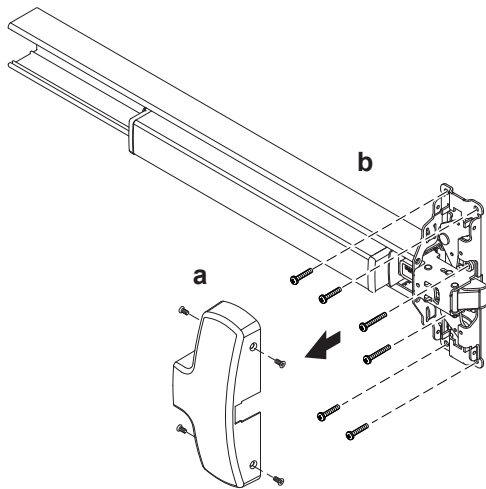
2 Remove device end mounting bracket from door



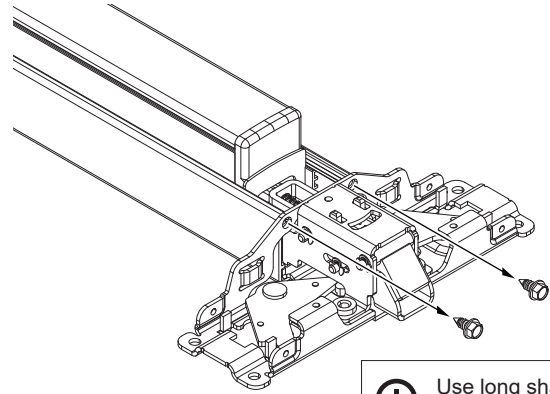
3 Slide back, remove and discard old cover plate



4 Remove center case cover and device from door



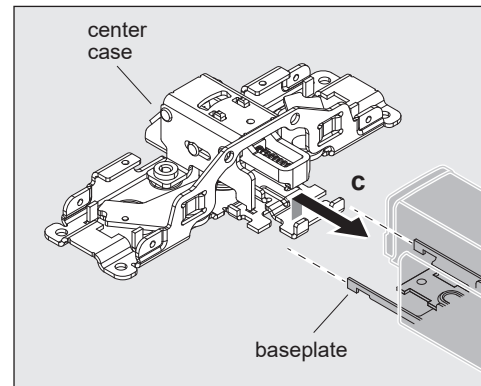
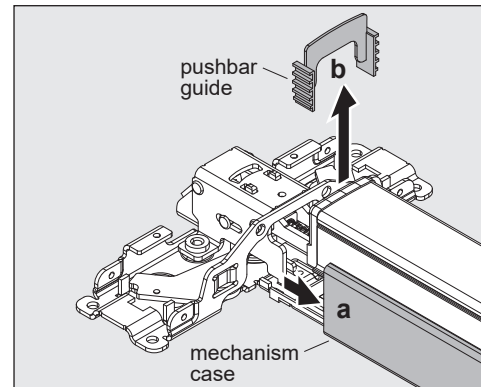
5 With device laying on a table or bench, remove the 2 screws that connect mechanism case to center case



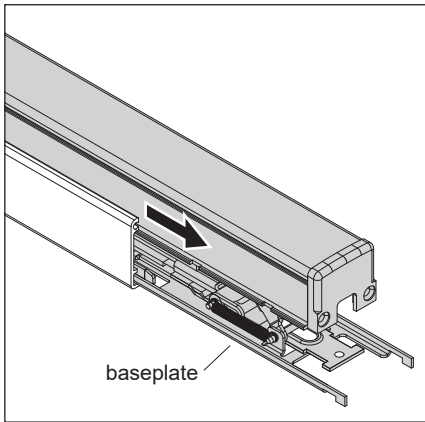
i Use long shank screwdriver.

6 Unhook baseplate from center case

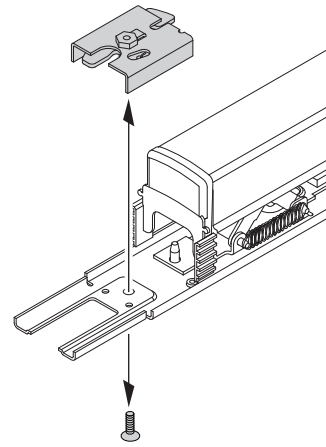
- a. Slide back mechanism case about 2" to access hooking parts.
- b. Push bar guides will come loose and will need to be reinstalled later.
- c. Unhook baseplate from center case.



7 Slide baseplate out of mechanism case

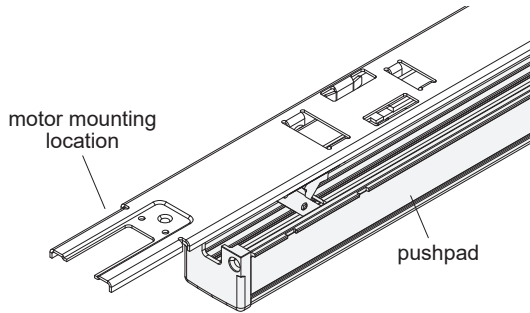


8 Remove any existing dogging assembly

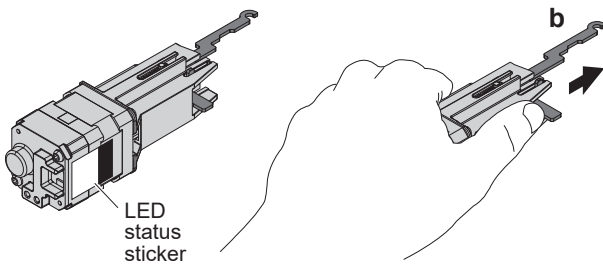


9 Secure motor assembly

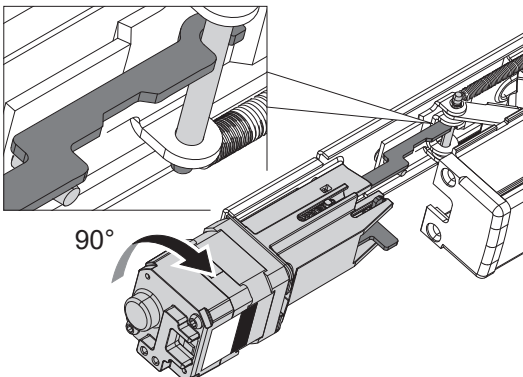
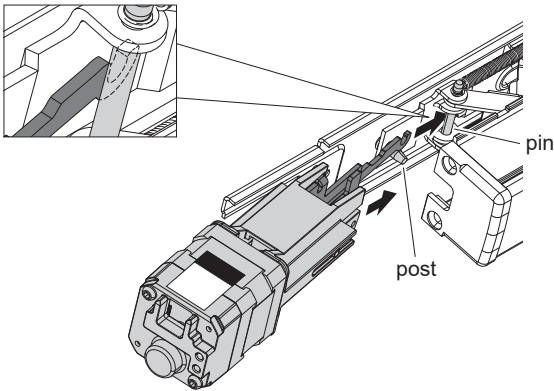
- a. Turn baseplate assembly upside down so pushpad is resting on a flat surface and motor mounting location is on the left.



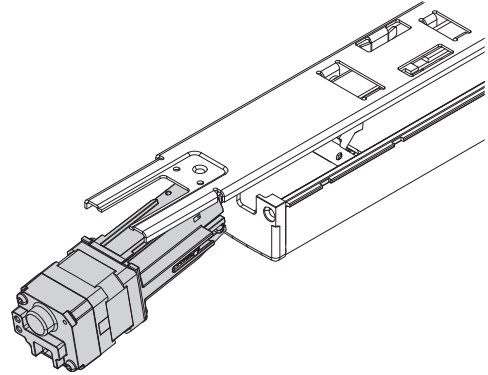
- b. Place motor in left hand with LED status sticker facing toward you. Gently extend silver hook arm outward (about 1/2") until you meet some resistance, then hold.



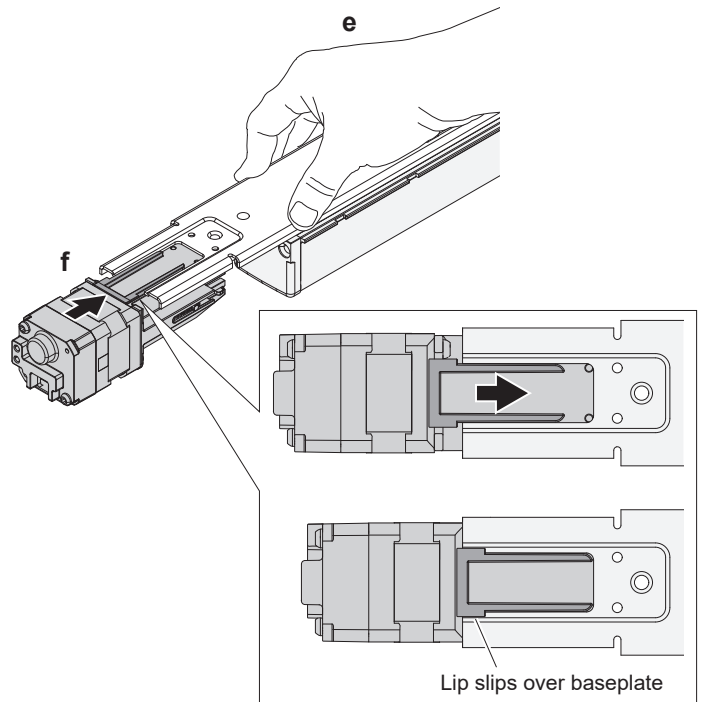
- c. While tilting baseplate assembly away from you slightly, move extended hook arm into position under baseplate. A post will be hanging down from baseplate; the hook arm should sit on the near side of that post. Rotate the motor assembly to hook the arm over the baseplate axle pin that is closest to the baseplate. Do not pull out on motor at this step.



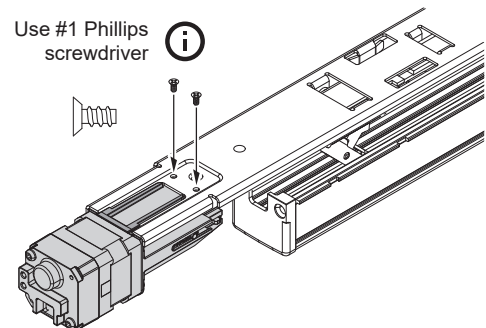
- d. Set motor on flat surface.



- e. Push down firmly on baseplate so it bottoms out against push pad.
- f. While depressing baseplate, lift up motor assembly and guide it along elongated baseplate slot until motor lip slips over baseplate.



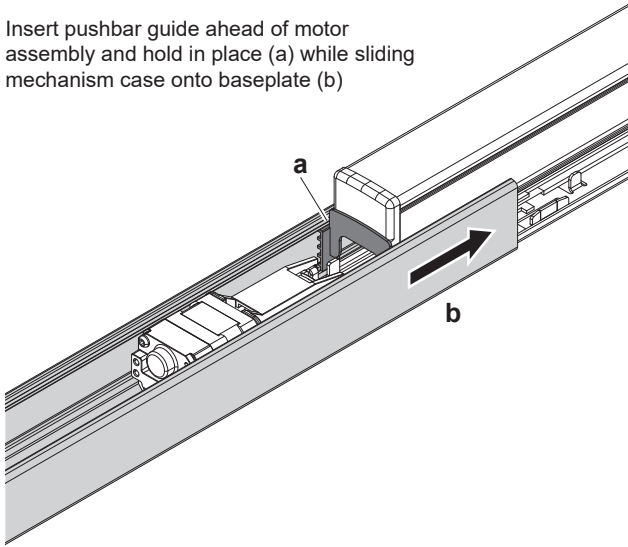
- g. Release baseplate. Secure motor assembly with 2 small self-tapping screws (provided).



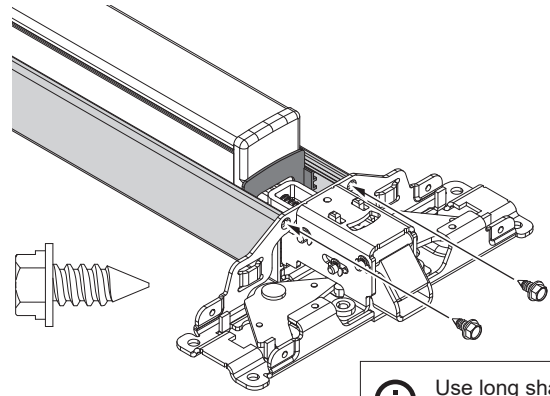
- h. Turn baseplate and motor assembly right side up.

10 Slide mechanism case onto baseplate

Insert pushbar guide ahead of motor assembly and hold in place (a) while sliding mechanism case onto baseplate (b)

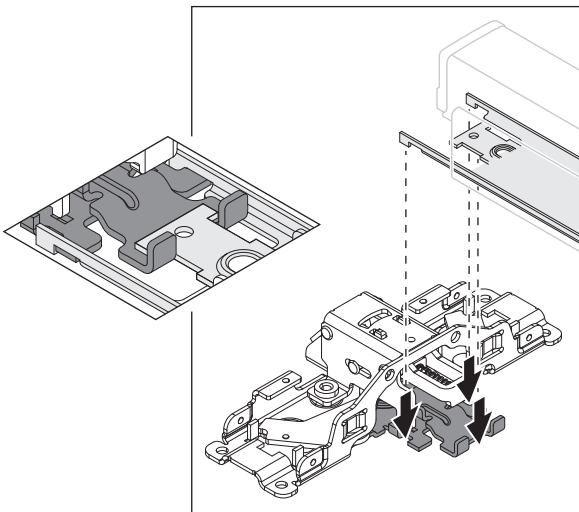


13 Reattach mechanism case to center case

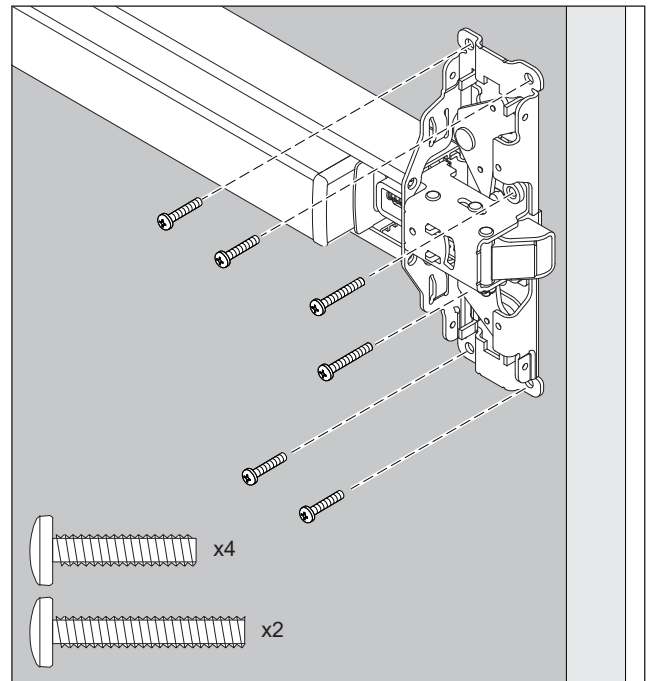


i Use long shank screwdriver.

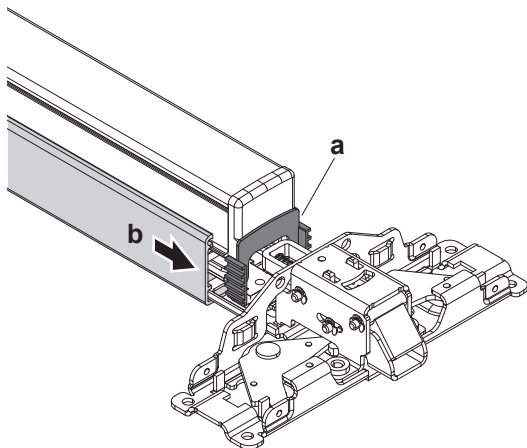
11 Reconnect center case to baseplate via hooking parts



14 Reattach device to door



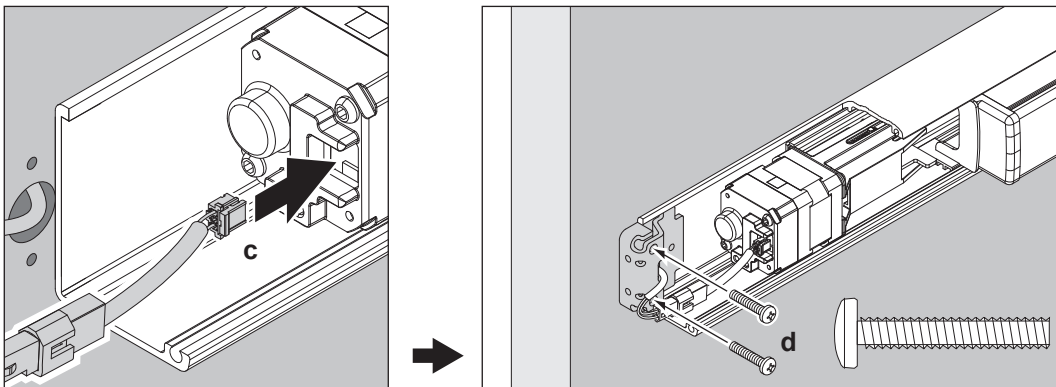
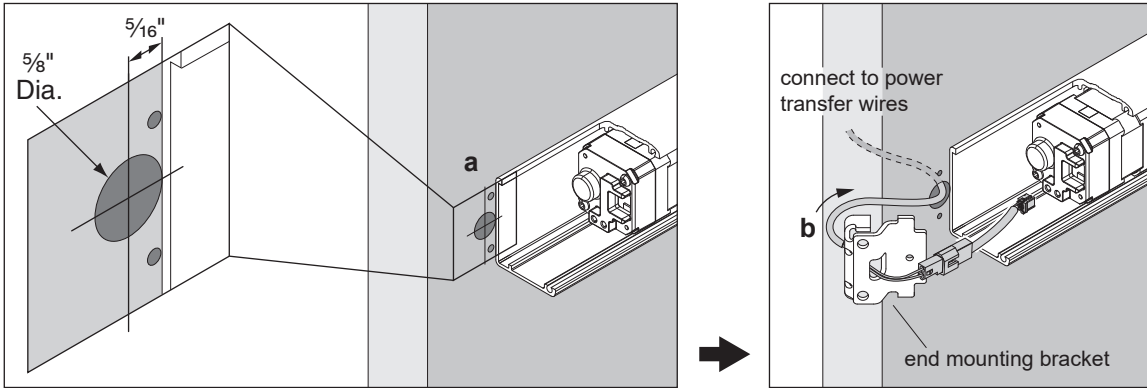
12 Insert remaining pushbar guide (nearest the center case) and slide mechanism case against center case



15 Complete wiring

i If not wiring at this time, **DO NOT DISCARD CABLE!**
 After installing device or conversion kit, if there is room, store the cable inside the mechanism case until the electrical wiring occurs. Otherwise, store the cable in a designated location.

- Drill wire access hole.
- Route furnished 6' MEL two-piece cable thru device end mounting bracket to connect MEL device to power transfer wires.
- Plug cable connector into MEL motor.
- Reinstall end mounting bracket.
- Refer to table below to route proper gauge wires (from electric hinge, EPT, or door loop) to PS900-Series power supply.



PS900-Series power supply with 900-Series option board(s) installed

Distance (one way)	Wire Gauge
200'	18AWG
320'	16AWG
500'	14AWG
800'	12AWG

MEL Electrical Load
 Voltage: 24 VDC
 Current: 1.0 A inrush (0.5 sec)
 0.14 A holding

i Power wires to MEL are not polarized.

electric hinge shown (an EPT or door loop may also be used)

MEL exit device

e

⚠ WARNING

To avoid risk of electric shock, turn off AC power to power supply before installing or wiring option board.

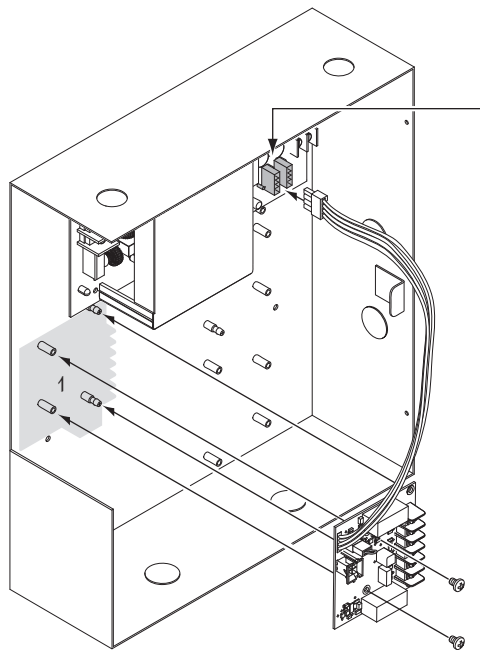
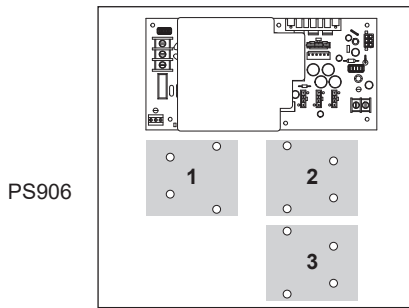
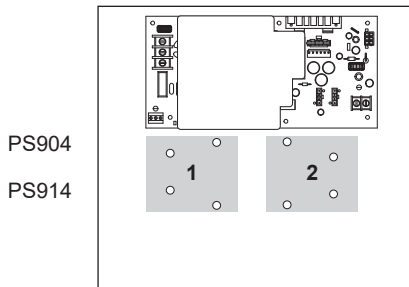
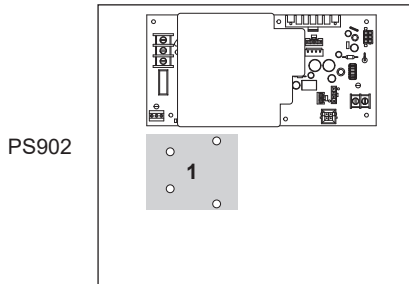
16 Confirm equipment compatibility

MEL is compatible with the following equipment (refer to individual instructions as needed):

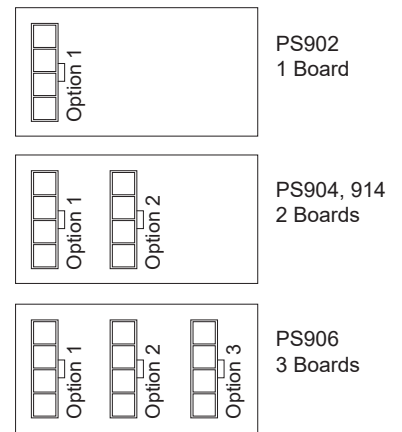
- PS900-Series power supplies - PS902, PS904, PS906, PS914
- 900-Series option boards - 900-2RS, 900-4R, 900-4RL

17 Install 900-2RS, 4R, or 4RL option board(s) into power supply

a Review Available 900 series Option Board Mounting Locations (Gray)



b Plug Option Board Cable into any Available Option Connector



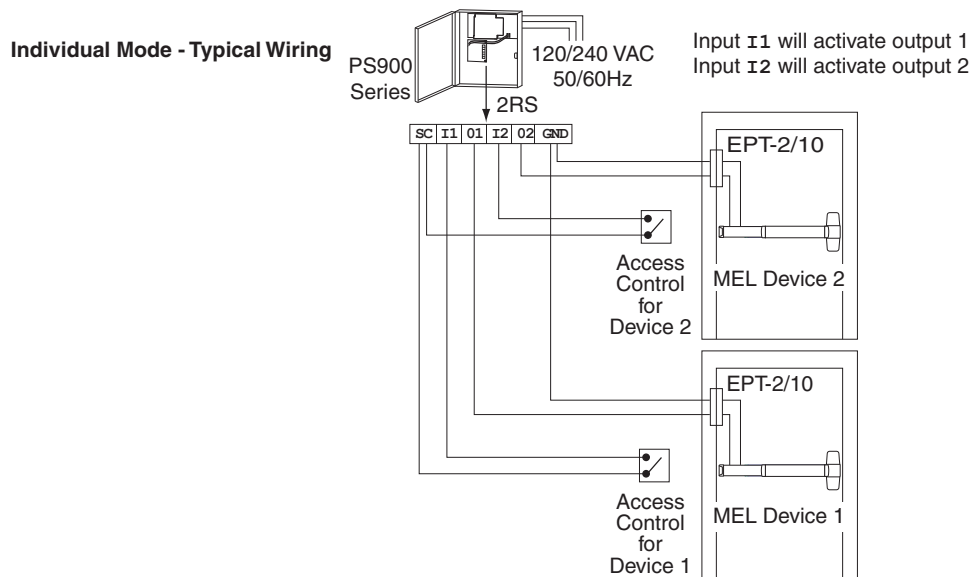
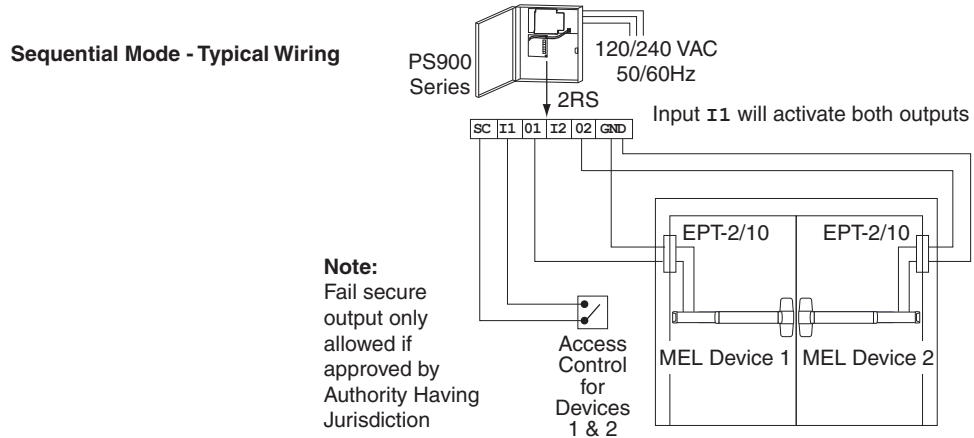
c Secure Board(s) with Screws

⚠ WARNING

Fire alarm (FA) option board required if MEL is installed in fire exit hardware.

- Notes:**
1. 24 VDC output setting required when MEL device connected.
 2. If installing board in location 2 or 3, rotate board 180°.
 3. Latchbolt retraction of (2) sequenced MEL devices requires more than 1 second to complete.
 4. When powering multiple components, verify that the amperage requirements of all components combined does not exceed the power supply output rating.

18 Connect input and output wires to option board (2RS shown)



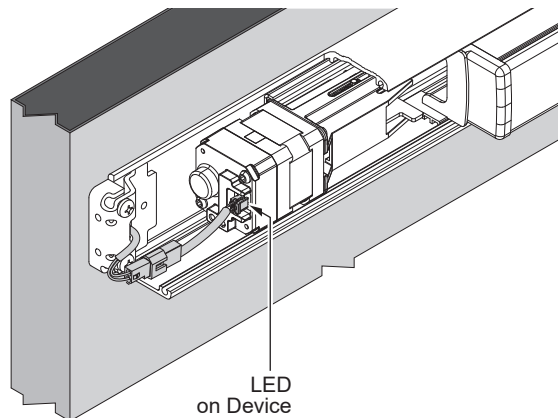
19 Check operation

- a. Activate each input and verify all MEL devices operate properly.
- b. If any device does not operate properly, see next page for troubleshooting.

20 If necessary, troubleshoot operation (LED is only visible with the mechanism case removed)

Power at the MEL	MEL Response	Condition/Solution
24 VDC	LED - solid green Latchbolt - retracted	Operation normal, latch retracted immediately
	LED - solid red after latchbolt attempts to retract multiple times	Latchbolt cannot fully retract mechanically Remove power. Depress pushbar and make sure latchbolt retracts and extends fully. If necessary, disconnect any vertical rods or mortise lock from device center case, and reapply power. If motor holds, mechanical adjustments may be required per the device instructions.*
	LED - flashing green/red Latchbolt - not retracted	Excessive tamper (while power applied, the pushpad was pulled out at least 3 times) Wait 15 seconds and latchbolt will retract again OR remove and reapply power to clear condition.
24 VDC low	LED - flashing green Latchbolt - retracted	Voltage low during latchbolt retraction (latchbolt retracts at reduced force) Wire length is too long, wire gauge is too small, or power supply has poor regulation.
29 VDC or greater		Input voltage is too high for proper operation Wrong power supply, power supply defective.
13 VDC or lower	LED- flashing red Latchbolt - will not retract	Input voltage is too low for proper operation Wrong power supply, power supply defective or not set to the proper output voltage. To set, remove AC power from power supply, change power supply setting from 12 to 24 VDC, then reapply AC power and verify proper operation.
0 VDC	LED - off Latchbolt - not retracted	No input voltage Problem with the power supply, control switch, or wiring.

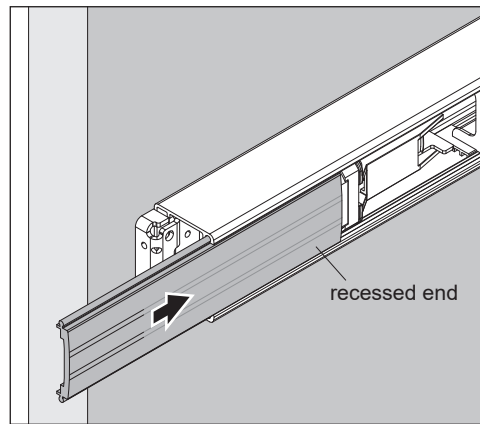
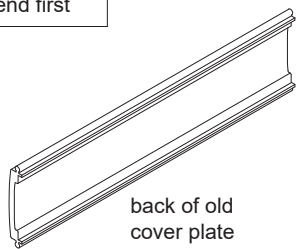
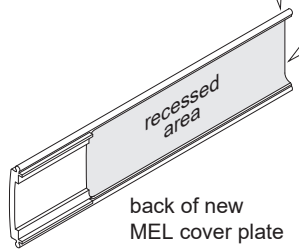
**For information about adjusting exit devices, you can find their installation instructions in the support area at www.allegion.com/us or call Technical Services at 1-877-671-7011*



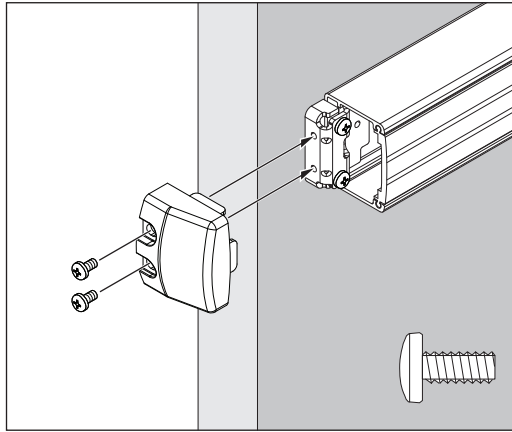
21 Install MEL cover plate

i Do **not** cut from recessed end of cover plate

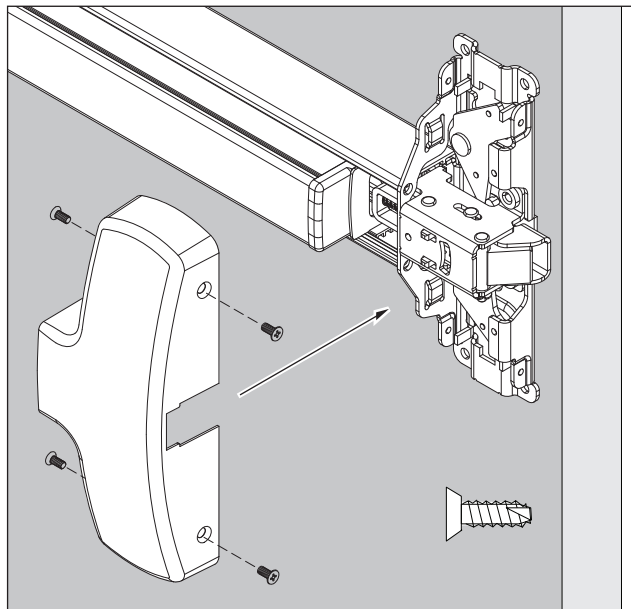
i Install this end first



22 Reinstall end cap



23 Reinstall center case cover

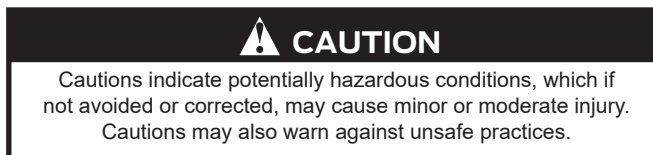


Warnings and Cautions

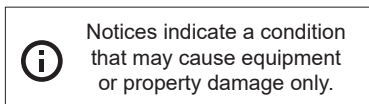
Warnings look like this:



Cautions look like this:



Notices look like this:



Directions look like this:

