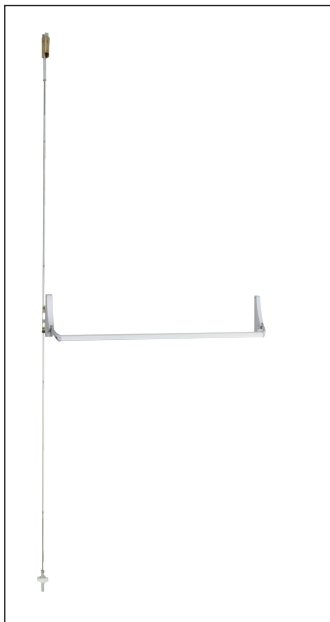


1990 Series

Concealed vertical rod crossbar device

Tough crossbar design.

The classic look of 1990 has a long history of reliable performance. It is equipped with hardened steel latches and adjustable strike to ensure safety, security and quiet operation.

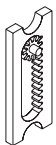


Specifications

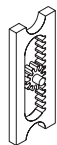
Hand:	Field reversible, non handed.
Functions:	See trim selection chart on this page.
Finishes:	P28, P13, P35, US26D.
Strikes:	PB48 top.
Latches:	Hex bottom latch (standard), RL - rod bottom latch, PL - Pullman bottom latch, ES - electric strike top latch (optional). Device needs to be less bottom rod (LBR).
Dogging feature:	Hex dogging standard.
Cylinder:	Rim, key entry (NL) or hold back (HB) available (field selectable)
Sizes:	Field adjustable width, 41" crossbar standard extra length cross bar available.
Doors:	1 3/4" thick metal doors.
Projections:	4 3/8" extended, 2 1/2" depressed.
Stile:	1 3/4" minimum.
Fasteners:	All mounting screws are concealed.
ANSI:	Certified ANSI A156.3 grade 1 standards.
UL:	UL305 listed.
Vertical rods:	7' standard, extension rod kits available up to 10'.

Positioning retractor as shown for NL or HB functions.

Install retractor as shown below for both RHR and LHR doors; this makes all keys function in the same direction.



Hold back (HB)



Night latch (NL)

Model	Trim Package	Type	Function
1990	No outside trim	6	01
1991	Pull only (9970)	6	02
1992	Cylinder only	6	03/04
1993	Pull and cylinder	6	02/03/04

Accessories

Strikes

Concealed vertical rod



PB48

Top strike for 1990 devices.
Packed with three 0.050" thick shims.
1 1/16" square
7/16" projection

Rim



STK45

Strike for inactive leaf,
pair of doors with
2090 devices.
3 1/4" tall
1 5/16" wide
1/4" thick



SD35

Strike for 1/8" x 1/2"
blade stop, 2090
device.
1 3/4" tall
1 3/4" wide
1/2" thick



SD36

Strike for all stops,
2090 device.
1 3/4" tall
1 3/4" wide
1/2" thick

Pull



9970

Can be used with all
devices.
9 1/4" center to center
2 7/8" projection
1 3/4" clearance

Cylinders

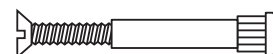
- Cylinders for XX-R and XX-V Series devices with cylinder operation are rim cylinders with either horizontal or vertical tailpiece.
- Cylinders for XX-C and, XX-M and Series devices are mortise cylinders with standard thread (1 5/32" - 32). The standard cams furnished with most manufacturers mortise cylinders will operate mortise locks, as well as concealed Delta trim operators for XX-C devices. (Cams measure approximately 1" overall and 5/16" wide at tip.) Exception: Concealed C & NL require cam B250-295.
- Cylinder supplied only when specified.
- 1 1/4" long with standard cam and "G" keyway only.
On Delta C trim for vertical and concealed vertical C and NL functions 1 1/8" - 1 1/4" long cylinder by blocking ring required with cam B250-295.
- Cylinders available keyed and keyed different.
- XX-M devices using 811K, 812L or 816L trim require a 1 1/2" cylinder.

Sex Bolts

Sex bolts are available in lengths (under the head) of 12 1/32". Screws to fit are available in 3/4" and 2" lengths to cover a wide range of door thicknesses.

B-2729 (#10-24 Thread)

B-4122 (1/4-20 Thread)



How to order

1990/2090

		1990	DT	P28	PL*	RHR†
1990	See model numbers on page 12					
2090	See model numbers on page 13					
EO	Exit only					
DT	Dummy trim - 9970 pull					
NL-HBOP	Rim cylinder					
NLHB-P	Rim cylinder with 9970 pull					
P28	P35					
P13	US26D					
HEX	Standard bottomlatch					
RL	Rod bottom latch					
PL	Pullman bottomlatch					
ES	Top latch for use with electric strike					
LBR	Less bottom rods					
RHR	RHR					
LHR	LHR					

Note: Crossbar furnished 41" standard. Extra length crossbar 48" is available.

* Applies to 1990 only

† Applies to 2090 only