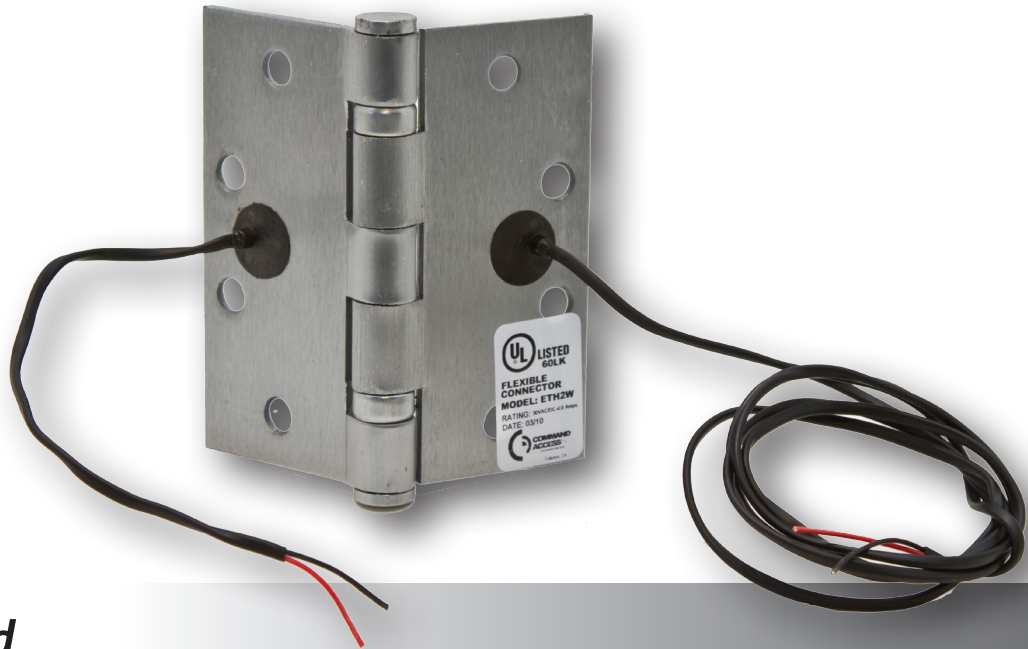


## ***ENERGY TRANSFER HINGES***



- ***UL-F Rated***
- ***4' Lead available at no charge***
- ***Center located wire access hole***
- ***Non-conductive wire access cap for added protection***
- ***3-Year Warranty***

## **Quality, selection & pricing second to none**

The **Energy Transfer Hinge (ETH)** is the ideal way to pass low voltage power from the hinge jamb to the lockset without having any exposed wires. These hinges are commonly used with electric mortise & cylindrical locks, electric strikes (when on a pair of doors), electric exit trims, latch pullback devices, door mounted card readers and low voltage door lights. We can modify almost any hinge and we maintain a large inventory of most major hinge brands in various sizes and finishes. Contact us if what you need is not listed.

**Configurations Available:** *Molex Connectors available*

- ETH2W - 2 Wire (20 gauge) - 4A@24V (per pair)
- ETH4W - 4 Wire (26 gauge) - 1A@24V (per pair)
- ETH6W - 6 Wire (26 gauge) - 1A@24V (per pair)
- ETH8W - 8 Wire (28 gauge) - 1A@24V (per pair)
- ETH10W - 10 Wire (28 gauge) - 1A@24V (per pair)
- ETH12W - 12 Wire (28 gauge) - 1A@24V (per pair)

**Configurations Available for Electric Latch Retraction:** *Molex Connectors not available with heavy gauge wires*

- ETH2WH - 2 Wire (18 gauge)
- ETH4WH - 2 Wire (18 gauge) + 2 Wire (26 gauge)
- ETH6WH - 2 Wire (18 gauge) + 4 Wire (28 gauge)
- ETH8WH - 2 Wire (20 gauge) + 6 Wire (28 gauge)
- ETH10WH - 2 Wire (20 gauge) + 8 Wire (28 gauge)
- ETH12WH - 2 Wire (20 gauge) + 10 Wire (28 gauge)

**Notes:**

Not all configurations are available on all hinge sizes.

All hinges are made to Command Access standardized templating unless otherwise requested.



**U.S. Customer Support**  
**1-888-622-2377**

*Visit our website for more details*

**Canada Customer Support**  
**1-855-823-3002**

Model No.	Notes:		
Customer:	Job No./Name:	Date:	Provided by: